



Rural Close, Hornchurch, RM11 1FH

£1,600 PCM (per calendar month) PCM
Holding Deposit equal to 1 weeks rent
Tenancy Deposit equal to 5 weeks rent
Council Tax Band: D



Available immediately is this recently refurbished two bedroom house the accommodation includes, entrance hall, reception room, kitchen/diner, two double bedrooms both with fitted wardrobes and bathroom, externally there are front and rear gardens.



Entrance Hall
Entrance door, laminate flooring.

Reception Room
14'2 x 11'8 (4.32m x 3.56m)
Double glazed window to front, stairs to first floor, radiator, laminate flooring.

Kitchen/Diner
11'7 x 9'7 (3.53m x 2.92m)
Double glazed window to rear, part double glazed door to rear, wall and base units, gas hob, oven, extractor, stainless steel single drainer sink, plumbing for washing machine, radiator, cupboard, part tiled walls, laminate flooring.

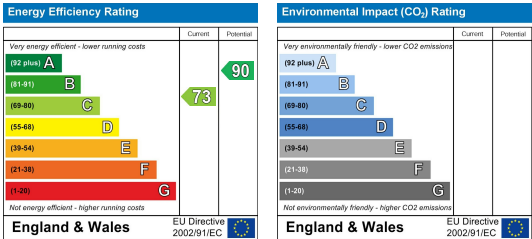
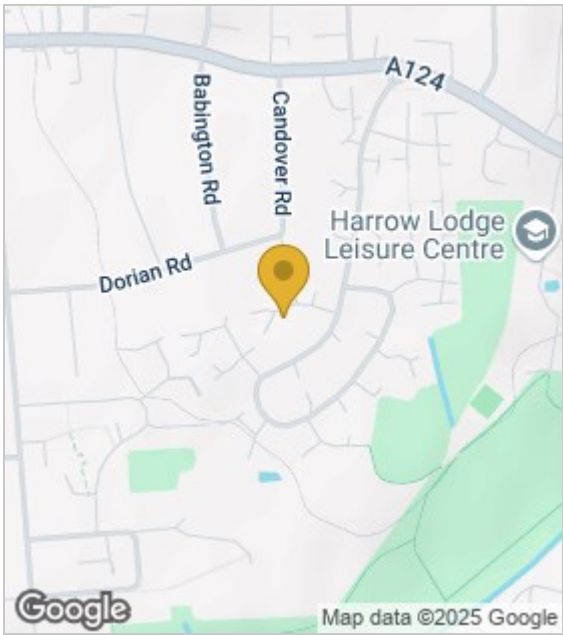
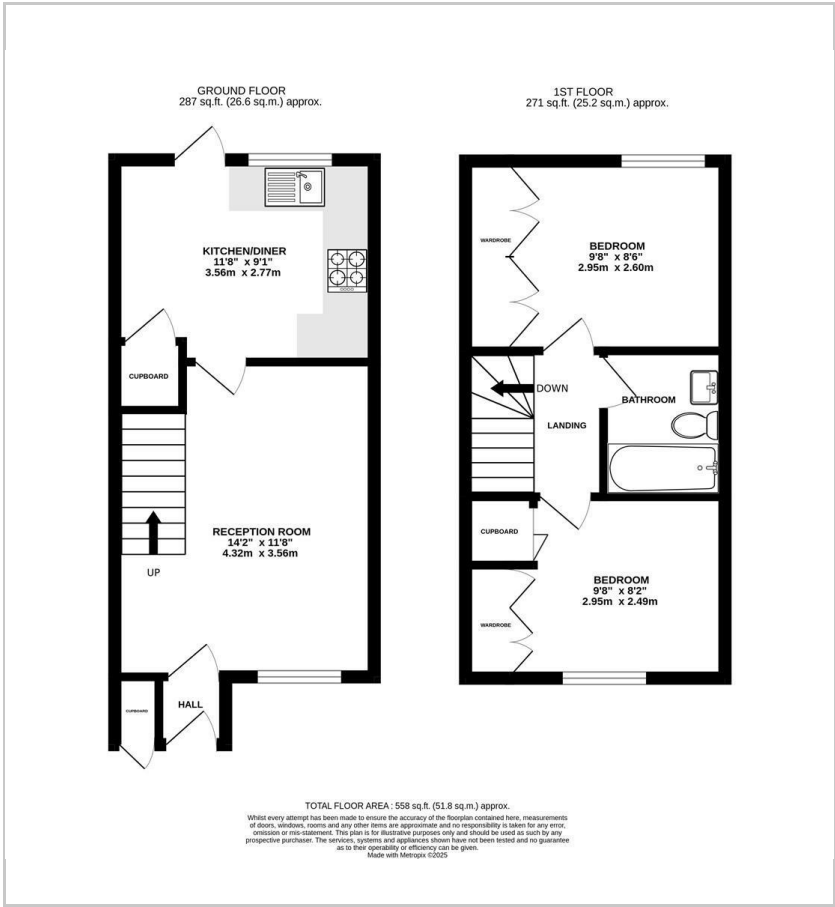
Landing
Loft access, carpet.

Bedroom One
9'5 x 8'5 (2.87m x 2.57m)
Double glazed window to rear, fitted wardrobes, radiator, carpet.

Bedroom Two
8'9 x 8'2 (2.67m x 2.49m)
Double glazed window to front, fitted wardrobes, cupboard, radiator, laminate flooring.

Bathroom
Low level WC, vanity wash hand basin, panelled bath, extractor, radiator, vinyl flooring.

Garden
50' (15.24m)



These particulars, whilst believed to be accurate are set out as a general outline only for guidance and do not constitute any part of an offer or contract. Interested parties should not rely on them as statements of representation of fact, but must satisfy themselves by inspection or otherwise as to their accuracy. No person in this firms employment has the authority to make or give any representation or warranty in respect of the property.