



**Fyfield Close, West Horndon,
Brentwood, CM13 3NQ**

Guide Price £500,000 - £525,000: A much improved and extended three bedroom semi detached bungalow, the accommodation includes, entrance hall, lounge and dining room, kitchen/breakfast room, three bedrooms two with fitted wardrobes and bathroom. Externally there is a driveway and garage and a 70 ft rear garden.

Guide Price £500,000 - £525,000 - Freehold - Council Tax: D

Fyfield Close, West Horndon, Brentwood, CM13 3NQ



Entrance Hall

Entrance door, loft access, radiator with cover, coved ceiling, tiled flooring.

Lounge

14'6 x 11'10 (4.42m x 3.61m)

Sliding doors to dining room, gas fire, radiator, coved ceiling, carpet.

Dining Room

12'3 x 8'11 (3.73m x 2.72m)

Double glazed French doors to rear, radiator, coved ceiling, tiled flooring.

Kitchen/Breakfast Room

20' x 9'4 narrowing to 8'3 (6.10m x 2.84m narrowing to 2.51m)

Double glazed window to rear, double glazed door to side, wall and base units, single drainer sink, electric hob, oven, extractor, plumbing for washing machine and dishwasher, radiator, coved ceiling, tiled flooring.

Bedroom One

12'8 x 11'1 (3.86m x 3.38m)

Double glazed window to front, range of fitted bedroom furniture, radiator with cover, coved ceiling, carpet.

Bedroom Two

13'4 x 10'6 (4.06m x 3.20m)

Double glazed bay window to front, range

of fitted bedroom furniture, radiator, coved ceiling, carpet.

Bedroom Three

9'1 x 6'11 (2.77m x 2.11m)

Double glazed window to side., radiator, coved ceiling, carpet.

Bathroom

9'6 x 5'7 (2.90m x 1.70m)

Frosted double glazed window to side, low level WC, pedestal wash hand basin, roll top bath radiator, vinyl flooring.

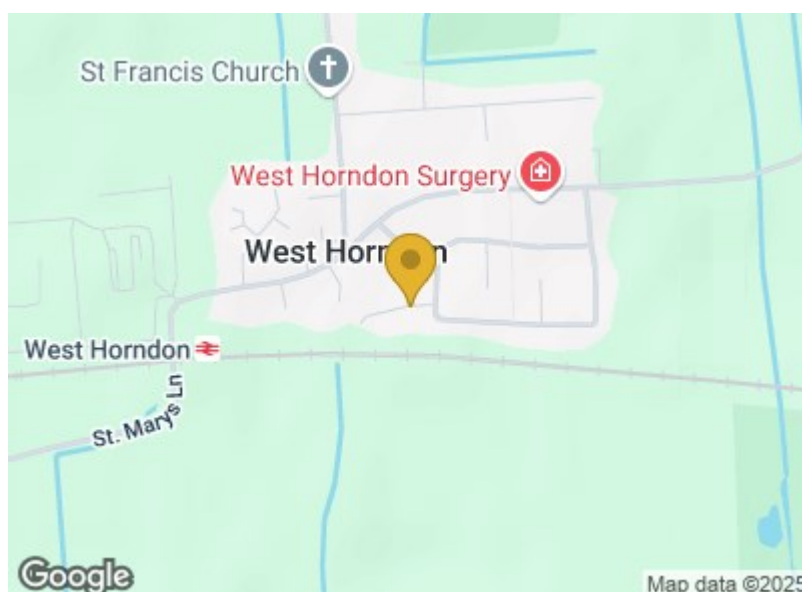
Garden

70' (21.34m)

Patio, lawn with surrounding flower beds, shed, outside tap and light, access to garage.

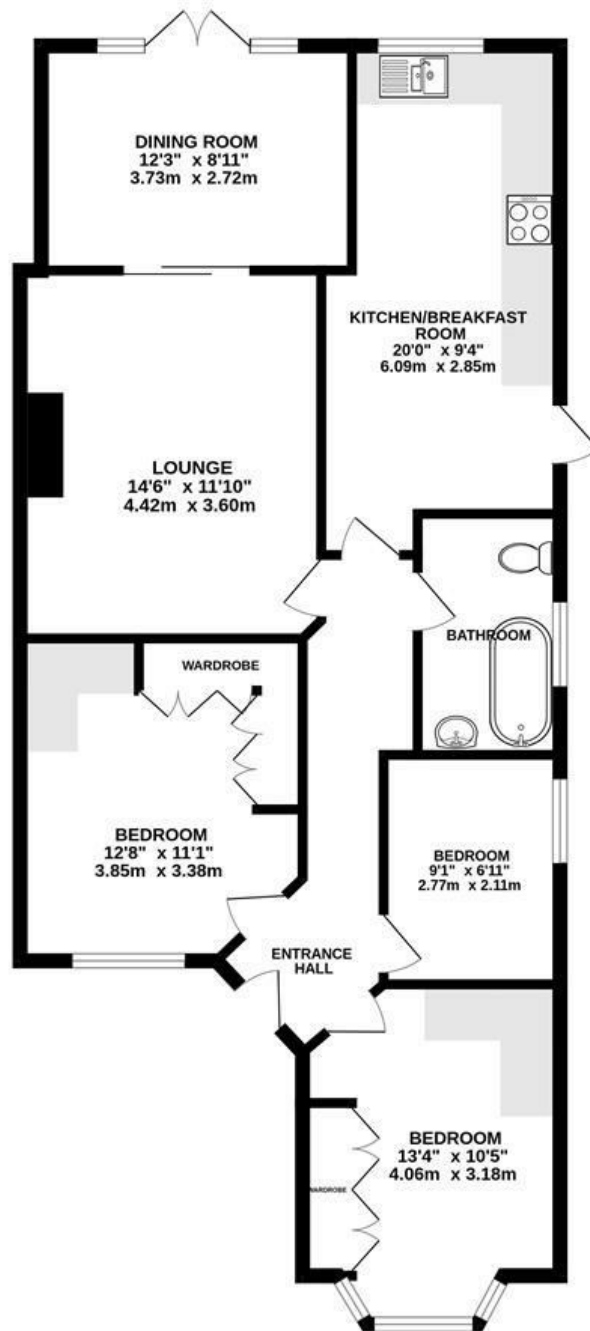
Driveway & Garage

Driveway to front, garage with power and light and door to garden.





GROUND FLOOR
888 sq.ft. (82.5 sq.m.) approx.



TOTAL FLOOR AREA : 888 sq.ft. (82.5 sq.m.) approx.

Whilst every attempt has been made to ensure the accuracy of the floorplan contained here, measurements of doors, windows, rooms and any other items are approximate and no responsibility is taken for any error, omission or mis-statement. This plan is for illustrative purposes only and should be used as such by any prospective purchaser. The services, systems and appliances shown have not been tested and no guarantee as to their operability or efficiency can be given.
Made with Metropix ©2025

These particulars, whilst believed to be accurate are set out as a general outline only for guidance and do not constitute any part of an offer or contract. Intending purchasers should not rely on them as statements of representation of fact, but must satisfy themselves by inspection or otherwise as to their accuracy. No person in this firms employment has the authority to make or give any representation or warranty in respect of the property.

Material Information:
Council Tax Band: D
Tenure: Freehold

