



East Park, Old Harlow, CM17 0SA

Available from Mid May 2025 is this two bedroom home offered on a part furnished basis, the accommodation includes entrance hall, reception room, kitchen, conservatory, two double bedrooms and bathroom.

£1,700 PCM (per calendar month)

Holding Deposit equal to one weeks rent

Security deposit equal to five weeks rent

Council Tax Band: C

East Park

Old Harlow, CM17 0SA



Entrance Hall

Part frosted double glazed entrance door, frosted double glazed window to front, stairs to first floor, under stair cupboard, radiator, laminate flooring.

Reception Room One

19'5 x 11'9 narrowing to 10' (5.92m x 3.58m narrowing to 3.05m)

Double glazed window to front, coved ceiling, two radiators, laminate flooring, double glazed French doors to conservatory.

Conservatory

15'10 x 9'4 (4.83m x 2.84m)

Double glazed French door to rear, double glazed window to rear, two radiators, laminate flooring.

Kitchen

10'2 x 7'10 (3.10m x 2.39m)

Open plan to conservatory, wall and base units, sink, plumbing for washing machine and dishwasher, electric hob, oven, extractor, microwave, part tiled walls, laminate flooring.

Landing

Cupboard housing boiler, laminate flooring.

Bedroom One

15'4 x 4'3 (4.67m x 1.30m)

Double glazed window to front, bi folding wardrobes, cupboard, radiator, laminate flooring.

Bedroom Two

12'5 x 9'10 (3.78m x 3.00m)

Double glazed window to rear, fitted sliding wardrobes, radiator, laminate flooring.

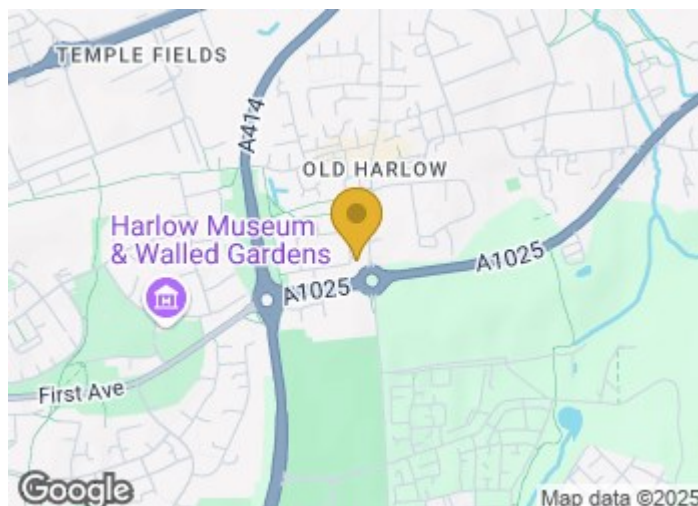
Bathroom

Frosted double glazed window to rear, low level WC, wash hand basin, panelled bath with electric shower, heated towel rail, tiled walls, vinyl flooring.

Garden

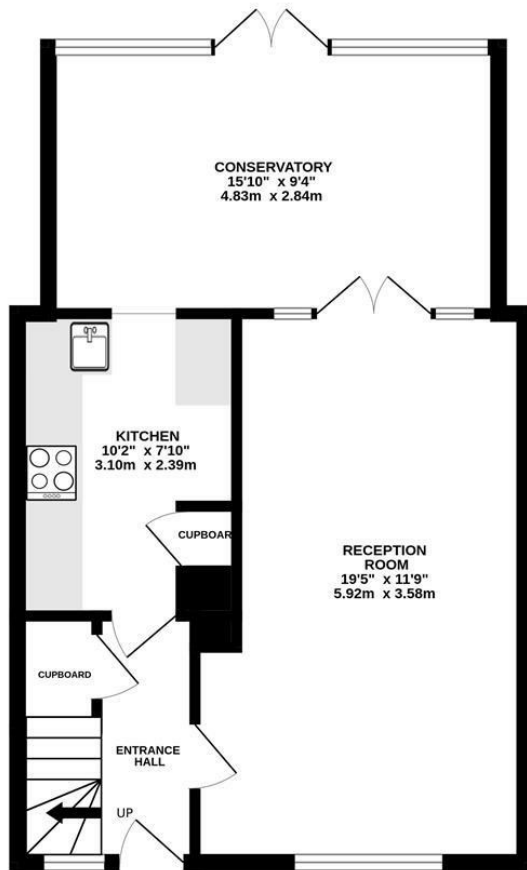
approximately 55' (approximately 16.76m)

Patio area, lawn, brick built storage shed.

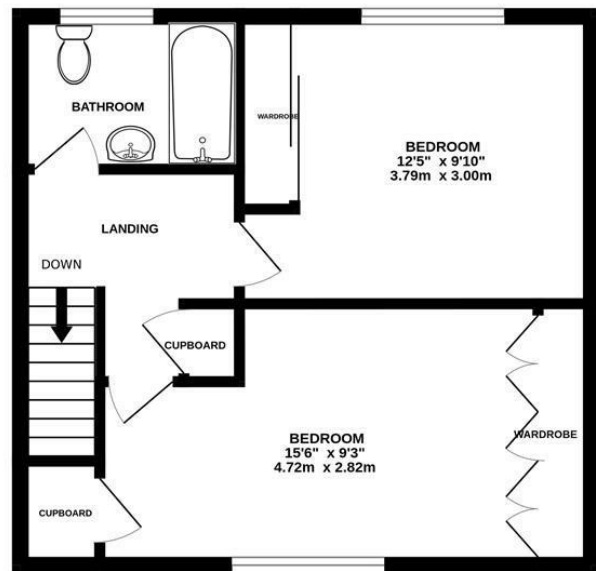




GROUND FLOOR
495 sq.ft. (46.0 sq.m.) approx.



1ST FLOOR
391 sq.ft. (36.3 sq.m.) approx.



TOTAL FLOOR AREA : 886 sq.ft. (82.3 sq.m.) approx.

Whilst every attempt has been made to ensure the accuracy of the floorplan contained here, measurements of doors, windows, rooms and any other items are approximate and no responsibility is taken for any error, omission or mis-statement. This plan is for illustrative purposes only and should be used as such by any prospective purchaser. The services, systems and appliances shown have not been tested and no guarantee as to their operability or efficiency can be given.
Made with Metropix ©2025

These particulars, whilst believed to be accurate are set out as a general outline only for guidance and do not constitute any part of an offer or contract. Interested parties should not rely on them as statements of representation of fact, but must satisfy themselves by inspection or otherwise as to their accuracy. No person in this firm's employment has the authority to make or give any representation or warranty in respect of the property.

Tenant Fees:

Holding deposit is one week's rent
Tenancy deposit is five weeks' rent.

