

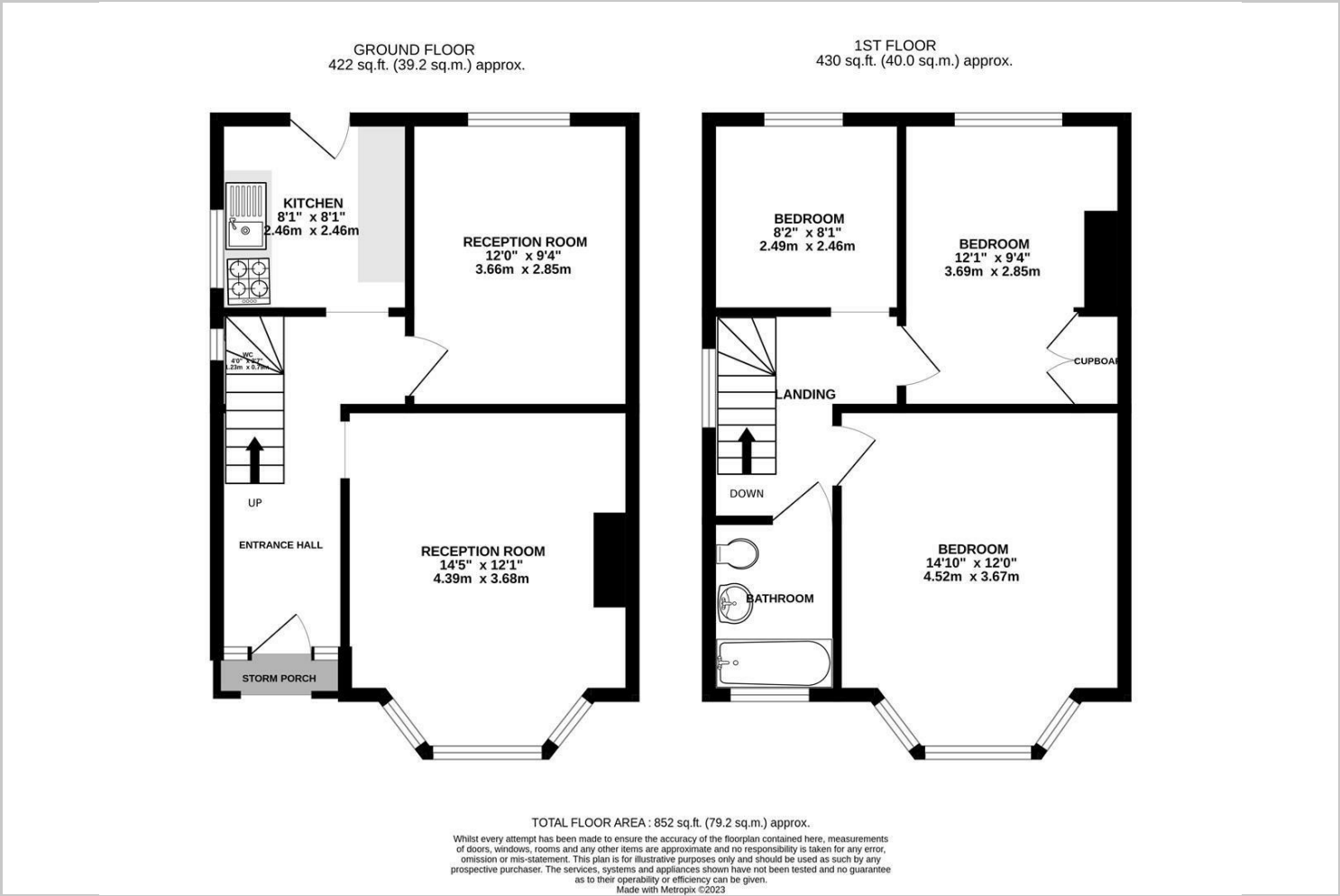


143 Hornchurch Road
, Hornchurch, RM12 4SZ
£425,000

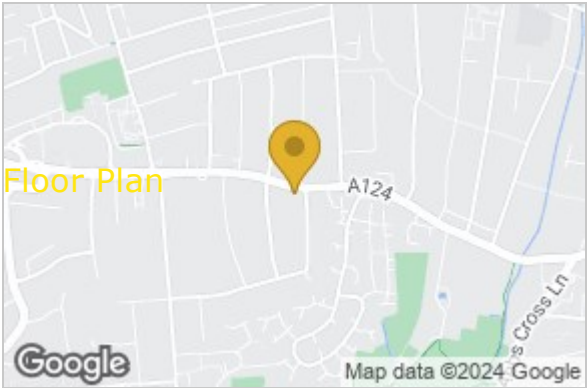


143 Hornchurch Road, Hornchurch, RM12 4SZ

Offered for sale with no onward chain is this three bedroom semi detached home, the accommodation includes entrance hall, ground floor WC, two reception rooms, three bedrooms and bathroom. Externally there is a driveway to the front and a 125ft rear garden.

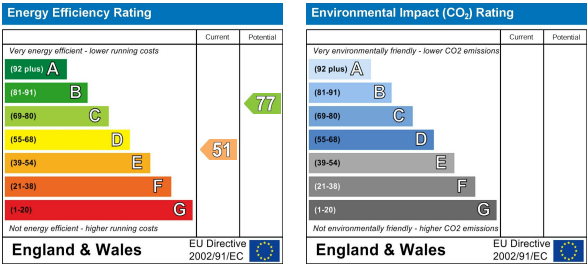


Area Map



Floor Plan

Energy Efficiency Graph



These particulars, whilst believed to be accurate are set out as a general outline only for guidance and do not constitute any part of an offer or contract. Intending purchasers should not rely on them as statements of representation of fact, but must satisfy themselves by inspection or otherwise as to their accuracy. No person in this firms employment has the authority to make or give any representation or warranty in respect of the property.