



5 Meadfarm Close

Romford, RM3 9FJ

A modern two bedroom first floor apartment located approximately 1 mile from Harold Wood Station, the accommodation includes entrance hall, open plan living area and kitchen, two double bedrooms, bathroom and private balcony.

Offers in excess of £270,000

5 Meadfarm Close

Romford, RM3 9FJ



Entrance Hall

Entrance door, Amtico flooring, radiator, intercom system.

Open Plan Living Area

16'6 x 15' narrowing to 11'9 (5.03m x 4.57m narrowing to 3.58m)

Double glazed French doors opening onto private balcony, two double glazed windows to rear and one to side. Amtico flooring, radiator.

Open Plan Kitchen Area

11'9 x 7'2 (3.58m x 2.18m)

Amtico flooring, stainless steel single drainer sink, gas hob, oven and extractor, integrated fridge/freezer dishwasher and washing machine, wall and base units, part tiled walls.

Bedroom One

13'1 x 9'9 (3.99m x 2.97m)

Double glazed window to rear, carpet, radiator.

Bedroom Two

10'5 x 7'8 (3.18m x 2.34m)

Double glazed window to front, carpet, radiator.

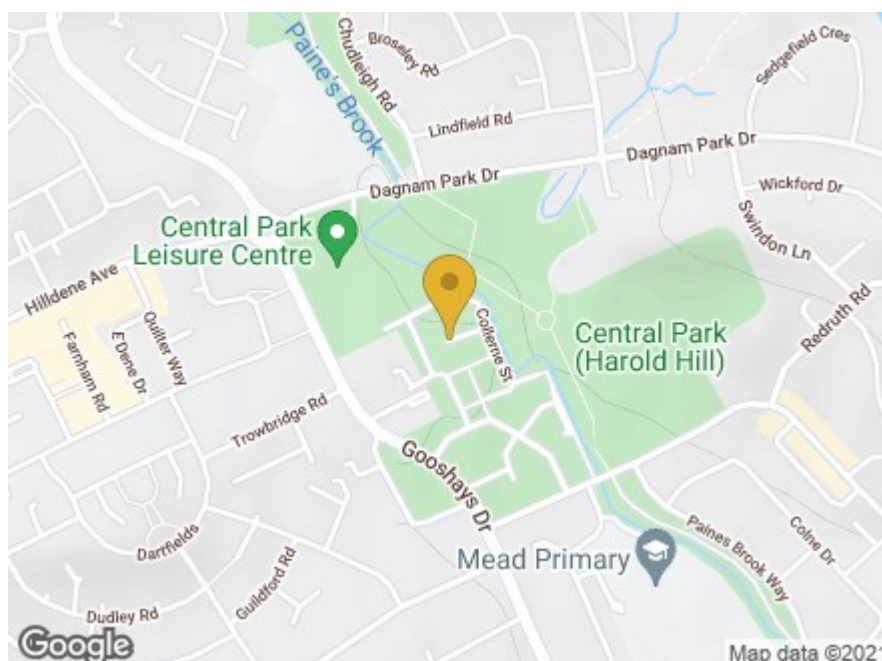
Bathroom

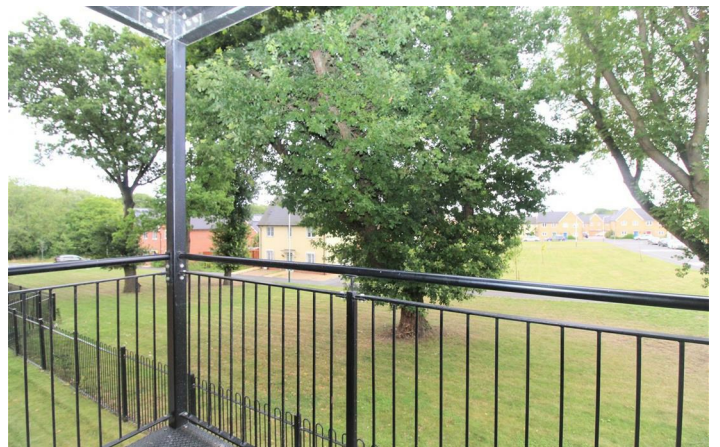
7'7 x 7' (2.31m x 2.13m)

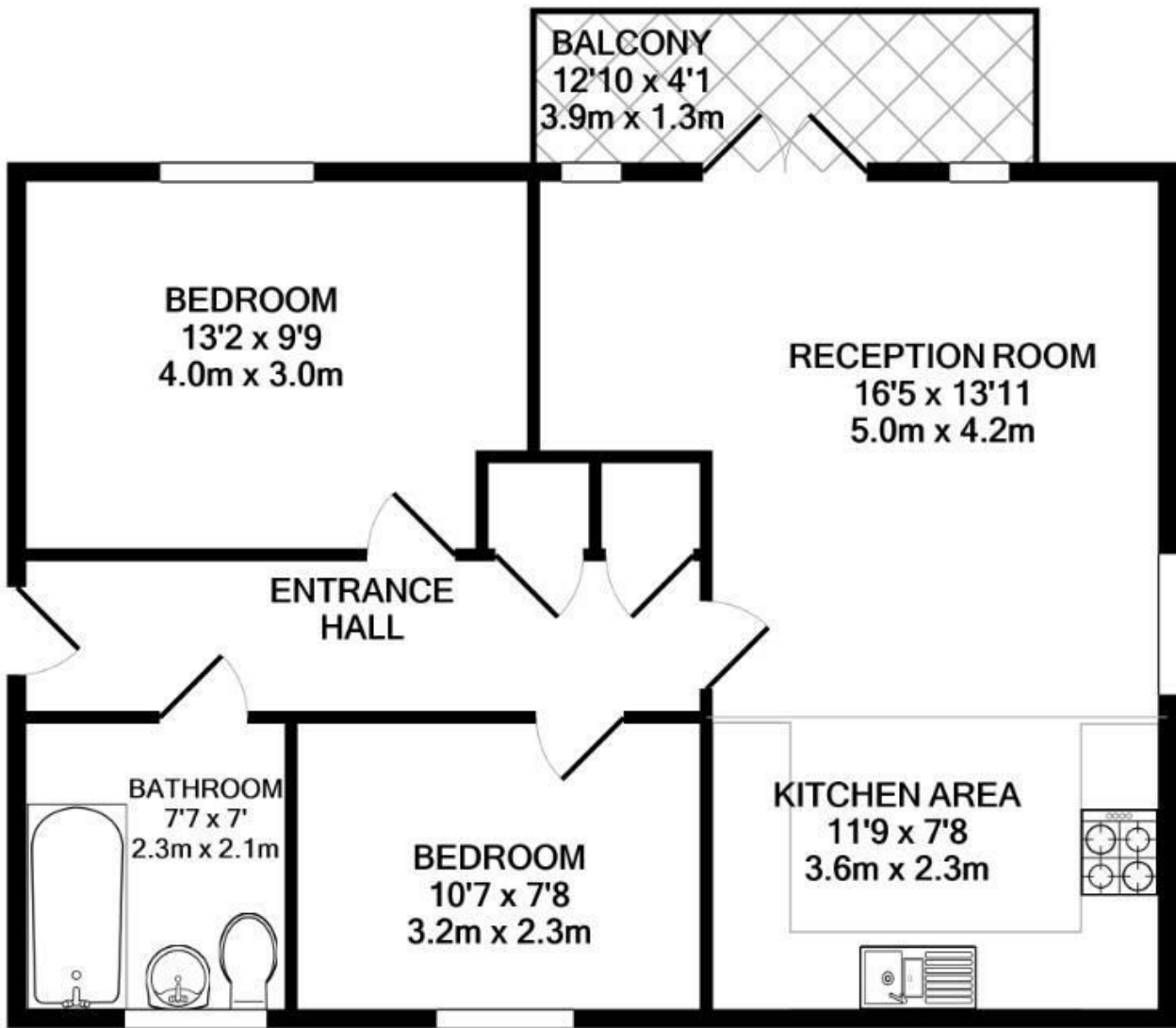
Frosted double glazed window to front, vinyl flooring, paneled bath with shower over, low level WC, pedestal wash hand basin, radiator, part tiled walls.

Parking

One allocated parking space to the front.







TOTAL APPROX. FLOOR AREA 632 SQ.FT. (58.7 SQ.M.)

Whilst every attempt has been made to ensure the accuracy of the floor plan contained here, measurements of doors, windows, rooms and any other items are approximate and no responsibility is taken for any error, omission, or mis-statement. This plan is for illustrative purposes only and should be used as such by any prospective purchaser. The services, systems and appliances shown have not been tested and no guarantee as to their operability or efficiency can be given

Made with Metropix ©2020

These particulars, whilst believed to be accurate are set out as a general outline only for guidance and do not constitute any part of an offer or contract. Intending purchasers should not rely on them as statements of representation of fact, but must satisfy themselves by inspection or otherwise as to their accuracy. No person in this firm's employment has the authority to make or give any representation or warranty in respect of the property.

