



Forum Magnum Square | County Hall Apartments | Waterloo | SE1 7GL

£775 Per Week

ICON
RESIDENTIAL

Forum Magnum Square | County Hall Apartments Waterloo | SE1 7GL

Nestled in the heart of Forum Magnum Square, this modern duplex flat in County Hall Apartments offers a splendid blend of comfort and convenience. Spanning an impressive 959 square feet, the property features a spacious reception room that serves as the perfect space for relaxation or entertaining guests.

With two well-appointed bedrooms, this flat is ideal for small families or professionals seeking a stylish urban retreat. The two bathrooms provide ample facilities, ensuring

- Spacious 2 bedrooms
- Bright reception room
- Central location
- Near local amenities
- Secure building

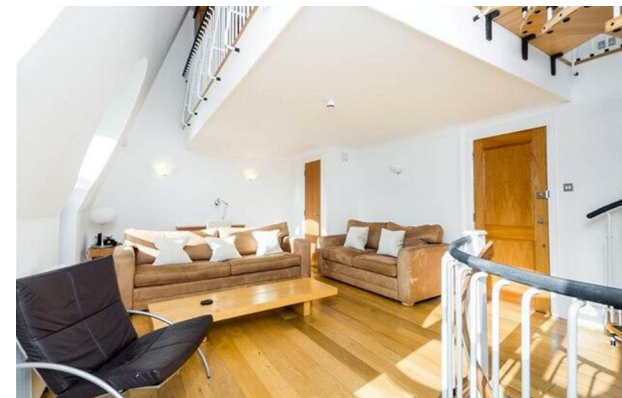
- Modern 2 bathrooms
- Contemporary design
- Close to transport links
- Ideal for professionals
- Viewing recommended

privacy and ease for all residents.

Constructed in 2000, the property boasts contemporary design and modern amenities, making it a desirable choice for those who appreciate a fresh living environment. Residents will also enjoy complimentary access to the private swimming pool, sauna, and

steam room, providing an excellent opportunity for leisure and wellness right at home.

This property is not just a flat; it is a lifestyle choice, offering both comfort and luxury in a vibrant location. Whether you are looking to buy or rent, this duplex flat is a remarkable opportunity that should not be missed.



Energy Efficiency Rating		
	Current	Potential
Very energy efficient - lower running costs		
(92 plus) A		
(81-91) B		
(69-80) C		
(55-68) D	63	75
(39-54) E		
(21-38) F		
(1-20) G		
Not energy efficient - higher running costs		
England & Wales		EU Directive 2002/91/EC

52 Grosvenor Gardens
London
SW1W 0AU
020 7956 2080
steven.hartman@icon-
residential.co.uk

<http://www.icon-residential.co.uk/>