



Living / Dining Room

A beautifully designed principal bedroom suite, quietly set above the main house and conceived almost as a private loft retreat.

Though modest in size, it is exceptionally well arranged and entirely comfortable for everyday living, with excellent storage and a strong sense of separation from the rest of the apartment.

Elegant Crittall doors open the room visually onto the kitchen and garden below, bringing in light and creating a striking sense of volume and airiness.

A skylight above the bed adds further natural light and character, while the sound of rain overhead gives the room an especially intimate and restful atmosphere.

Remote-controlled opening systems for the skylight, along with electric blinds (for both the skylight and the crittall doors) and air conditioning, make the space as practical as it is appealing.

The recently renovated en-suite bathroom, finished with a carefully chosen decorative scheme, gives the suite an added sense of style and charm.

Rather than focusing on its footprint alone, this is a room that reads as a true cocoon: distinctive, picturesque, and deeply inviting.

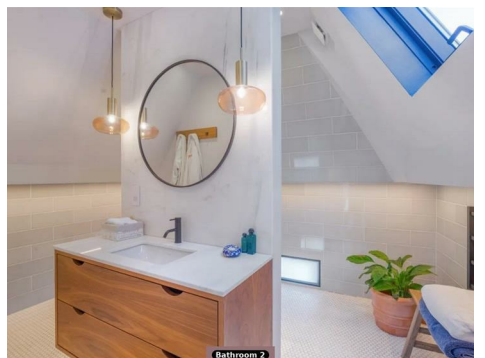
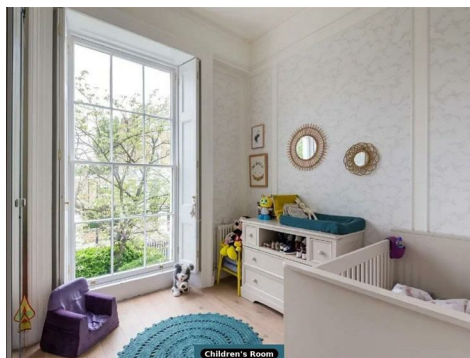
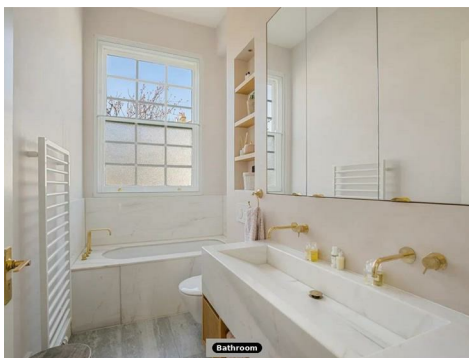
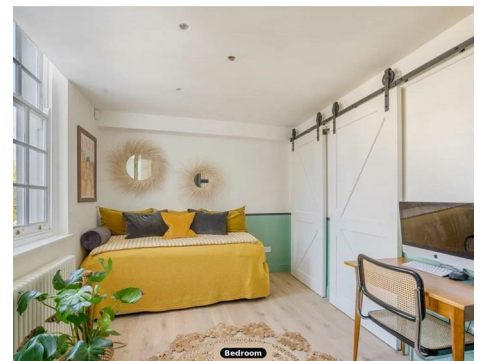
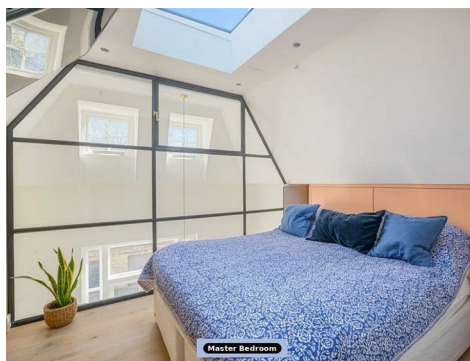
Marlborough Place

NW8 0PT

£2,200 Per Week

Subject to Contract

FOXGREGORY



FOXGREGORY

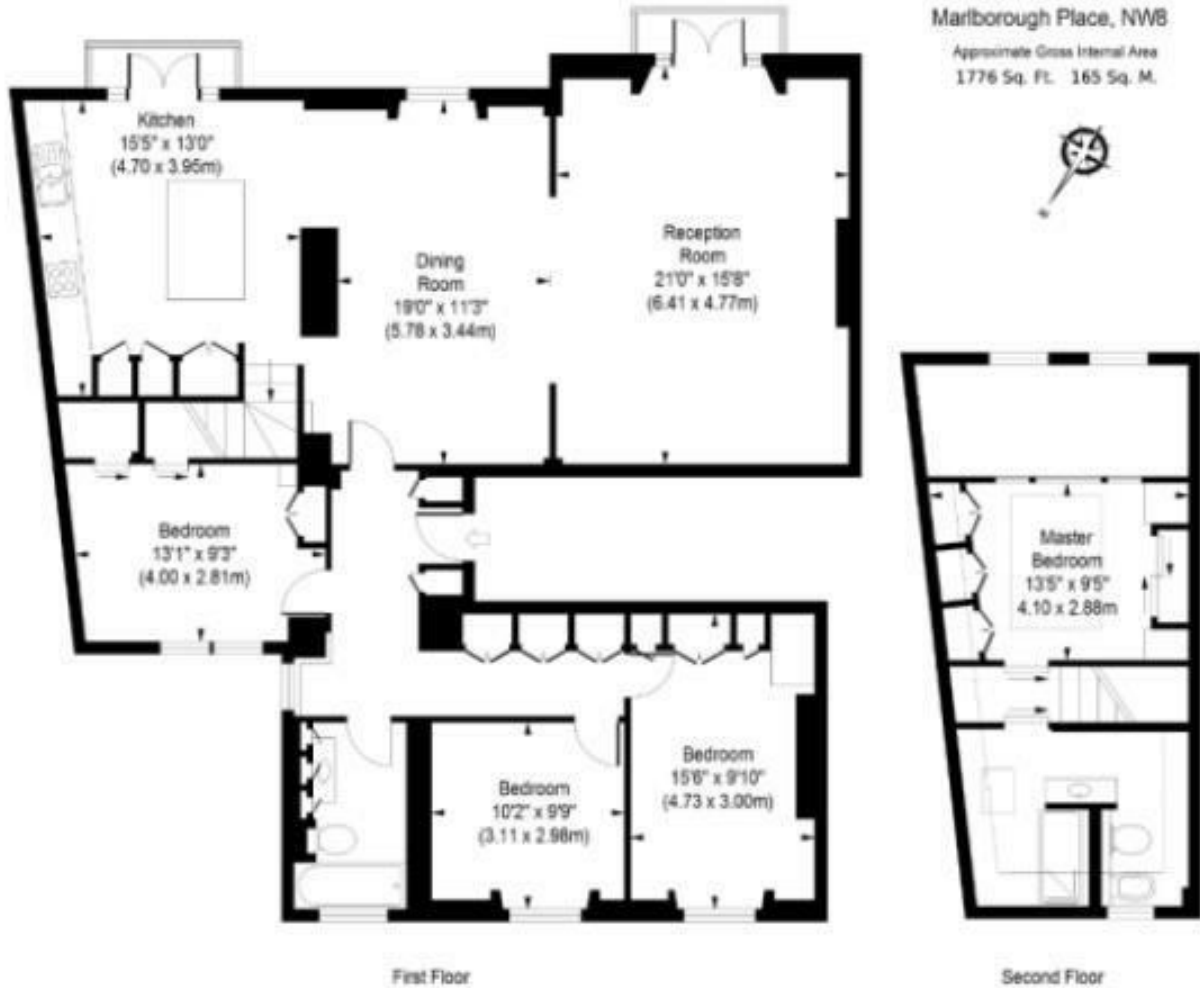
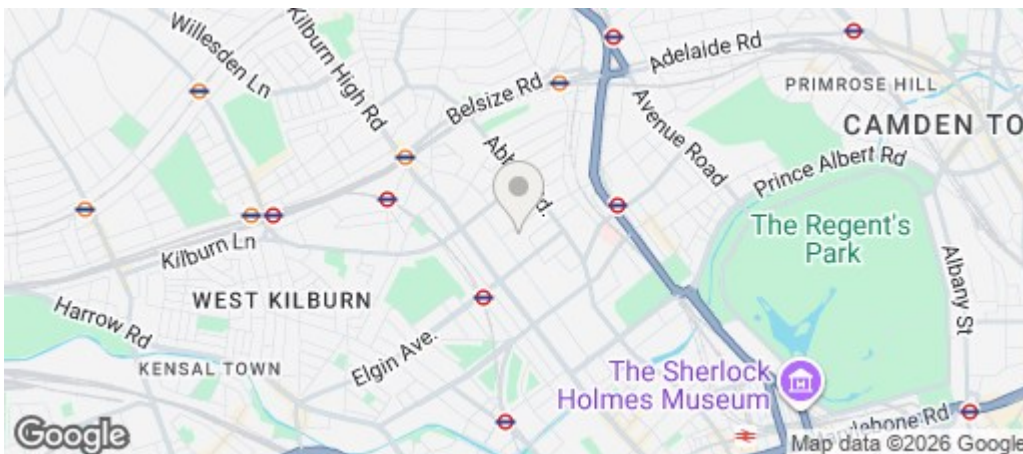


ILLUSTRATION FOR IDENTIFICATION PURPOSES ONLY

ALL MEASUREMENTS ARE MAXIMUM, AND INCLUDE WINDOW BAYS AND WARDROBES WHERE APPLICABLE
THIS PLAN MUST NOT BE REPRODUCED BY ANY OTHER PERSON WITHOUT PERMISSION



Energy Efficiency Rating		
	Current	Potential
Very energy efficient - lower running costs		
(92 plus) A		
(81-91) B		
(69-80) C		
(55-68) D		
(39-54) E		
(21-38) F		
(1-20) G		
Not energy efficient - higher running costs		
England & Wales	EU Directive 2002/91/EC	