



SOLE AGENT.

A bright and spacious two-bedroom apartment set on the fourth floor of a well-maintained building with lift access, ideally located close to Regent's Park.

The property is beautifully presented throughout, offering generous living space and an abundance of natural light, making it an ideal home for professional sharers or a couple seeking a well-connected London base.

Situated in the heart of St John's Wood , the area offers excellent transport links alongside a wide selection of cafés, restaurants, and local amenities. The open green spaces of Regent's Park are just a short walk away, perfect for leisure and outdoor activities.

Townshend Court

NW8 6LD

£588 Per Week

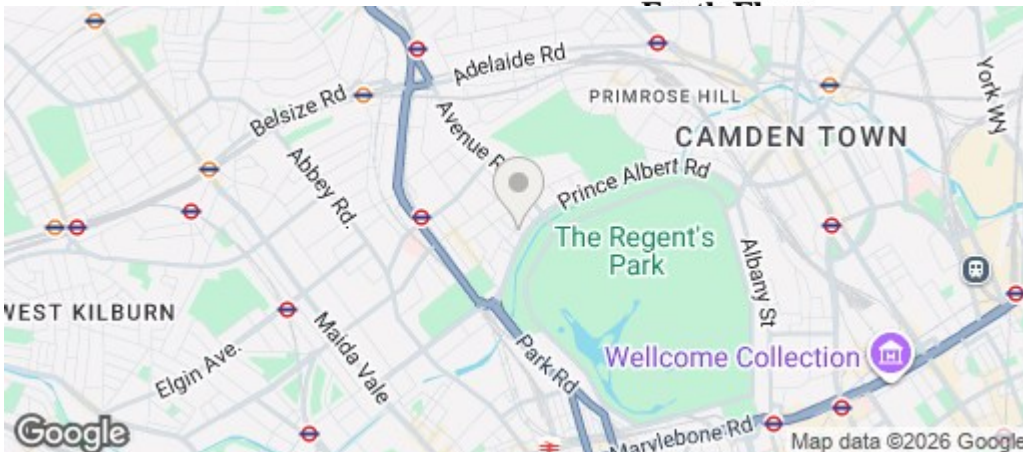
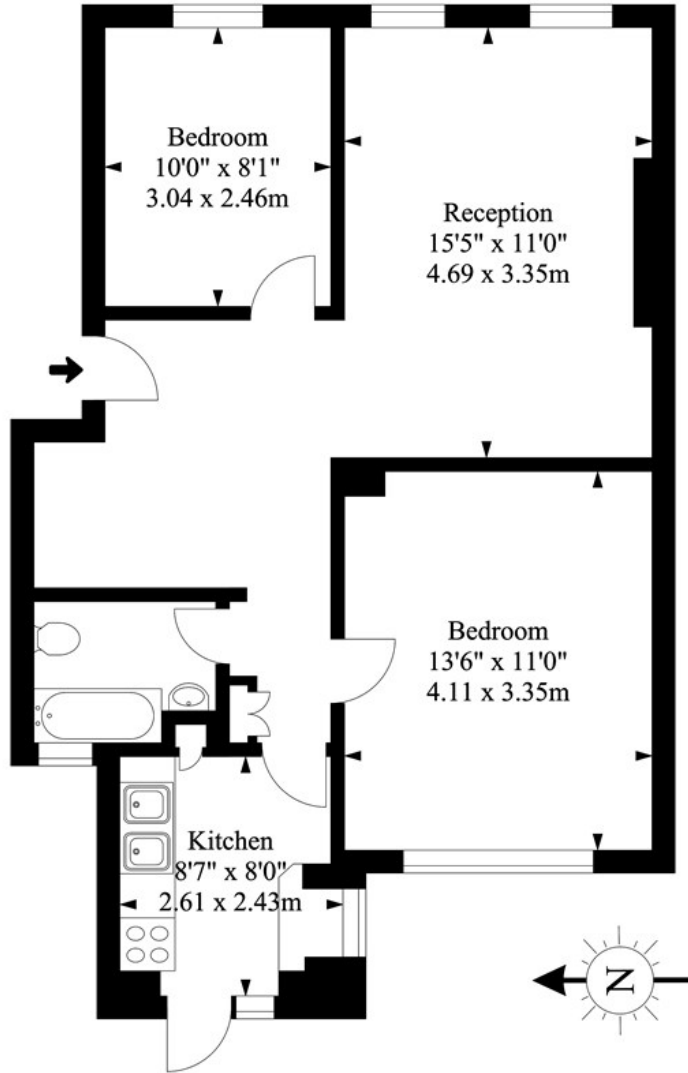
Subject to Contract

FOXGREGORY



FOXGREGORY

Townshend Court
Townshend Road, NW8 7DR
 Approx. Gross Internal Area
642.28 Ft² - 59.67 M²



Energy Efficiency Rating		
	Current	Potential
Very energy efficient - lower running costs		
(92 plus) A		
(81-91) B		
(69-80) C		
(55-68) D		
(39-54) E	50	67
(21-38) F		
(1-20) G		
Not energy efficient - higher running costs		
England & Wales	EU Directive 2002/91/EC	