



A beautifully refurbished, furnished two-bedroom, two bathroom apartment in a sought-after block with 24-hour concierge service.

This stylish home is located just moments away from St John's Wood Underground Station (Jubilee Line). Enjoy easy access to the vibrant shops and restaurants of St John's Wood High Street, with convenient bus routes to Camden Market, Regent's Park, and Baker Street.

Heating and hot water is included in the rental price.

Contact us to view or for more information.

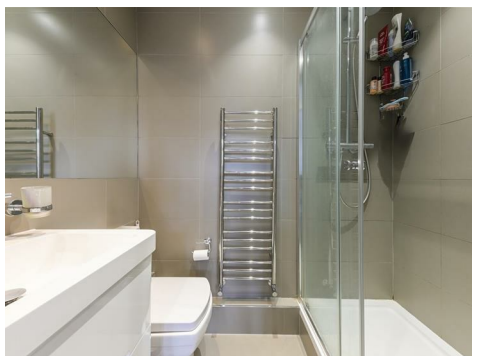
Grove End Road

NW8 9LP

£845 Per Week

Subject to Contract

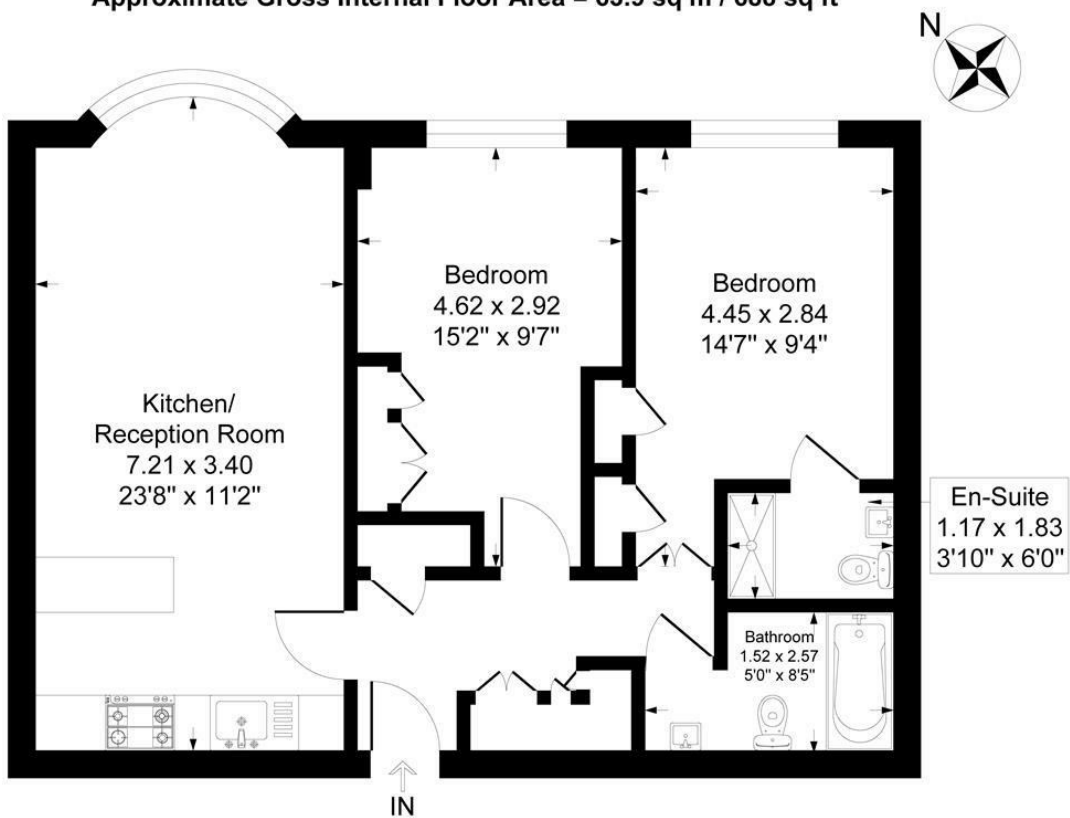
# FOXGREGORY





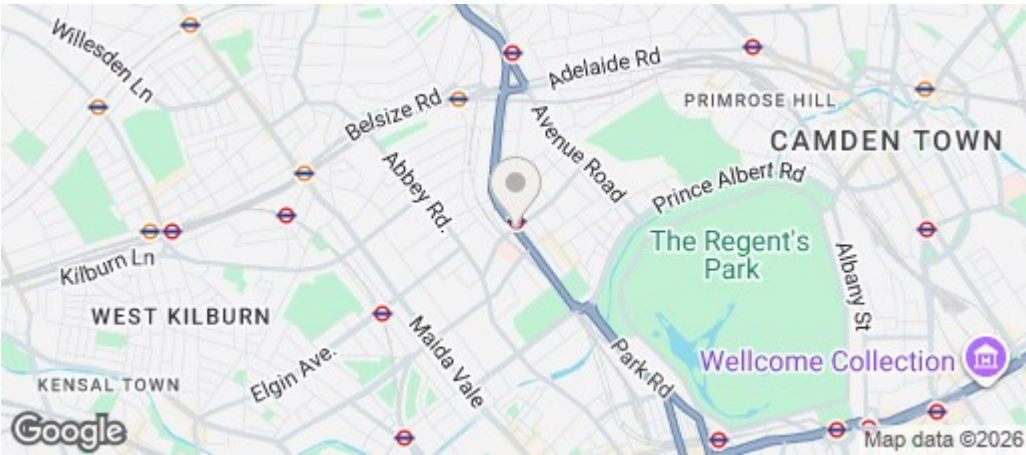
Grove End Gardens, Grove End Road, London NW8

Approximate Gross Internal Floor Area = 63.9 sq m / 688 sq ft



First Floor

Illustration for identification purposes only, measurements are approximate, not to scale.



Energy Efficiency Rating		
	Current	Potential
Very energy efficient - lower running costs		
(92 plus) <b>A</b>		
(81-91) <b>B</b>		
(69-80) <b>C</b>		
(55-68) <b>D</b>		
(39-54) <b>E</b>		
(21-38) <b>F</b>		
(1-20) <b>G</b>		
Not energy efficient - higher running costs		
<b>England &amp; Wales</b>	EU Directive 2002/91/EC	