



A beautifully refurbished, bright two-bedroom furnished apartment situated within a highly sought-after purpose-built block, offering 24-hour concierge service and access to stunning communal gardens.

This stylish home has been updated to a modern standard, providing a bright and inviting living space. Grove End Gardens is ideally located just 0.4 miles from the boutique shops and cafés of St John's Wood High Street and only 0.1 miles from St John's Wood Underground Station (Jubilee Line), ensuring effortless connectivity across London.

Heating and hot water is included in the rental price.

For more details or to arrange a viewing, please contact us today.

Grove End Road

NW8 9LR

£875 Per Week

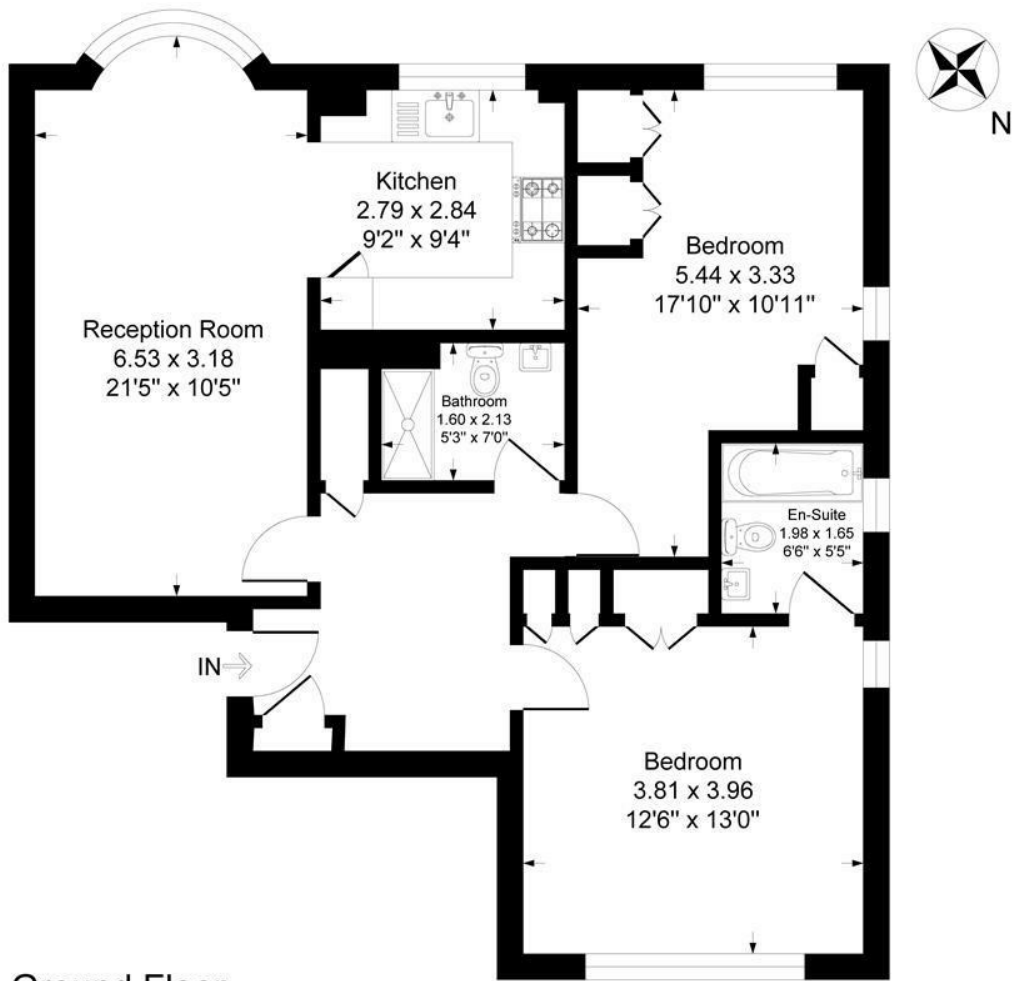
Subject to Contract

# FOXGREGORY



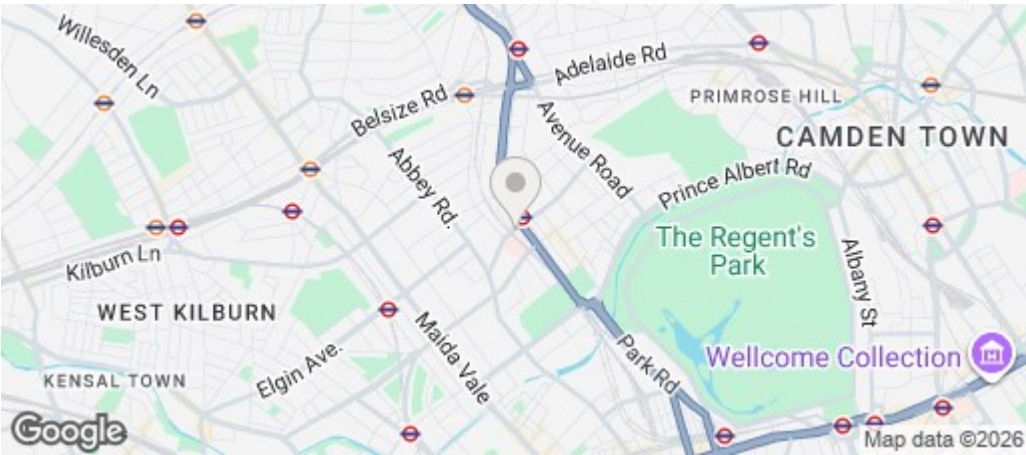
Grove End Gardens, Grove End Road, London NW8

Approximate Gross Internal Floor Area = 79.9 sq m / 860 sq ft



Ground Floor

Illustration for identification purposes only, measurements are approximate, not to scale.



Energy Efficiency Rating		
	Current	Potential
Very energy efficient - lower running costs		
(92 plus) <b>A</b>		
(81-91) <b>B</b>		
(69-80) <b>C</b>		
(55-68) <b>D</b>		
(39-54) <b>E</b>		
(21-38) <b>F</b>		
(1-20) <b>G</b>		
Not energy efficient - higher running costs		
<b>England &amp; Wales</b>	EU Directive 2002/91/EC	