



Bright One-Bedroom Flat with Concierge and Communal Gardens – St John's Wood

Set within a modern purpose-built block, this bright one-bedroom flat offers comfortable living in a sought-after location. Positioned on the second floor, the apartment benefits from 24-hour concierge service, a passenger lift, and beautifully maintained communal gardens.

The property comprises a spacious reception room, fully fitted kitchen, and a modern bathroom. It is offered furnished, with heating and hot water included in the rent.

Ideally suited for a professional tenant, the flat will be available from mid-December for a long-term tenancy.

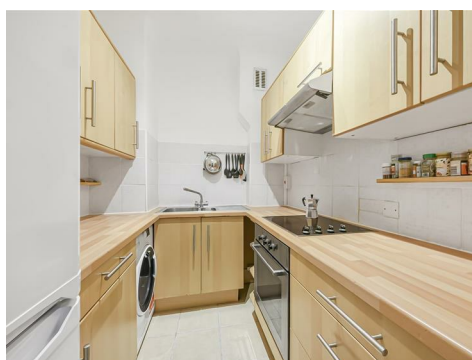
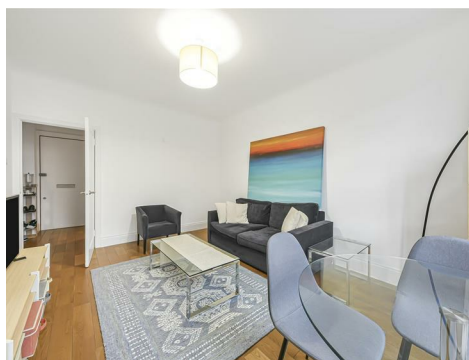
33 Grove End Road, Grove End Gardens

NW8 9LR

£585 Per Week

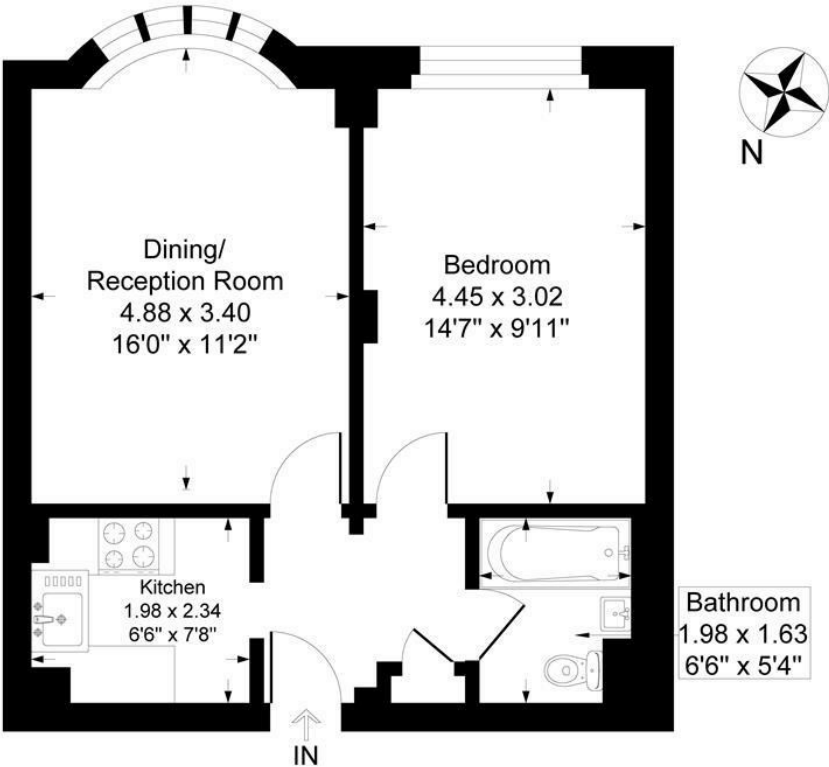
Subject to Contract

FOXGREGORY



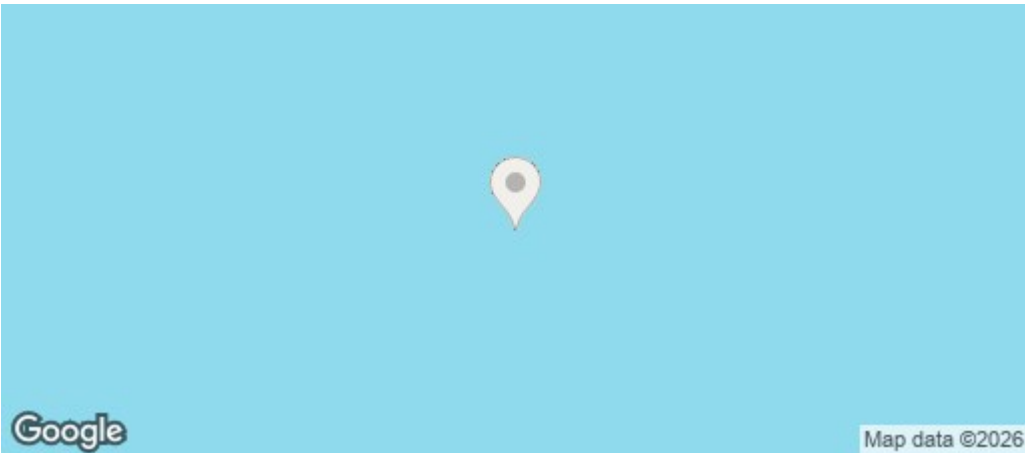
Grove End Gardens, Grove End Road,
St John's Wood, London, NW8

Approximate Gross Internal Floor Area = 44.0 sq m / 474 sq ft



Second Floor

Illustration for identification purposes only, measurements are approximate, not to scale.



Energy Efficiency Rating		
	Current	Potential
Very energy efficient - lower running costs		
(92 plus) A		
(81-91) B		
(69-80) C		
(55-68) D		
(39-54) E		
(21-38) F		
(1-20) G		
Not energy efficient - higher running costs		
England & Wales		EU Directive 2002/91/EC