



SOLE AGENT – An exceptional four-bedroom, four-bathroom mews house of approximately 1,979 sq. ft., situated in the heart of Little Venice.

Roberts Close is an exclusive private gated development, offering both security and tranquillity in one of London's most desirable neighbourhoods.

Arranged over four floors, this impressive home has been recently refurbished to an exceptionally high standard throughout, blending modern luxury with elegant design. The property provides generous living space, well-proportioned bedrooms, and beautifully finished bathrooms, making it the ideal family home.

Perfectly located, Roberts Close is just moments from the boutique shops and cafés of Little Venice, with Warwick Avenue Underground Station (Bakerloo Line) only a short walk away, providing excellent connections across London.

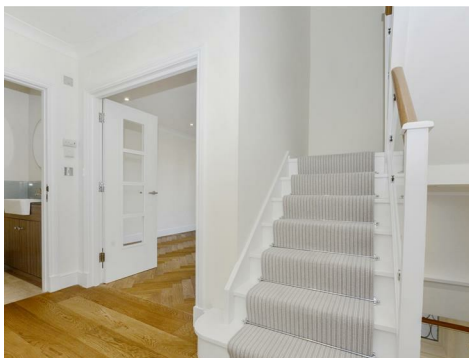
Robert Close

W9 1BY

£7,500 Per Month

Subject to Contract

FOXGREGORY



Robert Close
Randolph Avenue, W9 1BY
Approx. Gross Internal Area
1975.28 Ft² - 183.51 M²

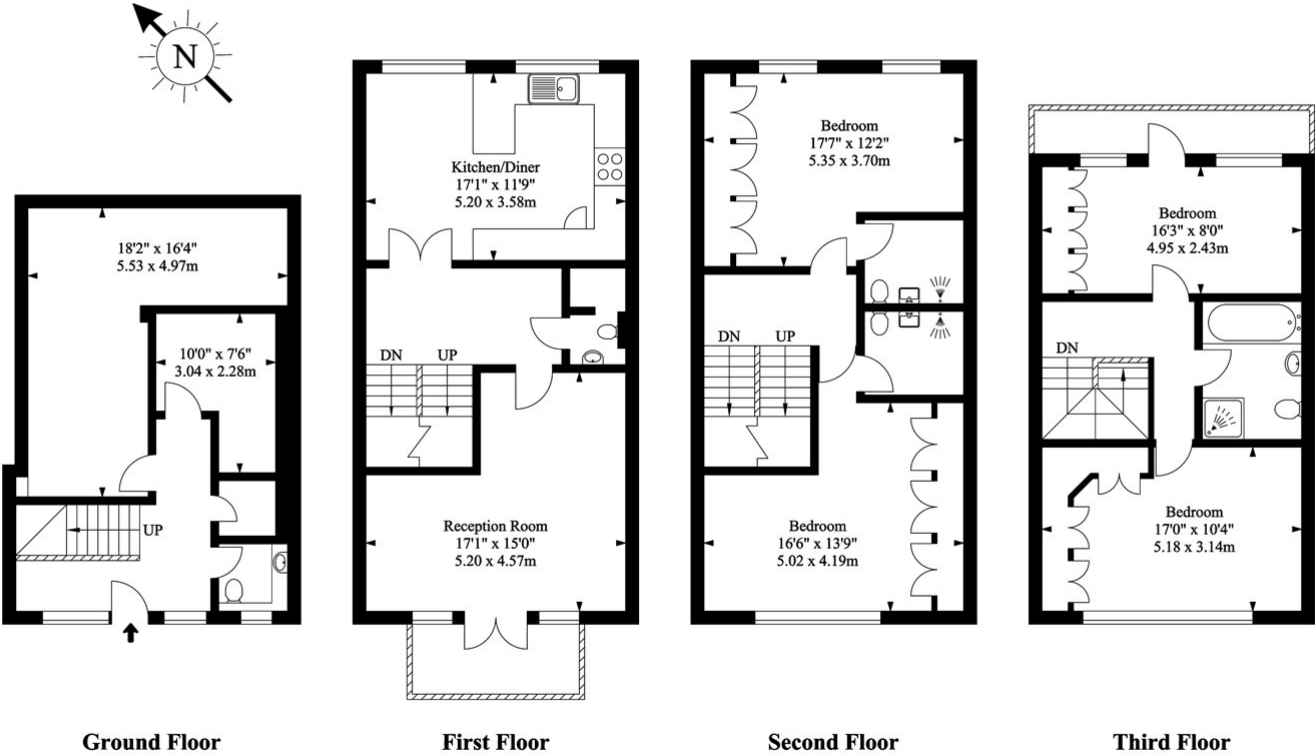
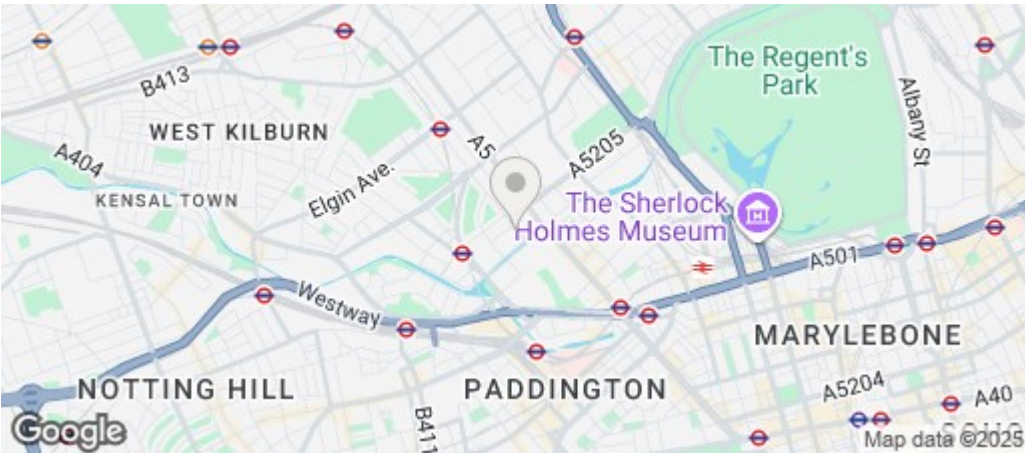


Illustration For Identification Purposes Only. Not To Scale



Energy Efficiency Rating		
	Current	Potential
Very energy efficient - lower running costs		
(92 plus) A		
(81-91) B		84
(69-80) C		
(55-68) D	61	
(39-54) E		
(21-38) F		
(1-20) G		
Not energy efficient - higher running costs		
England & Wales	EU Directive 2002/91/EC	