

# WILKINSON

Estate Agents, Sales, Lettings & Property Management



**Unit 1 Forest Road, London**

**E7 0DN**

**£1,850 Per month**

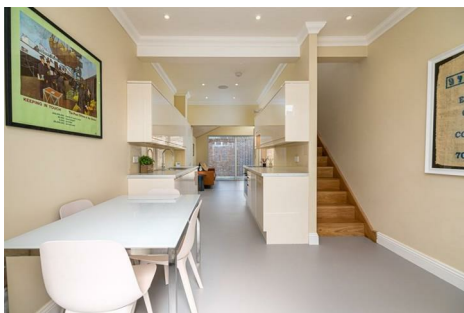
Wilkinson Estate Agents are pleased to bring this spacious two-storey one-bedroom house to the rental market. The property is situated in the ever-popular 'Wanstead Corner' or Forest Gate. It is less than twenty meters from the glorious expanse of Wanstead Flats and is part of a more extensive gated development designed by award-winning architects Dallas Pierce Quintero.

The property has been completely remodelled and refurbished to the highest standards from a former commercial/industrial building whilst retaining much of its original features and character. It is offered fully furnished whilst including magnificent features such as underfloor heating, double glazed windows, Sonos sound system throughout, video entry system, alarm system, 55" wall-mounted Sony TV, bespoke fitted wardrobes and furniture, quality carpets and furnishings, private courtyard garden, ground floor cloakroom, direct gated access to Wanstead Flats.

Other benefits include being a short walk away from many great cafes, bars and restaurants in the arches on Winchelsea Road, along with being within close proximity to transport links such as Forest Gate (Elizabeth Line) and Wanstead Park train stations.

Available from 8th August 2024, Furnished (Only)


- Sole Agents -



| Environmental Impact (CO <sub>2</sub> ) Rating                  |  | Current | Potential |
|---|--|---------|-----------|
| Very environmentally friendly - lower CO <sub>2</sub> emissions |  |         |           |
| (92 plus) A   |  |         |           |
| (81-91) B   |  |         |           |
| (69-80) C   |  |         |           |
| (55-68) D   |  |         |           |
| (39-54) E   |  |         |           |
| (21-38) F   |  |         |           |
| (1-20) G  |  |         |           |
| Not environmentally friendly - higher CO <sub>2</sub> emissions |  |         |           |

**England & Wales**


EU Directive  
2002/91/EC



| Environmental Impact (CO <sub>2</sub> ) Rating                  |  | Current | Potential |
|---|--|---------|-----------|
| Very environmentally friendly - lower CO <sub>2</sub> emissions |  |         |           |
| (92 plus) A   |  |         |           |
| (81-91) B   |  |         |           |
| (69-80) C   |  |         |           |
| (55-68) D   |  |         |           |
| (39-54) E   |  |         |           |
| (21-38) F   |  |         |           |
| (1-20) G  |  |         |           |
| Not environmentally friendly - higher CO <sub>2</sub> emissions |  |         |           |

**England & Wales**

EU Directive  
2002/91/EC



**WILKINSON**  
Estate Agents, Sales, Lettings & Property Management