



## Bruce Grove Watford, WD24 4DR £475,000

We at Coopers are delighted to offer for sale this spacious three-bedroom mid-terraced property, ideally situated on Bruce Grove, a quiet residential street in the heart of North Watford. Offering a wonderful balance of character and potential, this spacious home presents an ideal opportunity for growing families, first-time buyers, or investors alike.

The ground floor comprises of a generous reception room off the hall, leading through to a second living area or dining space, and a fitted kitchen to the rear. Upstairs, the property benefits from three well-proportioned bedrooms and a family bathroom.

Externally, the property enjoys a private rear garden, perfect for entertaining, while on-street parking is readily available to the front. Bruce Grove is a highly regarded and well-connected street, with excellent access to local shops, schools, and transport links. Watford Junction and Watford North stations are within easy reach, providing fast links into London Euston, making this a convenient option for commuters.

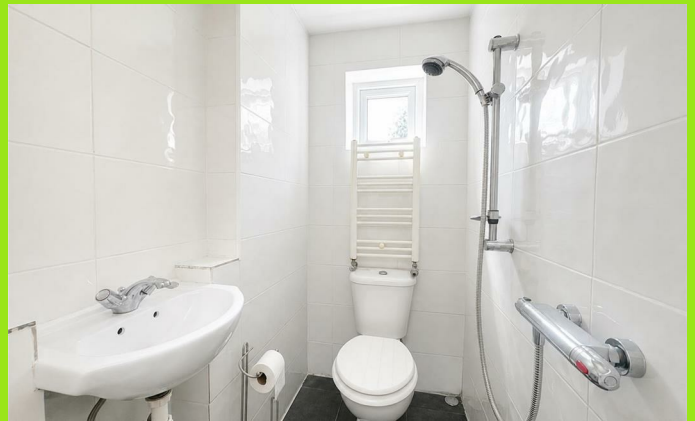
Offered with no onward chain, early viewing is highly recommended.

- No Upper Chain
- Three Bedrooms
- Two Reception Rooms
- Large Modern Fitted Kitchen
- Within walking distance to Watford Junction station
- Easy access to local shops, amenities, schools and major road links (M1, M25, A41)



164 St. Albans Road, Watford, Hertfordshire, WD24 4AS

Tel: 01923 228822 | [watford@coopersestateagents.co.uk](mailto:watford@coopersestateagents.co.uk) | [www.coopersestateagents.co.uk](http://www.coopersestateagents.co.uk)



Energy Efficiency Rating		Environmental Impact (CO <sub>2</sub> ) Rating	
Current	Potential	Current	Potential
Very energy efficient - lower running costs		Very environmentally friendly - lower CO <sub>2</sub> emissions	
(92 plus) <b>A</b>		(92 plus) <b>A</b>	
(81-91) <b>B</b>		(81-91) <b>B</b>	
(69-80) <b>C</b>		(69-80) <b>C</b>	
(55-68) <b>D</b>		(55-68) <b>D</b>	
(39-54) <b>E</b>		(39-54) <b>E</b>	
(21-38) <b>F</b>		(21-38) <b>F</b>	
(1-20) <b>G</b>		(1-20) <b>G</b>	
Not energy efficient - higher running costs		Not environmentally friendly - higher CO <sub>2</sub> emissions	
<b>68</b>			
England & Wales		England & Wales	
EU Directive 2002/91/EC		EU Directive 2002/91/EC	

