



01932 560777
johnsonandjones.co.uk

Springfields Close
Chertsey, Surrey

Johnson & Jones

9 Springfields Close Chertsey, KT16 8JT

£1,850 PCM

Johnson & Jones are delighted to present this stunning two-double-bedroom home, perfectly situated in a highly regarded cul-de-sac. Combining modern comfort with exceptional convenience, this property truly must be seen to be fully appreciated.

Upon entering, you are greeted by a welcoming entrance hall that leads through to a bright, rear-aspect lounge. This inviting space features a large under-stairs storage cupboard and elegant French doors that open directly onto the garden. The separate front-aspect kitchen is fully equipped with integrated appliances, including a fridge/freezer, cooker, gas hob, and washing machine.

Upstairs, the first floor boasts two remarkably spacious double bedrooms, both benefiting from excellent fitted wardrobes. A particular feature of the home is the luxurious walk-in shower room, beautifully finished with a contemporary white three-piece suite and premium chrome fixtures.

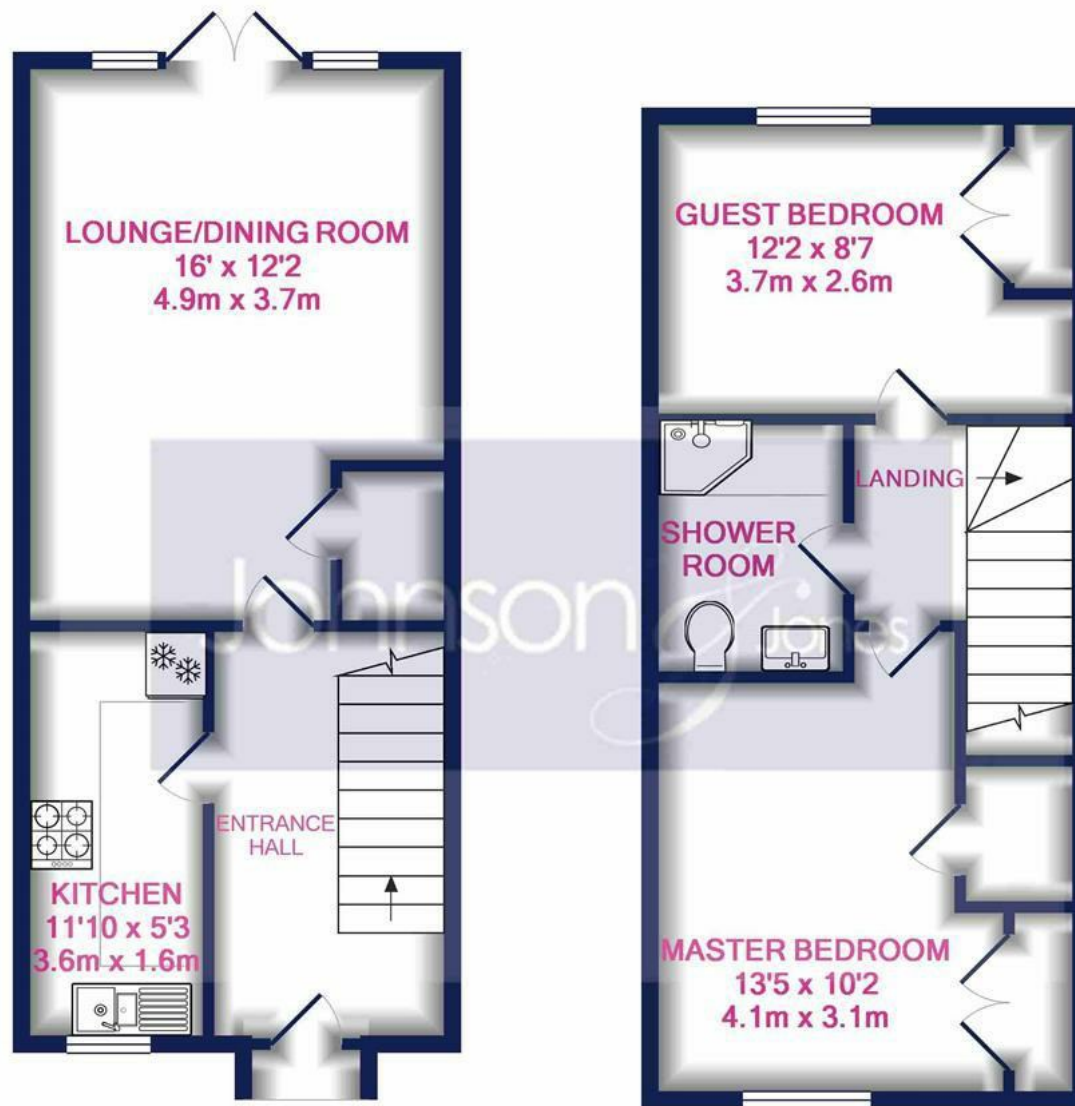
Externally, the property enjoys a lovely, sunny rear garden complete with a paved patio area for outdoor entertaining, a neat lawn framed by mature shrubbery, and a handy storage shed. Unusually for a property of this type, it includes two allocated parking spaces alongside an abundance of visitor parking. Complete with gas central heating, double-glazed windows, and plush, nearly-new silver carpets throughout, early internal viewings are highly recommended.

Available - Wednesday 9th September

Deposit - £2,134

Council Tax - Band D - £2,492.99

EPC - D Rating - 65



GROUND FLOOR

1ST FLOOR

SPRINGFIELDS CLOSE, CHERTSEY

Measurements are approximate. Not to scale. Illustrative purposes only
Made with Metropix ©2019

Disclaimer: Johnson and Jones Estate Agents cannot verify that the equipment, apparatus, fittings or services within this property are in working order, as they have not tested the relevant items. The buyer is advised to obtain verification from the solicitor dealing with the conveyancing or survey.



© www.JohnsonandJones.co.uk



© www.JohnsonandJones.co.uk



© www.JohnsonandJones.co.uk



© www.JohnsonandJones.co.uk



10 London Street. Chertsey
Surrey. KT16 8AA

Johnson & Jones