



01932 560777
johnsonandjones.co.uk

Brookside
Chertsey, Surrey

Johnson & Jones

15 Brookside Chertsey, KT16 9ES

£2,100 PCM

Perfectly presented throughout and located in a highly desirable cul-de-sac, moments from Pycroft Grange School, we have this fantastic example of a three bedroom family home.

Internal accommodation briefly comprises a spacious entrance hall with a selection of storage cupboards. A large front aspect lounge with feature fireplace and french doors leading through to the dining room. The dining room has patio doors out to the rear garden and is open plan to the modern white high gloss kitchen. Leading up to the first floor with have a large landing with again a great selection of storage spaces. All three bedrooms are great sizes and all boast fitted wardrobes. The bathroom has been recently updated and has a white three piece suite, chrome fixtures and a shower above the bath.

Externally we have spacious front and rear gardens. The front is mostly laid to lawn, but does have a drop kerb if it needs to be used as a driveway. The rear has been fully paved making it very low maintenance and also has a handy storage shed with power. The cul-de-sac has an abundance of parking and a lovely childrens play area in the centre of the communal grounds. The Town Centre is only a short walk away, as is Chertsey Railway Station.

Further benefits include gas central heating & double glazed windows. Early internal inspections are highly recommended!

Available - Thursday 30th July

Deposit: £2,423

Council Tax - Band D - £2,492.99

EPC - D Rating - 66



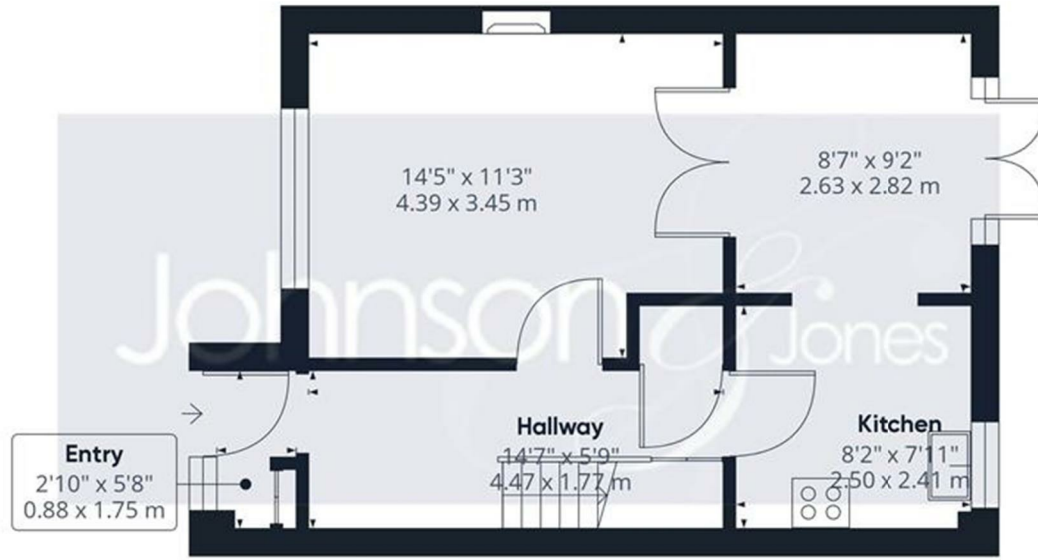
www.johnsonandjones.co.uk



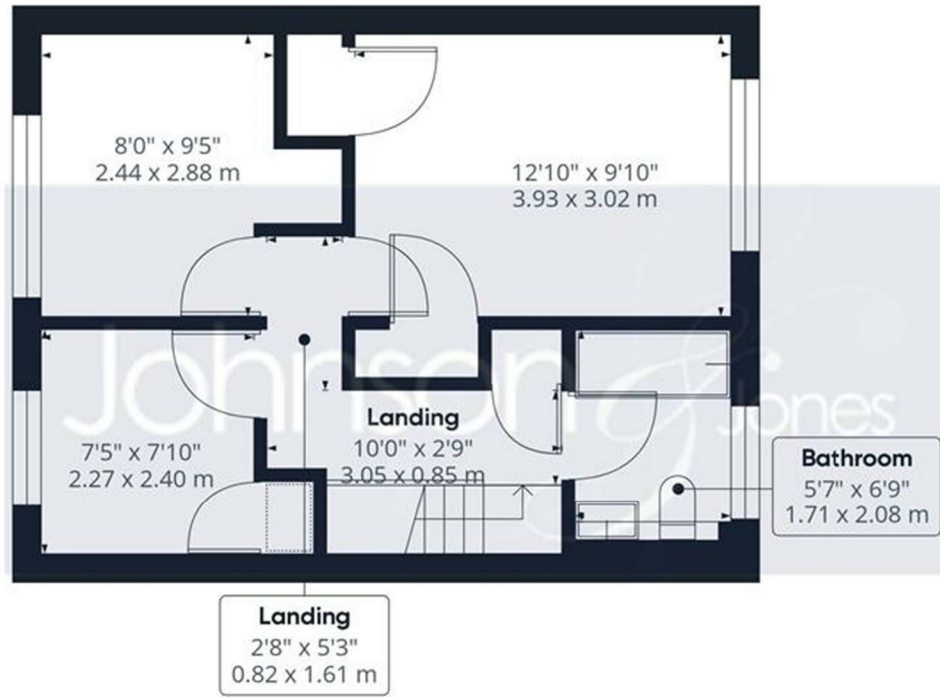
www.johnsonandjones.co.uk

Disclaimer: Johnson and Jones Estate Agents cannot verify that the equipment, apparatus, fittings or services within this property are in working order, as they have not tested the relevant items. The buyer is advised to obtain verification from the solicitor dealing with the conveyancing or survey.





Floor 0 Building 1



Floor 1 Building 1

Approximate total area⁽¹⁾
 794.62 ft²
 73.82 m²

(1) Excluding balconies and terraces

While every attempt has been made to ensure accuracy, all measurements are approximate, not to scale. This floor plan is for illustrative purposes only.



10 London Street, Chertsey
Surrey, KT16 8AA

Johnson & Jones