



01932 560777
johnsonandjones.co.uk

Gordon Drive
Chertsey, Surrey

Johnson & Jones

27 Gordon Drive Chertsey, KT16 9PP

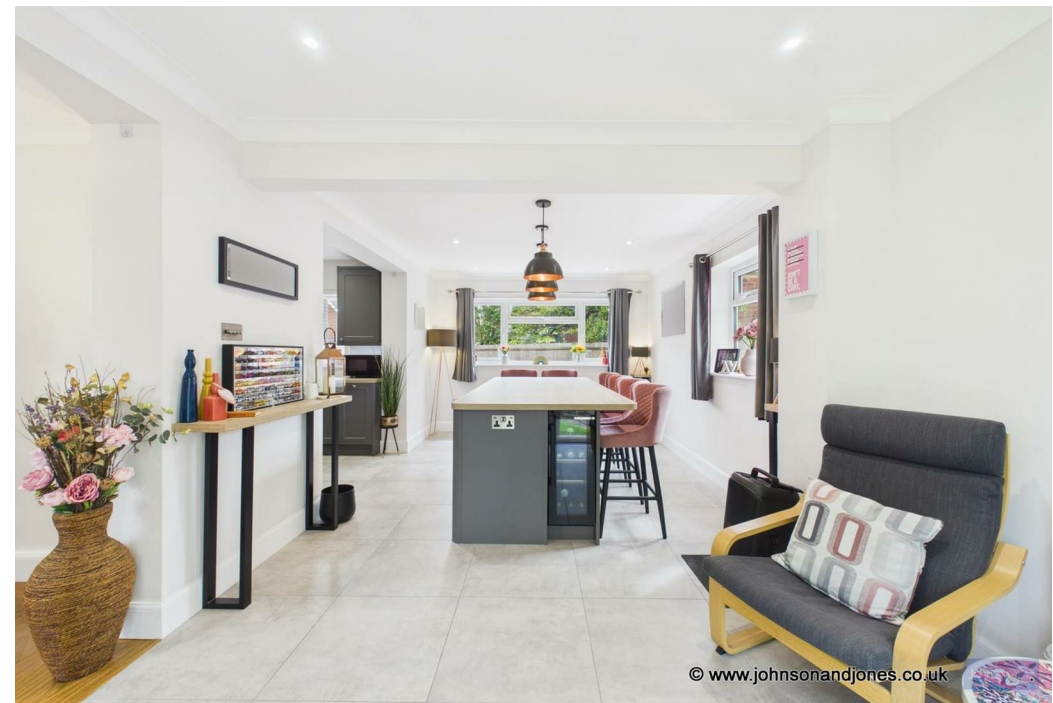
Guide Price £850,000

Tucked away in a tranquil corner of a premier cul-de-sac within highly sought-after Chertsey South, this masterfully renovated detached residence offers a truly sophisticated family lifestyle. The property makes a striking first impression with a sprawling driveway providing parking for several vehicles, further complemented by a substantial detached double garage. Upon entering, the home reveals a series of fluid, light-filled reception areas that strike a perfect balance between contemporary elegance and domestic comfort.

At the heart of the home lies a breath-taking open-plan kitchen and dining suite, meticulously designed to wrap around a high-specification culinary hub featuring integrated appliances. An expansive central island serves as the social anchor of the room, while windows on three sides bathe the dining area in natural light from dawn until dusk. For seamless entertaining, sets of French doors from both the kitchen and the formal lounge transition effortlessly to the grounds. The lounge itself is a masterclass in modern luxury, centred around a bespoke, app-controlled fireplace and an integrated media unit, all set against the timeless backdrop of exquisite hardwood herringbone flooring.

The upper floor continues to impress with four generously proportioned double bedrooms, including a sanctuary-like master suite complete with a luxurious walk-in shower room. The remaining bedrooms are served by a family bathroom featuring a classic white three-piece suite with an overhead shower, while a dedicated first-floor laundry room and a ground-floor guest cloakroom add essential practical touches. The interior aesthetic is further elevated by large-format porcelain tiles that sweep through the kitchen and dining spaces, reflecting the home's high-calibre finish.

Outside, the large, sun-drenched rear garden enjoys a favoured westerly aspect, framed by a mature tree line that ensures a high degree of privacy and serenity. Internal inspection is a must!





© www.johnsonandjones.co.uk Johnson & Jones



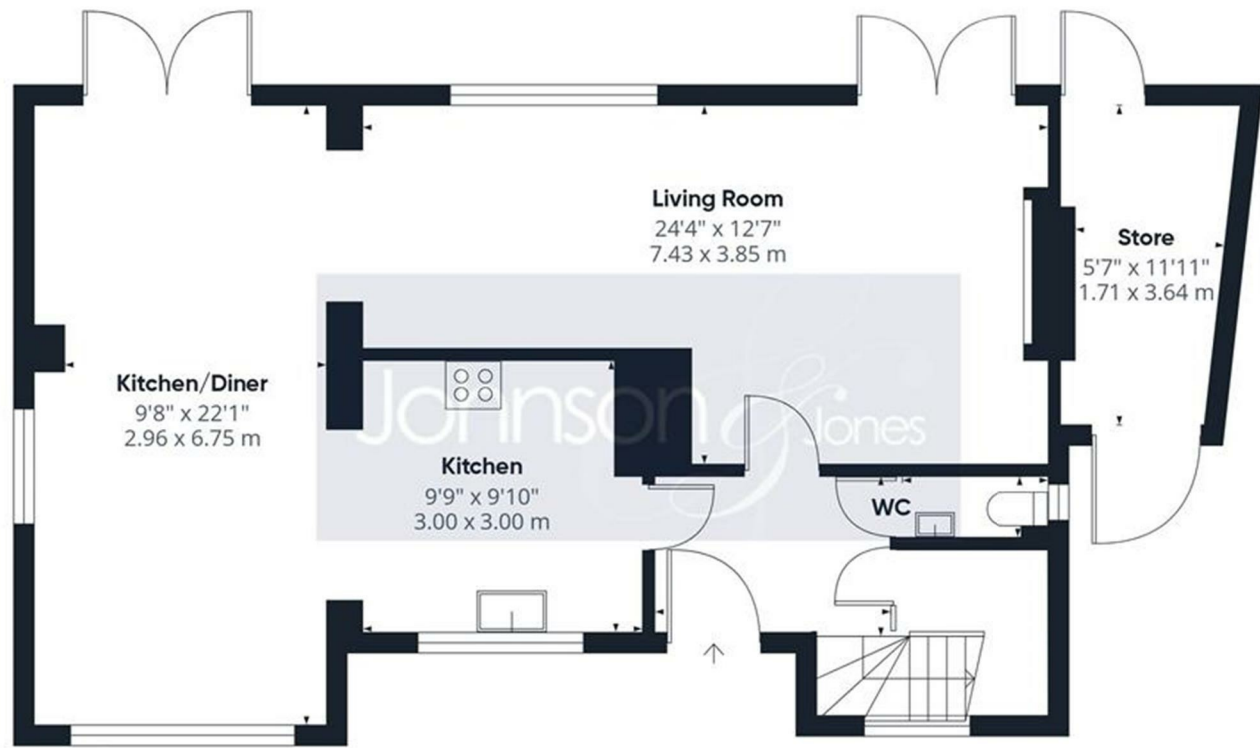
© www.johnsonandjones.co.uk Johnson & Jones



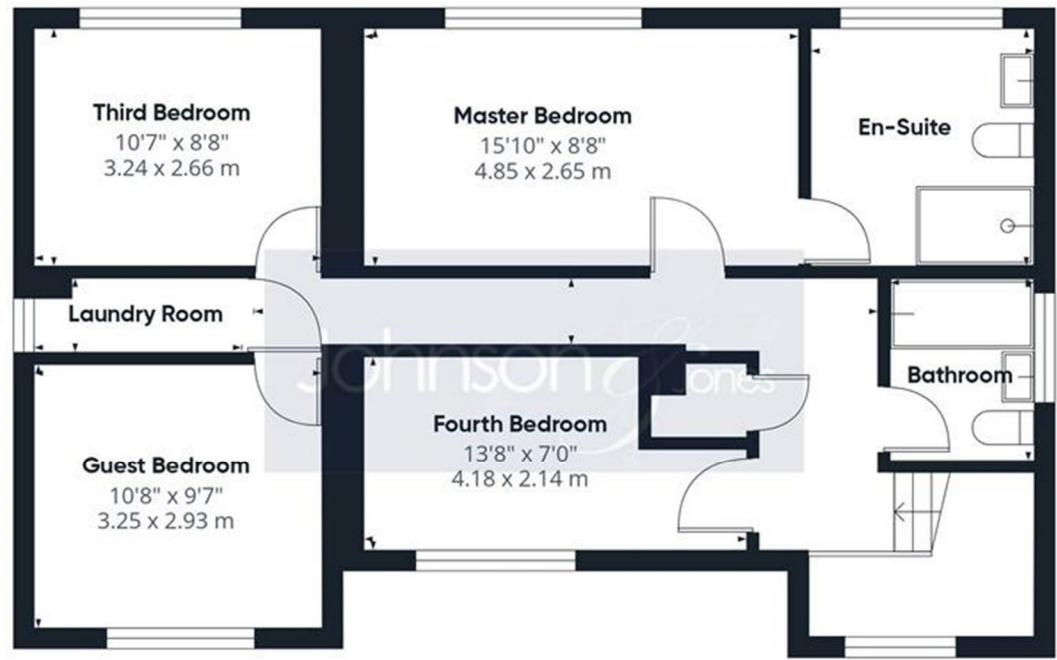
© www.johnsonandjones.co.uk Johnson & Jones



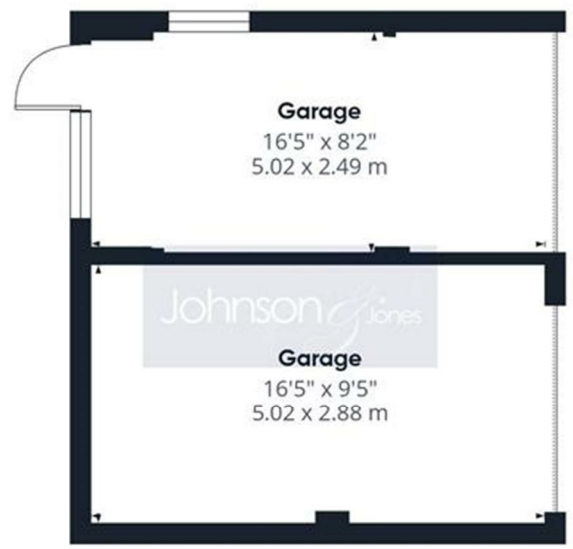
© www.johnsonandjones.co.uk Johnson & Jones



Floor 0 Building 1



Floor 1 Building 1



Floor 0 Building 2

Approximate total area⁽¹⁾
1709 ft²
158.6 m²

(1) Excluding balconies and terraces

Calculations reference the RICS IPMS 3C standard. Measurements are approximate and not to scale. This floor plan is intended for illustration only.



10 London Street, Chertsey
Surrey, KT16 8AA

Johnson & Jones