



01932 560777
johnsonandjones.co.uk

Lyndhurst Way
Chertsey, Surrey

Johnson & Jones

13 Lyndhurst Way Chertsey, KT16 9PL

Guide Price £535,000

Tucked away at the end of a whisper-quiet cul-de-sac in the prestigious enclave of Chertsey South, this detached bungalow offers a rare blend of sophisticated single-level living and enchanting outdoor charm. Offered with the seamless advantage of no onward chain, the residence welcomes you with an immediate sense of peace and privacy, making it an exquisite sanctuary for those seeking a slower pace of life without sacrificing elegance.

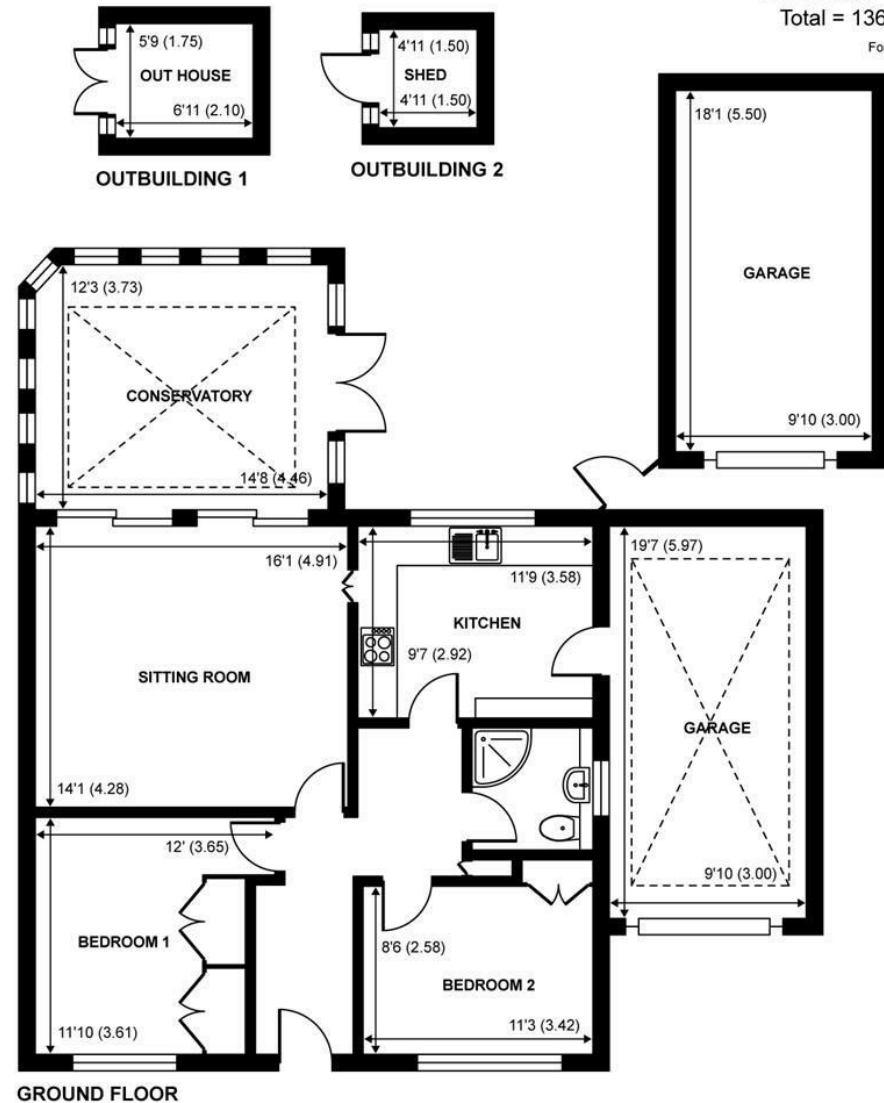
The heart of the home is a light-filled reception room designed for both relaxation and refined entertaining. This inviting space flows effortlessly into a generous conservatory, a glass-walled retreat that blurs the lines between indoors and out, offering a picturesque vantage point over the grounds regardless of the season. Adjacent, the kitchen is a bright and airy workspace, featuring classic white cabinetry and a perfectly positioned window that frames views of the verdant rear garden.

The sleeping quarters are equally impressive, consisting of two expansive double bedrooms situated at the front of the home. Both rooms are bathed in natural light and benefit from bespoke fitted storage, ensuring a sleek and tranquil environment. These are served by a pristine, modern shower room finished with a crisp white suite that emphasizes the home's polished feel.

Stepping outside, the property reveals its crowning jewel: a beautifully established, southwest-facing garden. This sun-drenched oasis is a masterclass in outdoor living, featuring a charming summer house that serves as a perfect hobby studio or reading nook, alongside a practical shed for garden essentials. The exterior is completed by a manicured front garden and a private driveway leading to a secure carport and garage, providing exceptional space for vehicles and storage. This is a rare opportunity to acquire a home of genuine character and comfort in one of the area's most sought-after locations.

Approximate Area = 925 sq ft / 85.9 sq m
Garages = 371 sq ft / 34.4 sq m
Outbuildings = 64 sq ft / 5.9 sq m
Total = 1360 sq ft / 126.2 sq m

For identification only - Not to scale



 Floor plan produced in accordance with RICS Property Measurement 2nd Edition, Incorporating International Property Measurement Standards (IPMS2 Residential). © nchecom 2025. Produced for Simpsons Estate Agents ta Curchods. REF: 1296520

Disclaimer: Johnson and Jones Estate Agents cannot verify that the equipment, apparatus, fittings or services within this property are in working order, as they have not tested the relevant items. The buyer is advised to obtain verification from the solicitor dealing with the conveyancing or survey.





10 London Street. Chertsey
Surrey. KT16 8AA

Johnson & Jones