



01932 560777
johnsonandjones.co.uk

Cowper Close
Chertsey,

Johnson & Jones

37 Cowper Close Chertsey, KT16 9EA

Guide Price £525,000

Tucked away at the end of a peaceful cul-de-sac surrounded by a mature treeline, this exquisite 1,100 square foot end-terrace house is far more than a standard family home—it is a meticulously curated retreat. Every inch of the property has been thoughtfully upgraded to blend modern luxury with a deep sense of comfort, beginning with a dual-aspect lounge that serves as a masterclass in cozy elegance. Here, the soft light through plantation shutters and the glow of the feature fireplace create an immediate sense of home.

The heart of the residence is a breathtaking open-plan kitchen and dining space, where sleek marble worktops and integrated appliances meet high-end design. This room is a celebration of light and flow, featuring French doors at both ends that dissolve the boundaries between the interior and the outdoors. Whether you are hosting a lively dinner party or enjoying a quiet morning coffee, the seamless connection to both a secluded front courtyard and a sprawling rear garden offers a lifestyle of effortless indoor-outdoor living.

The first floor has three spacious bedrooms and is served by a striking family bathroom featuring a centrepiece freestanding bathtub. However, the true showstopper is the ground-floor master suite—a private sanctuary designed for total relaxation. This expansive room easily accommodates a super-king bed, and hidden behind a rustic sliding barn door is a spa-like en-suite with a massive walk-in shower. It is a unique, multi-use space that could just as easily serve as a high-end home office, a private gym, or a sophisticated additional reception room.

Framed by upgraded anthracite windows and warmed by stylish column radiators, the home feels contemporary and substantial. The garden is a rare find, wrapping around the house to provide an expansive, private haven away from the hustle and bustle. Offered chain-free and finished to an exacting standard, this is a remarkable opportunity to secure a stylish, soulful residence.

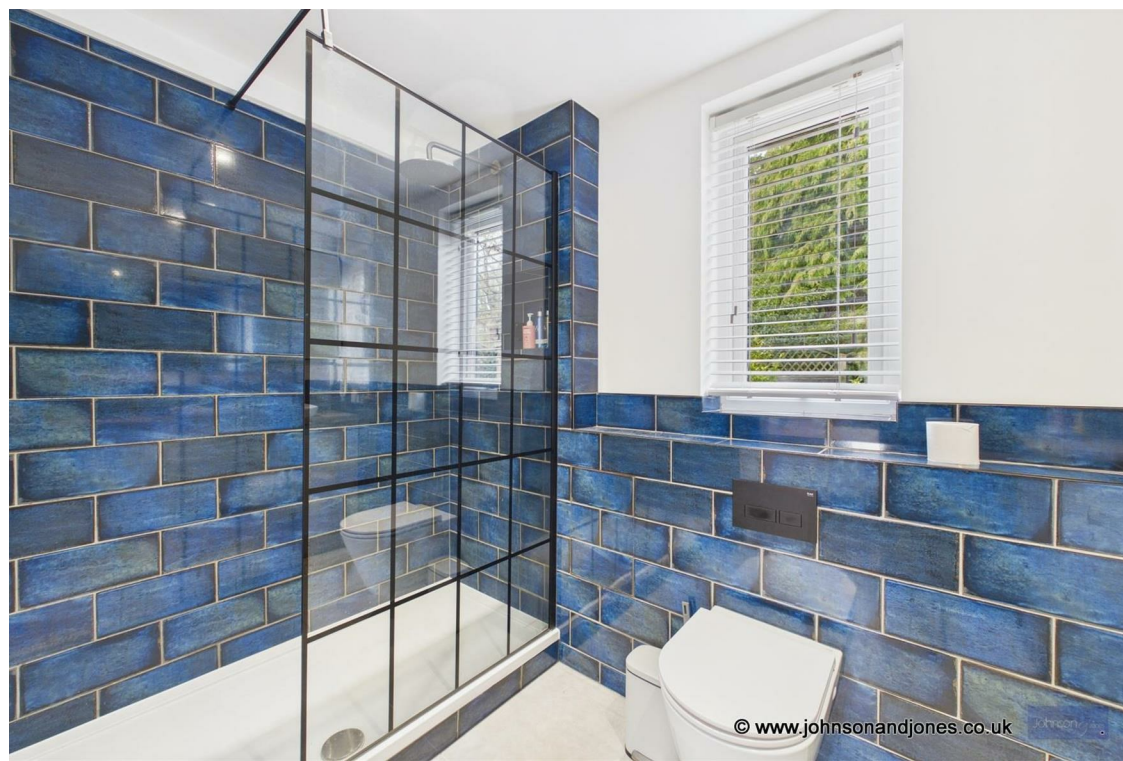


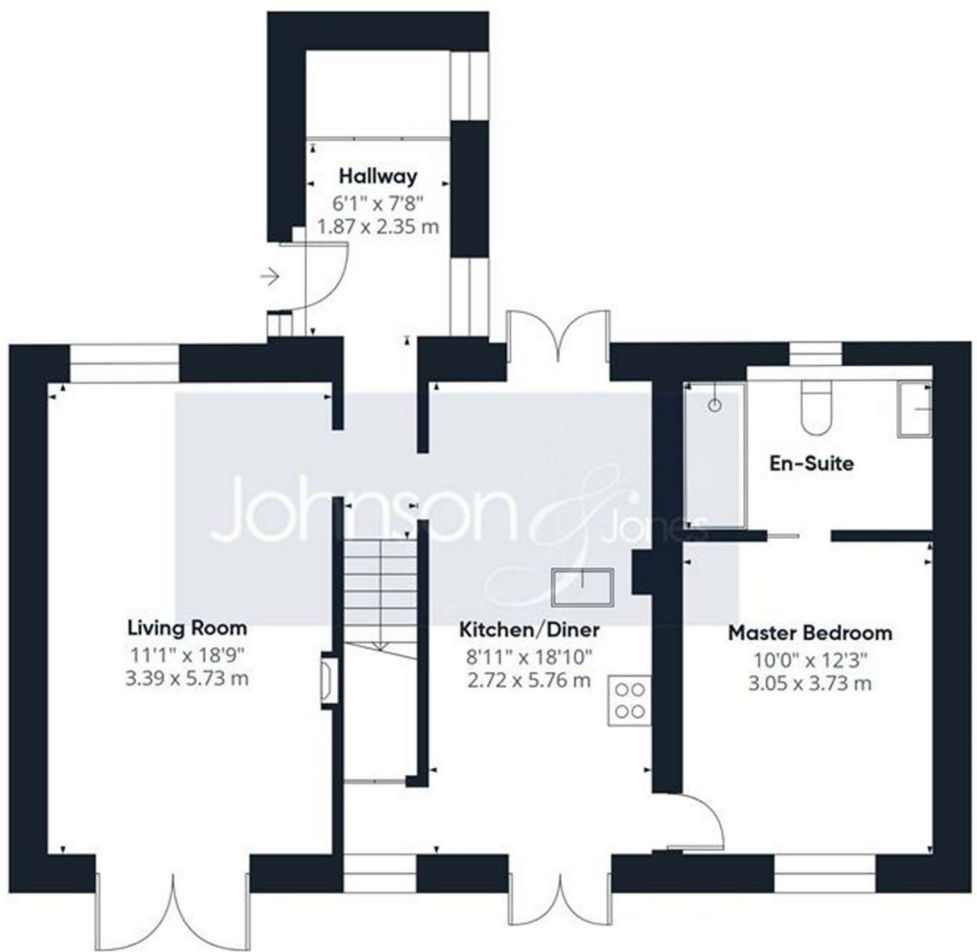
© www.johnsonandjones.co.uk



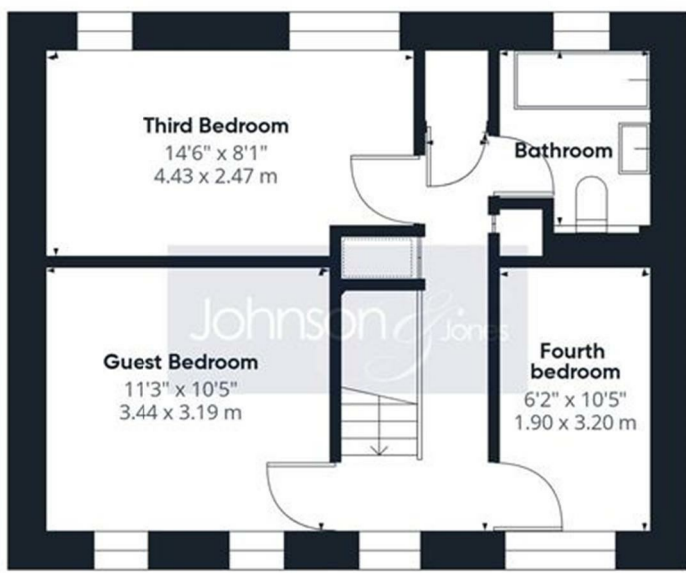
© www.johnsonandjones.co.uk

Disclaimer: Johnson and Jones Estate Agents cannot verify that the equipment, apparatus, fittings or services within this property are in working order, as they have not tested the relevant items. The buyer is advised to obtain verification from the solicitor dealing with the conveyancing or survey.





Floor 0



Floor 1

Approximate total area⁽¹⁾
1100 ft²
102.1 m²

(1) Excluding balconies and terraces

Calculations reference the RICS IPMS 3C standard. Measurements are approximate and not to scale. This floor plan is intended for illustration only.





10 London Street, Chertsey
Surrey, KT16 8AA

Johnson & Jones