



01932 560777
johnsonandjones.co.uk

4 - 10 Guildford Road
Chertsey, Surrey

Johnson & Jones

**Flat 8 Galleon House 4 - 10 Guildford
Road
Chertsey, KT16 9HH**

£1,300 PCM

Galleon House is located a stone's throw from Chertsey Mainline Railway Station, with the Town Centre just a few moments further with its eclectic mix of boutique shops, bars and restaurants.

This one bedroom apartment comprises a well proportioned, open plan reception room with a contemporary high gloss kitchen and integrated appliances included. There is also a luxury shower room with tiled walls and a double bedroom with a storage cupboard and ample space for wardrobes.

Externally there is a communal garden to enjoy during the summer months and a car park with one allocated parking space for the flat.

Available - Saturday 28th February

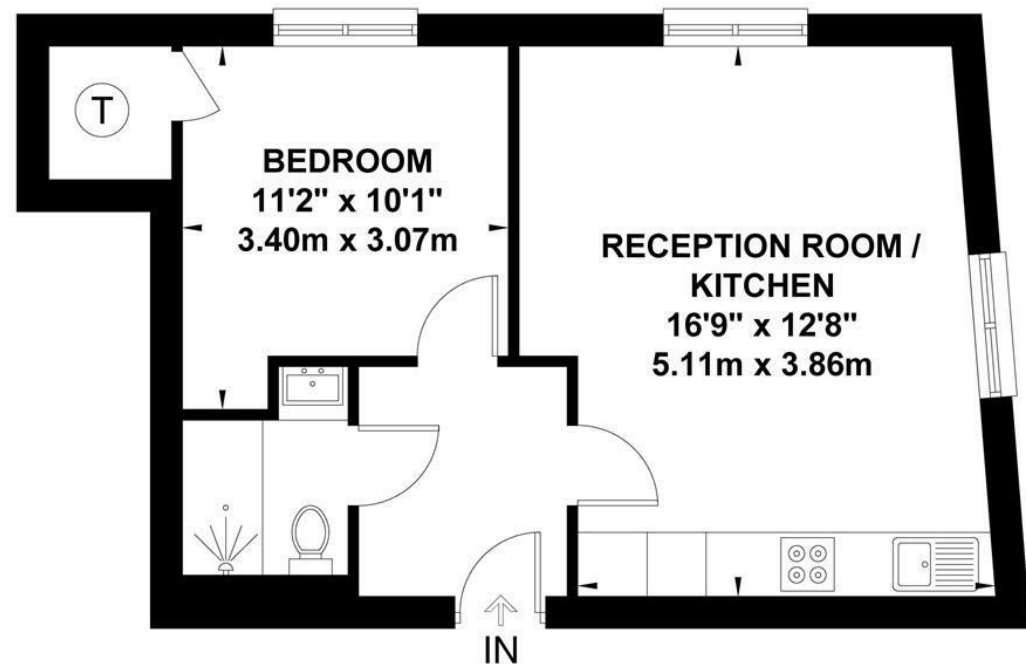
Deposit - £1,500

Council Tax - Band B - £1,851.16

EPC - B Rating - 85

Guildford Street, Chertsey

Approximate Gross Internal Area = 39.3 sq m / 423 sq ft



Whilst every attempt has been made to ensure the accuracy of this floor plan, measurements of doors, windows and rooms are approximate and no responsibility is taken for any error or omission. This illustration is for identification purpose only. Measured and drawn accordance with RICS guidelines. Not drawn to scale, unless stated. Dimensions shown are to the nearest 3" and are to the points indicated by the arrow heads.



www.johnsonandjones.co.uk



www.johnsonandjones.co.uk



www.johnsonandjones.co.uk



www.johnsonandjones.co.uk



10 London Street. Chertsey
Surrey. KT16 8AA

Johnson & Jones