



01932 560777
johnsonandjones.co.uk

4-10 Guildford Road
Chertsey, Surrey

Johnson & Jones

Flat 2 Galleon House 4-10 Guildford Road Chertsey, KT16 9HH

£1,250 PCM

Galleon House is a luxury development comprising of high specification one bedroom apartments, located a stone's throw from Chertsey Mainline Railway Station, with the Town Centre just a few moments further with its eclectic mix of boutique shops, bars and restaurants.

Accommodation includes a large open plan living space with high gloss units and integrated kitchen appliances, a well proportioned double bedroom with a storage cupboard and a shower room with luxury tiling. There is LED lighting throughout the property along with wooden floors and neutral decor.

Accessed from the rear the development it has a welcoming entrance with a secure intercom system and a communal garden to enjoy during the summer months.

Available Date - Saturday 21st February

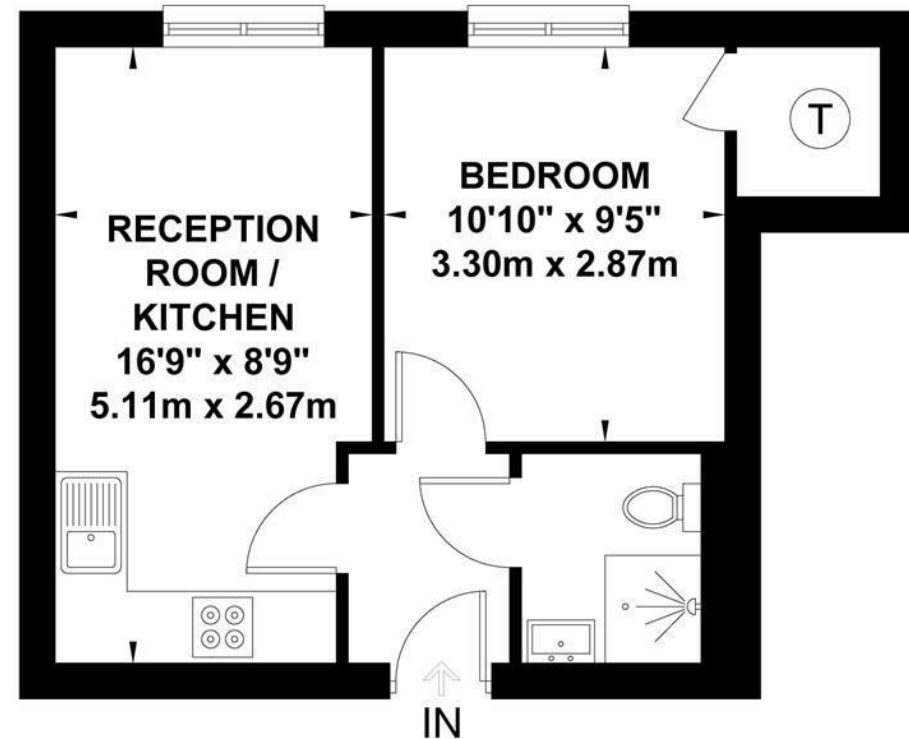
Deposit - £1,442

Council Tax - Band B - £1,851.16

EPC - B Rating - 84

Guildford Street, Chertsey

Approximate Gross Internal Area = 33.1 sq m / 356 sq ft



Whilst every attempt has been made to ensure the accuracy of this floor plan, measurements of doors, windows and rooms are approximate and no responsibility is taken for any error or omission. This illustration is for identification purpose only. Measured and drawn accordance with RICS guidelines. Not drawn to scale, unless stated. Dimensions shown are to the nearest 3" and are to the points indicated by the arrow heads.



