



Flat 6, Latitude House Oval Road, London, NW1 7EU

Carter Reeves is proud to present this stunning two bedroom apartment situated in the heart of Camden. The property is fully furnished.

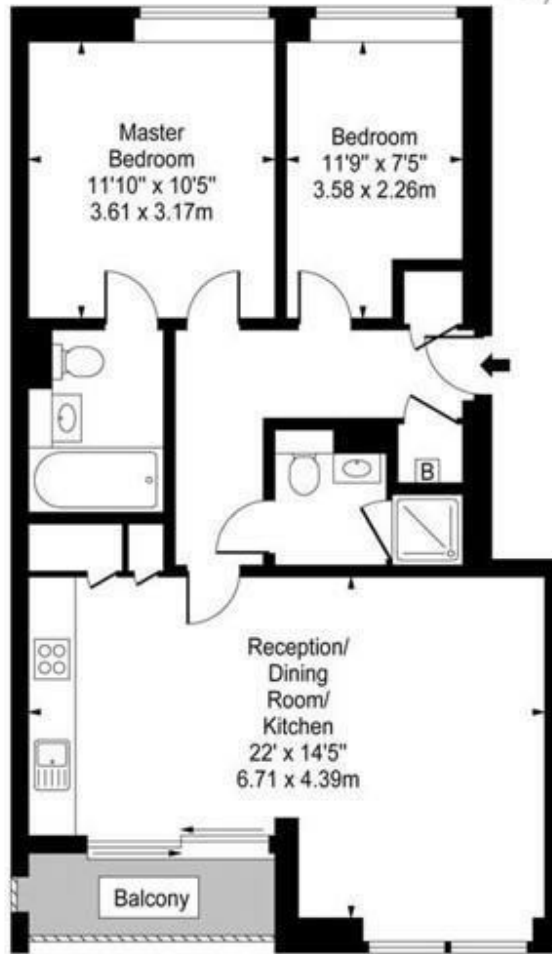
The property has glass and limestone of the exterior and carry's through into the apartments. Each one is finished with the highest quality natural materials. For doors, the subtle graining of walnut timber has been used, to catch the natural light coming through the floor-to-ceiling windows, creating a simple, warm feel to the interiors.

Bathroom floors are in limestone and the walls are set in stylish frosted white glass with backlit mirrors. Bright, practical kitchens are finished with white lacquered units with integrated appliances.

Please call our Carter Reeves Lettings to view the property on 0207 278 9444.

£3,011 Per month

Latitude House,
Oval Road,
Primrose Hill



First Floor

Gross Internal Area - 708 Sq Ft - 65.77 Sq M

Approx Gross Internal Area **708 Sq Ft - 65.77 Sq M**
For Illustration Purposes Only - Not To Scale

Energy Efficiency Rating		Current	Potential
Very energy efficient - lower running costs			
(92 plus) A			
(81-91) B			
(69-80) C			
(55-68) D			
(39-54) E			
(21-38) F			
(1-20) G			
Not energy efficient - higher running costs			
England & Wales	EU Directive 2002/91/EC		

Environmental Impact (CO ₂) Rating		Current	Potential
Very environmentally friendly - lower CO ₂ emissions			
(92 plus) A			
(81-91) B			
(69-80) C			
(55-68) D			
(39-54) E			
(21-38) F			
(1-20) G			
Not environmentally friendly - higher CO ₂ emissions			
England & Wales	EU Directive 2002/91/EC		

CONTACT
298 Grays Inn Road
London
WC1X8DX
Email: lettings@carterreeves.co.uk
Phone: 0207 278 9444
www.carterreeves.co.uk

IMPORTANT NOTICE
Descriptions of the property are subjective and are used in good faith as an opinion and NOT as a statement of fact. Please make further enquiries to ensure that our descriptions are likely to match any expectations you may have of the property. We have not tested any services, systems or appliances at this property. We strongly recommend that all the information we provide be verified by you on inspection, and by your Surveyor and Conveyancer.