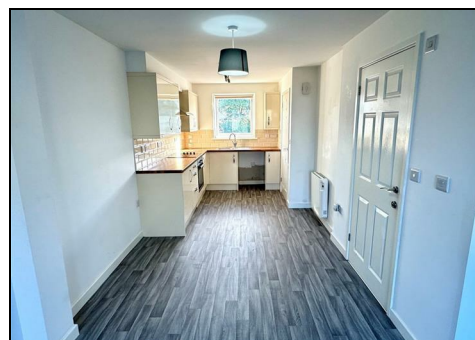


3 Palm Court , St. Columb, TR9 6QU




Mid-terrace 2 bedroom house in Fraddon.

£795 PCM



The property is unfurnished and is available from early January for 12 months. The deposit is equivalent to a month's rent.

To arrange a viewing on this or any of our other properties please complete the Tenancy Application Form on the Start and Co home page at starts.co.uk.

Energy Efficiency Rating		
	Current	Potential
Very energy efficient - lower running costs		
(92 plus) A		
(81-91) B		
(69-80) C		
(55-68) D		
(39-54) E		
(21-38) F		
(1-20) G		
Not energy efficient - higher running costs		
England & Wales	EU Directive 2002/91/EC	

Environmental Impact (CO ₂) Rating		
	Current	Potential
Very environmentally friendly - lower CO ₂ emissions		
(92 plus) A		
(81-91) B		
(69-80) C		
(55-68) D		
(39-54) E		
(21-38) F		
(1-20) G		
Not environmentally friendly - higher CO ₂ emissions		
England & Wales	EU Directive 2002/91/EC	