

Ocean Gate, Esplanade Road, Newquay, Cornwall TR7 1PY



SEA VIEWS FROM THE APARTMENT AND PRIVATE TERRACE | 2 MINUTES STROLL FROM FISTRAL BEACH | Unique 3 bedroom, 3 bathroom ground floor apartment with sea views from the large open plan living area and 500sqft terrace.

- High specification and Immaculately presented throughout
- Spacious rooms throughout all with fitted wardrobes
- Designated parking space & Private store room
- Stunning Beach, Sea and Golf Course views
- Underfloor gas c/h and double glazing with a new bi-opening door to the terrace
- Private "sole use" entrance door
- Highly Individual and interesting circular design
- 500sqft PRIVATE enclosed patio with Sea Views and storage

Price £565,000 Leasehold

Located on the doorstep of Fistral Beach and just 2 minutes walk to the River Gannel, this apartment offers 2 contrasting experiences, it's great for all the family. Fistral Beach offers world class surfing waves with the Fistral complex offering surf hire and the very popular Beach Bar. The Gannel is idyllic and tranquil ideal for an evening BBQ, kayak or paddle board with all the family. Newquay town centre and local amenities are all within easy reach.

This apartment is highly individual and is suited to full time residential equally to a fantastic holiday home or let. From a private generous front terrace, you enter into the open plan lounge/kitchen/diner. A light washed engineered oak flooring throughout provides beachside feel with views over the terrace and out to sea. This unique space provides ample room for a designated lounge and dining area and the current owners enhanced the open plan nature by adding a bi-opening door unit from the lounge to the terrace.

The apartment has 3 double bedrooms all with fitted wardrobes with 2 en-suites and a family bathroom. All the bathrooms are finished to a very high standard with floor to ceiling tiles, large integrated mirrors, concealed cistern WC's and wall mounted basins.

The apartment is presented in fantastic condition and is a must see for anyone who is looking for a 'bare foot' stroll to one of the UK's favorite beaches!

LIVING ROOM

35'11 x 20'6 (10.95m x 6.25m)

INNER HALL

9'1 x 7'3 (2.77m x 2.21m)

MASTER BEDROOM

20'3 x 16'2 (6.17m x 4.93m)

EN-SUITE

10'10 x 6'5 (3.30m x 1.96m)

BEDROOM 2

21'5 x 9'2 (6.53m x 2.79m)

EN-SUITE SHOWER ROOM

9'4 x 7' (2.84m x 2.13m)

BEDROOM NO.3

20'7 x 12'3 (6.27m x 3.73m)

BATHROOM

9'4 x 6'5 (2.84m x 1.96m)

THE SUNSET PATIO - 539 SQ FT (50 SQM)

OUTSIDE & COMMUNAL

Single designated car parking space a short walk from the front door with three shared visitor spaces nearby (first come, first served). Private lockable store room (not cage) in lower ground floor car park suitable for bikes/boards or general storage

TENURE

Leasehold. 999 Year lease from 24/6/2011. The annual maintenance payment is currently set at £6307.46 (Jan-Dec 2025) and the ground rent is £350 per annum. Pets are permitted in the block, with the written approval of the management company. Holiday letting is permitted.

COUNCIL TAX

Band E

SERVICES

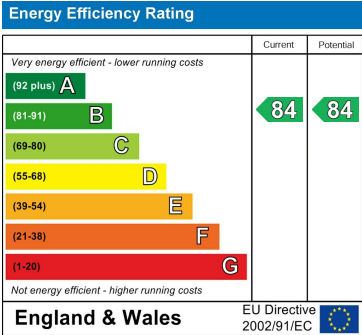
All mains

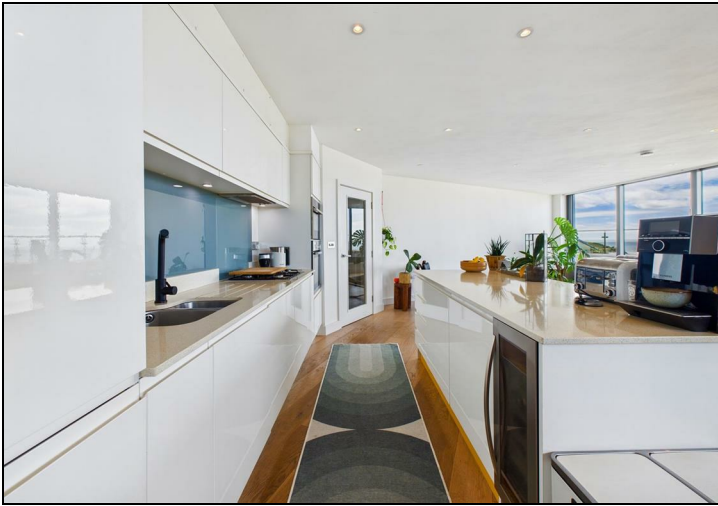
MOBILE & BROADBAND COVERAGE

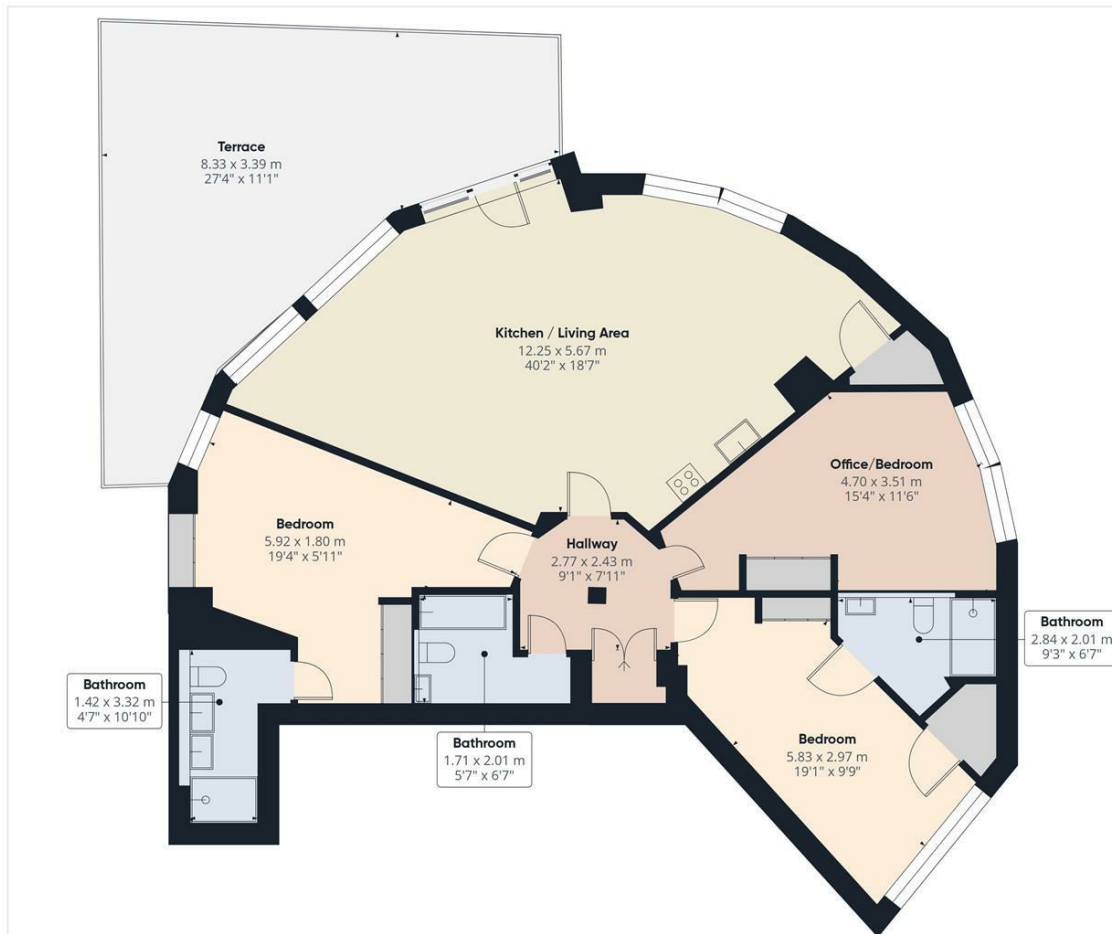
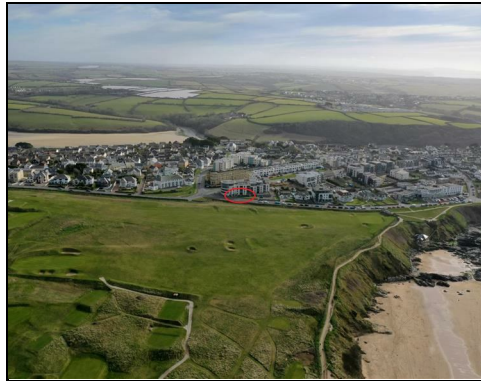
Superfast: up to 80 Mbs

Mobile Signal: Limited

(Source: OFCOM)







Approximate total area⁽¹⁾

129.4 m²
1395 ft²

Balconies and terraces

40.4 m²
435 ft²

(1) Excluding balconies and terraces

Calculations reference the RICS IPMS 3C standard. Measurements are approximate and not to scale. This floor plan is intended for illustration only.

GIRAFFE360

Start & co

THE NEWQUAY ESTATE AGENT
www.starts.co.uk

12a Cliff Road
Newquay
TR7 2NE
Tel: 01637 875847
sales@starts.co.uk