

## Phase 6, Prow Park, Treloggan Industrial Estate, Newquay, TR7 2SX



**UNDER CONSTRUCTION | PRICE ON APPLICATION | New commercial units at Prow Park - floor area ranging from 2,700 sq ft to 13,500 sq ft over ground and first floor spaces.**

- Units to let - varying sizes
- Phase 6 units from 2,700 sq ft to 13,500 sq ft over ground and first floor
- Popular industrial estate at Treloggan
- Exciting opportunity for local businesses
- Register interest now!
- Ample car parking

**Prices from £1,300 plus VAT**

area is home to a diverse mix of businesses, fostering a dynamic environment that encourages collaboration and growth.

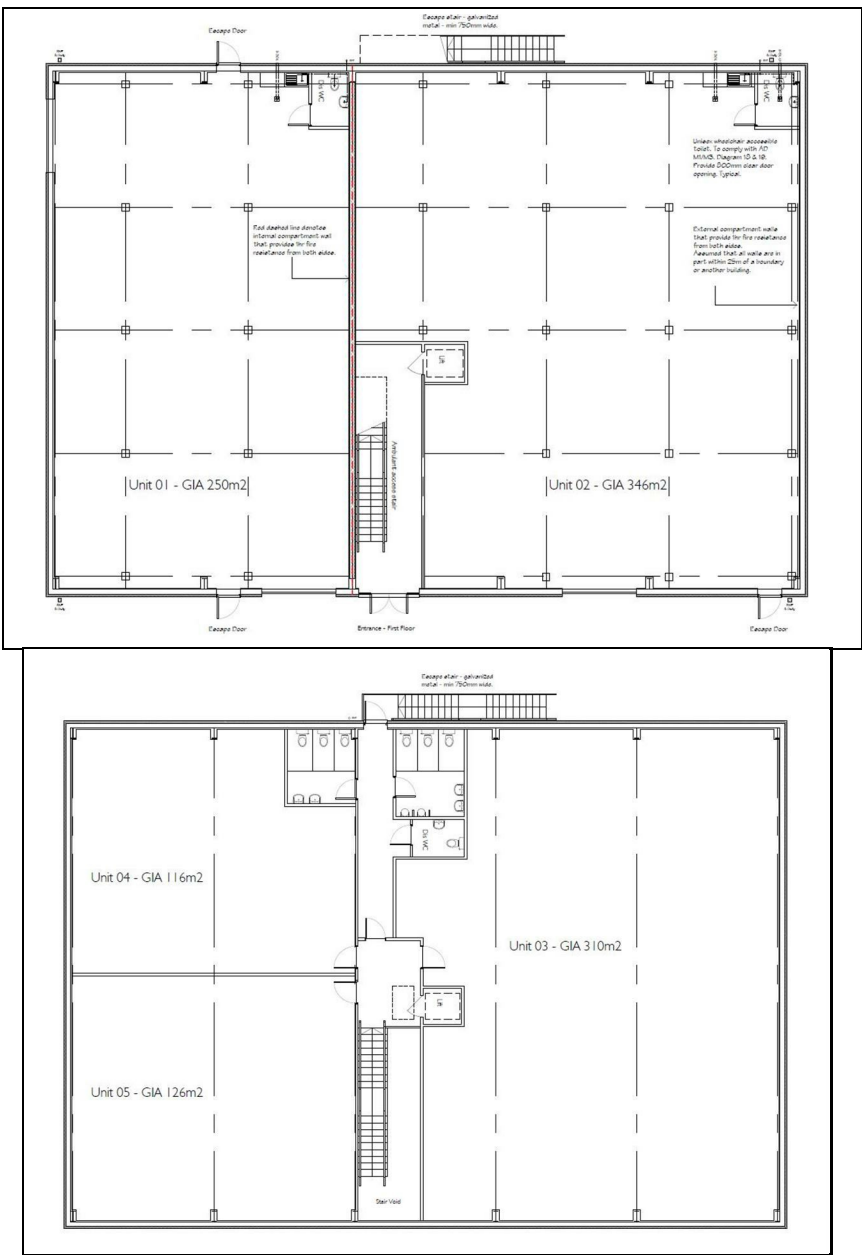
Newquay, known for its stunning beaches and vibrant tourism, also boasts a strong local economy, making this location particularly advantageous for businesses looking to thrive. The Treloggan Industrial Estate is well-regarded for its accessibility and supportive business community, ensuring that your venture will be well-positioned for success.

The commercial space at Prow Park is designed to accommodate a range of business needs, providing a flexible layout that can be tailored to suit your specific requirements. With ample square footage, the property allows for both operational efficiency and the potential for future expansion. The surrounding

Whether you are looking to establish a new business or expand an existing one, Prow Park offers a unique opportunity to secure a prominent commercial space in a sought-after location. Do not miss the chance to be part of this thriving area; arrange a viewing today to explore the potential that Prow Park has to offer.

## LEASE

More information available on request.



**Start & co**  
THE NEWQUAY ESTATE AGENT  
[www.starts.co.uk](http://www.starts.co.uk)

12a Cliff Road  
Newquay  
TR7 2NE  
Tel: 01637 875847  
sales@starts.co.uk