



MILE

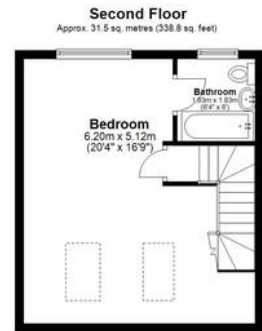
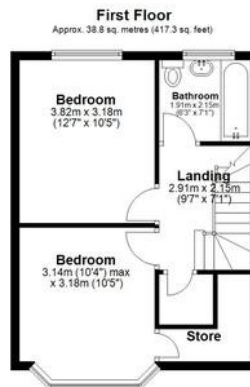
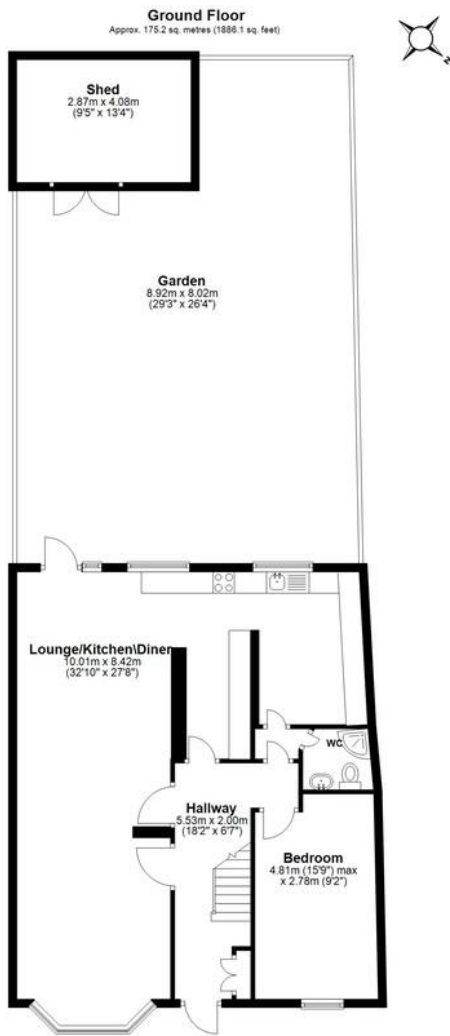


Princes Avenue, London £3,500 pcm %tenure%

Mile are delighted to offer this newly refurbished four-bedroom residence, finished to a high standard throughout and ideally located on Princes Avenue in Colindale.

The property offers generous living space and comprises a bright and spacious reception room, perfect for both relaxing and entertaining, alongside a contemporary fitted kitchen complete with integrated appliances and ample storage. The home further benefits from four well-proportioned bedrooms, providing excellent accommodation for families, as well as three sleek, fully tiled bathrooms.

- Newly refurbished throughout
- Finished to a high standard
- Spacious and bright reception room
- Driveway providing off-street parking
- Large private rear garden
- Fully Fitted kitchen
- Close to local shops and amenities
- Good access to public transport
- Available Now
- EPC Rating C



Total area: approx. 245.5 sq. metres (2642.2 sq. feet)

This floor plan has been created by a third party and should be used as a general outline for guidance only. Any areas, measurements or distances quoted are approximate and any intending purchaser or lessee should satisfy themselves by inspection, searches, enquiries and/or full survey as to the correctness of each statement. We accept no responsibility or liability for any loss whatsoever that may arise as a result of this plan and the information contained within.

© (@modphoto) | www.modphoto.co.uk
Plan produced using Plankip ©

Princess Avenue

MONEY LAUNDERING REGULATIONS 2003: Intending purchasers will be asked to produce identification documentation at a later stage and we would ask for your co-operation in order that there will be no delay in agreeing the sale.

General: While we endeavour to make our sales particulars fair, accurate and reliable, they are only a general guide to the property and, accordingly, if there is any point which is of particular importance to you, please contact the office and we will be pleased to check the position for you, especially if you are contemplating travelling some distance to view the property.

Measurements: These approximate room sizes are only intended as general guidance. You must verify the dimensions carefully before ordering carpets or any built-in furniture.

Services: Please note we have not tested the services or any of the equipment or appliances in this property, accordingly we strongly advise prospective buyers to commission their own survey or service reports before finalising their offer to purchase.