



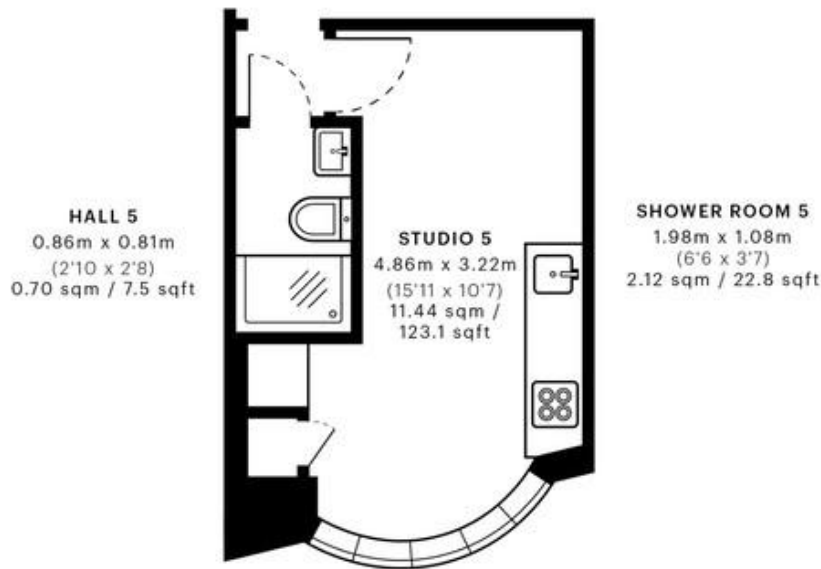
North End Road, London

£1,300 pcm %tenure%

Mile are pleased to offer this **NEWLY** built SUPER BEDSIT for rent!! Consists of a double bed, built in wardrobes and fully fitted kitchen including a washer/dryer.. Finished to a high specification! The property is located **RIGHT OPPOSITE** Golders Green Station! Available 15th September 2025

ALL BILLS INCLUDED (INCLUDING INTERNET) EPC RATING D.

- MODERN
- Private Kitchen
- Right opposite Golders Green Station
- Close to shops
- **MUST BE SEEN!!**
- Available 15th September
- Internet Included
- **ALL BILLS INCLUDED**
- EPC Rating D
-



— Ground Floor



GROSS INTERNAL AREA (GIA)
The footprint of the property

14.90 sqm / 160.38 sqft



NET INTERNAL AREA (NIA)
Excludes walls and external features
Includes washrooms, restricted head height

14.26 sqm / 153.49 sqft



EXTERNAL STRUCTURAL FEATURES
Balconies, terraces, verandas etc.

0.00 sqm / 0.00 sqft



RESTRICTED HEAD HEIGHT
Limited use area under 1.5 m

0.00 sqm / 0.00 sqft