



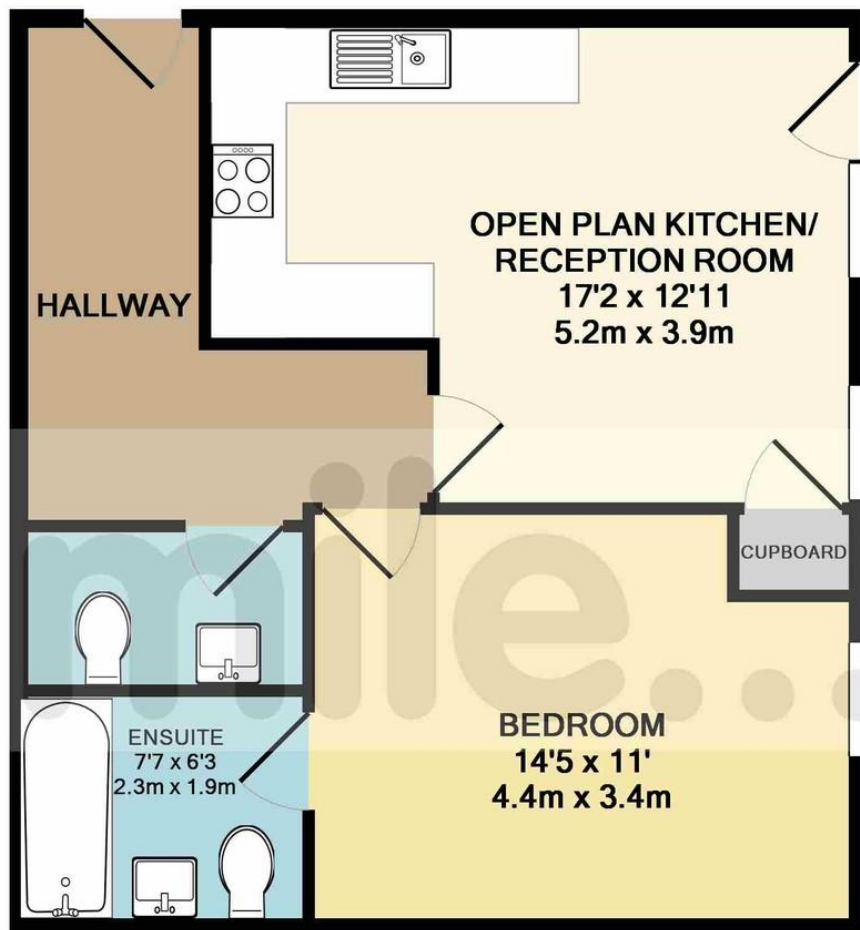
Shenley Road, Borehamwood, Herts WD6

£270,000 Leasehold

Help to Buy Scheme

Mile is delighted to bring to the market this wonderful one bedroom newly built apartment set on the first floor. The apartment comprises one bedroom, one modern en suite bathroom, guest WC, large reception room with hard wood flooring, open plan modern fitted kitchen with integrated appliances and parking space available. The property is located on Shenley Road within walking distance of local shops, bars and restaurants, TESCO SUPERSTORE, Borehamwood's BOULEVARD SHOPPING CENTRE and REEL CINEMA as well as BOREHAMWOOD mainline STATION and BUS TRANSPORT. Chain Free!

- One bedroom
- One en suite bathroom
- Large reception room
- Modern open-plan integrated kitchen
- Help to Buy Scheme
- Parking space available
- Fantastic location
- Close to Tesco superstore
- Walking distance to Mainline station
- Opposite Boulevard shopping



TOTAL APPROX. FLOOR AREA 527 SQ.FT. (49.0 SQ.M.)

Whilst every attempt has been made to ensure the accuracy of the floor plan contained here, measurements of doors, windows, rooms and any other items are approximate and no responsibility is taken for any error, omission, or mis-statement. This plan is for illustrative purposes only and should be used as such by any prospective purchaser. The services, systems and appliances shown have not been tested and no guarantee as to their operability or efficiency can be given

Made with Metropix ©2018

MONEY LAUNDERING REGULATIONS 2003: Intending purchasers will be asked to produce identification documentation at a later stage and we would ask for your co-operation in order that there will be no delay in agreeing the sale.

General: While we endeavour to make our sales particulars fair, accurate and reliable, they are only a general guide to the property and, accordingly, if there is any point which is of particular importance to you, please contact the office and we will be pleased to check the position for you, especially if you are contemplating travelling some distance to view the property.

Measurements: These approximate room sizes are only intended as general guidance. You must verify the dimensions carefully before ordering carpets or any built-in furniture.

Services: Please note we have not tested the services or any of the equipment or appliances in this property, accordingly we strongly advise prospective buyers to commission their own survey or service reports before finalising their offer to purchase.