



MILE



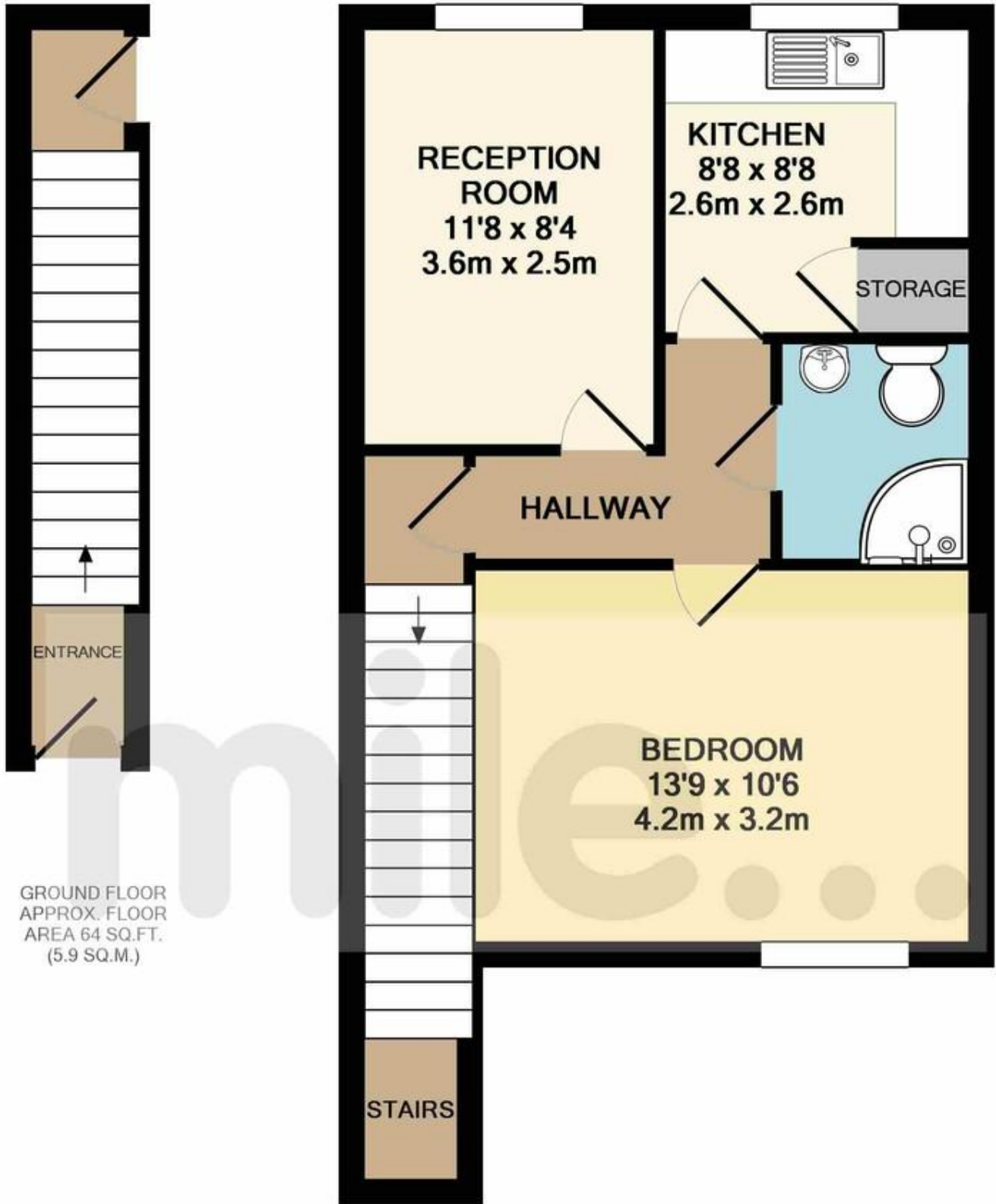
Booth Road, Colindale, London NW9
£1,500 pcm %tenure%

*** Sole Agents ***

Mile Estates is delighted to bring to the market this maisonette set on the first floor of this small development. The property comprises of one bedroom, reception room, shower room and kitchen and also benefits from an off street parking space and private garden. The property is located on Booth Road between Montrose Road and Colindale Avenue within easy walking distance of Colindale (Northern line) station and local shops of Colindale and Burnt Oak.

Available end of June

- One bedroom
- Maisonette
- Available end of June
- Off street parking
- Private garden
- Close to shops
- Close to transport
- Fantastic location
-
-



GROUND FLOOR
APPROX. FLOOR
AREA 64 SQ.FT.
(5.9 SQ.M.)

1ST FLOOR
APPROX. FLOOR
AREA 449 SQ.FT.
(41.7 SQ.M.)

TOTAL APPROX. FLOOR AREA 512 SQ.FT. (47.6 SQ.M.)

MONEY LAUNDERING REGULATIONS 2003: Intending purchasers will be asked to produce identification documentation at a later stage and we would ask for your co-operation in order that there will be no delay in agreeing the sale.

General: While we endeavour to make our sales particulars fair, accurate and reliable, they are only a general guide to the property and, accordingly, if there is any point which is of particular importance to you, please contact the office and we will be pleased to check the position for you, especially if you are contemplating travelling some distance to view the property.

Measurements: These approximate room sizes are only intended as general guidance. You must verify the dimensions carefully before ordering carpets or any built-in furniture.

Services: Please note we have not tested the services or any of the equipment or appliances in this property, accordingly we strongly advise prospective buyers to commission their own survey or service reports before finalising their offer to purchase.