



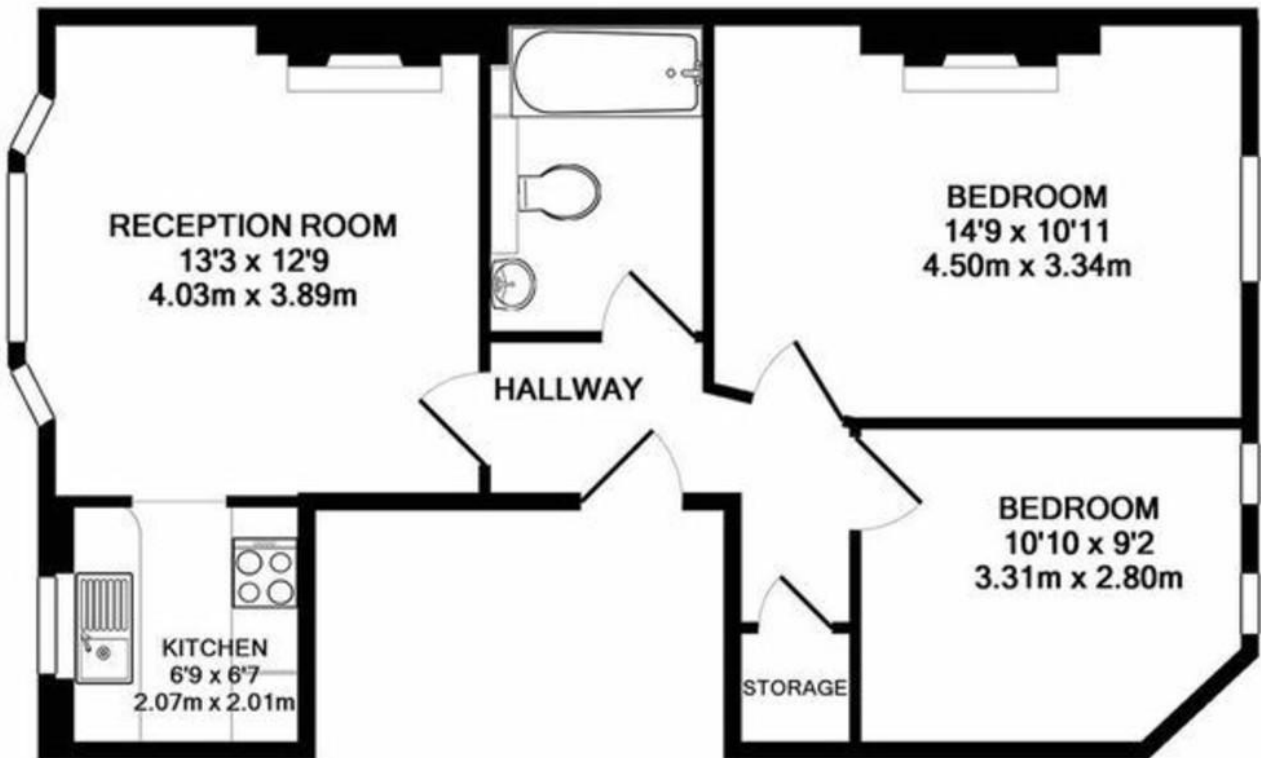
Birchington Road, NW6, London

£2,000 pcm

Welcome to this spacious two-bedroom flat on Birchington Road, NW6, presented in excellent condition and offered on an unfurnished basis. The property benefits from an abundance of natural light throughout, creating a bright and airy living space.

Ideally located close to shops and local amenities, with excellent transport links and set within a fantastic location. The property is available from 19th February 2026, and viewing is highly recommended.

- Two Bedrooms
- Unfurnished
- Close to shops and local amenities
- Excellent condition
- Good Transport Links
- Abundance of natural light
- Fantastic location
- Available 19th February 2026!
- Spacious
- Viewing Recommended



BIRCHINGTON ROAD NW6
TOTAL APPROX. FLOOR AREA 581 SQ.FT. (54.0 SQ.M.)

Floorplans are for identification and guideline purposes only, not to scale. Compliant with RICS code of measuring practice. Floor plan supplied by Chik Chak Limited.
Made with Metropix ©2017

MONEY LAUNDERING REGULATIONS 2003: Intending purchasers will be asked to produce identification documentation at a later stage and we would ask for your co-operation in order that there will be no delay in agreeing the sale.

General: While we endeavour to make our sales particulars fair, accurate and reliable, they are only a general guide to the property and, accordingly, if there is any point which is of particular importance to you, please contact the office and we will be pleased to check the position for you, especially if you are contemplating travelling some distance to view the property.

Measurements: These approximate room sizes are only intended as general guidance. You must verify the dimensions carefully before ordering carpets or any built-in furniture.

Services: Please note we have not tested the services or any of the equipment or appliances in this property, accordingly we strongly advise prospective buyers to commission their own survey or service reports before finalising their offer to purchase.