



Chambers Lane, London NW10

£575,000 Leasehold

Welcome to Chambers Lane - a truly picturesque garden apartment that perfectly balances charm, light, and modern living. Set within a handsome semi-detached building, this fantastic ground floor flat benefits from its own private entrance and an enviable position neatly poised between Kensal Rise and Willesden Green - offering the best of both vibrant neighbourhoods. The layout flows beautifully, with an open-plan kitchen and living area that retains distinct zones for dining, relaxing, and entertaining. The bathroom has been finished to a meticulous standard, showcasing quality and attention to detail throughout. Both bedrooms are generous in size, offering comfort and style in equal measure. The garden is a real showpiece - a private oasis perfect for al-fresco dining or unwinding - complete with a versatile studio/outhouse at the rear, ideal as a home office or creative space. Being semi-detached, the property enjoys an abundance of natural light from multiple aspects - a rare advantage over typical mid-terrace homes.

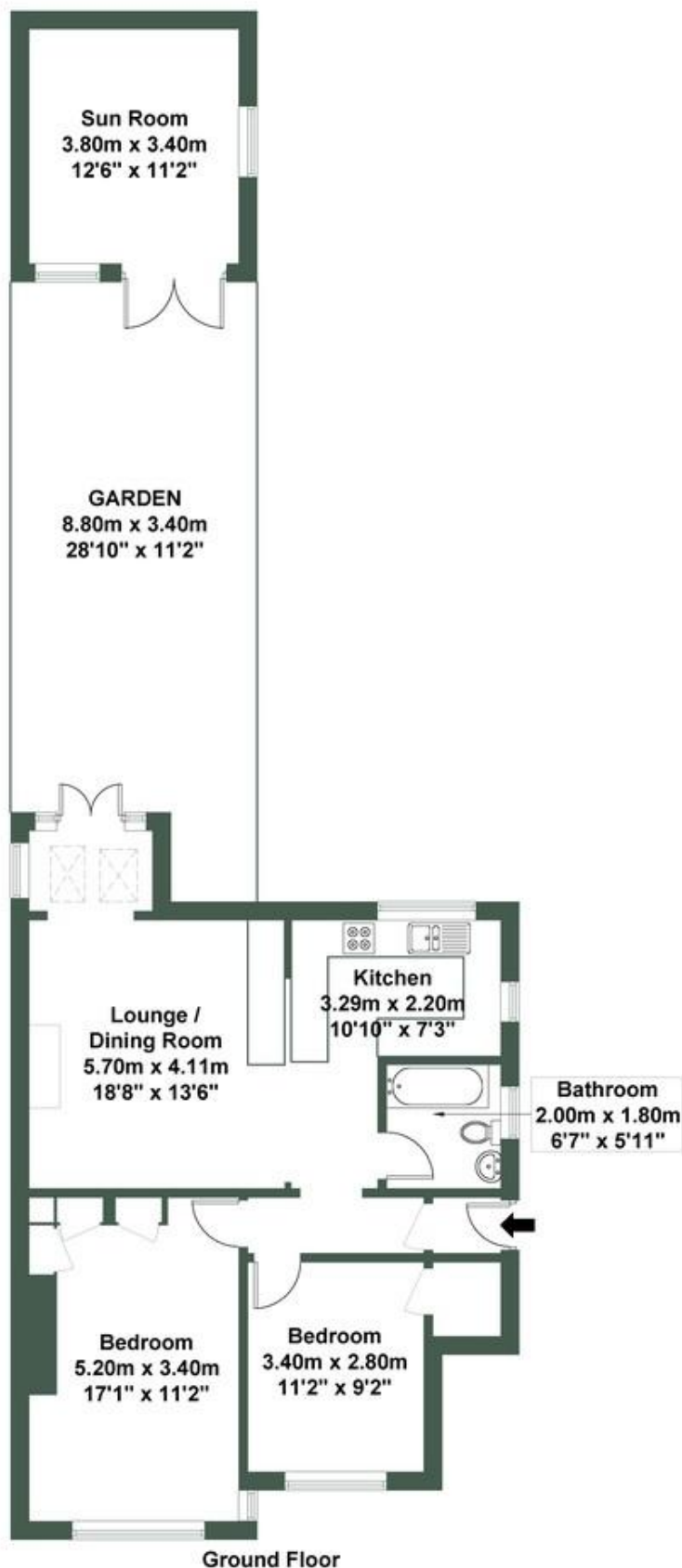
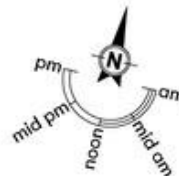
- Ground floor apartment
- Private Garden
- Two bedrooms
- Own entrance
- Home office
- Excellent condition
- Fantastic location
- 866 sq ft
- Amazing layout
- Close to shops and transport

CHAMBERS LANE

Approximate Gross Internal Area = 67.6 sq m / 728 sq ft

Sun Room = 12.9 sq m / 138 sq ft

Total = 80.5 sq m / 866 sq ft



MONEY LAUNDERING REGULATIONS 2003: Intending purchasers will be asked to produce identification documentation at a later stage and we would ask for your co-operation in order that there will be no delay in agreeing the sale.

General: While we endeavour to make our sales particulars fair, accurate and reliable, they are only a general guide to the property and, accordingly, if there is any point which is of particular importance to you, please contact the office and we will be pleased to check the position for you, especially if you are contemplating travelling some distance to view the property.

Measurements: These approximate room sizes are only intended as general guidance. You must verify the dimensions carefully before ordering carpets or any built-in furniture.

Services: Please note we have not tested the services or any of the equipment or appliances in this property, accordingly we strongly advise prospective buyers to commission their own survey or service reports before finalising their offer to purchase.