



## Gloucester Terrace, London W2

### £975,000 Leasehold

Welcome to Gloucester Terrace; a top floor split level flat with a roof terrace and an abundance of natural light!

Set in the heart of Westminster, this stunning three-bedroom apartment offers stylish, spacious living with the added luxury of a private roof terrace. Finished to an excellent standard throughout, the property combines modern design with comfort, all in one of London's most prestigious locations.

Bright and airy, the home boasts an abundance of natural light thanks to its large windows and generous proportions. The expansive open-plan kitchen and living area provides a perfect space for both everyday living and entertaining, while the private roof terrace offers a tranquil retreat with room to relax or dine al fresco.

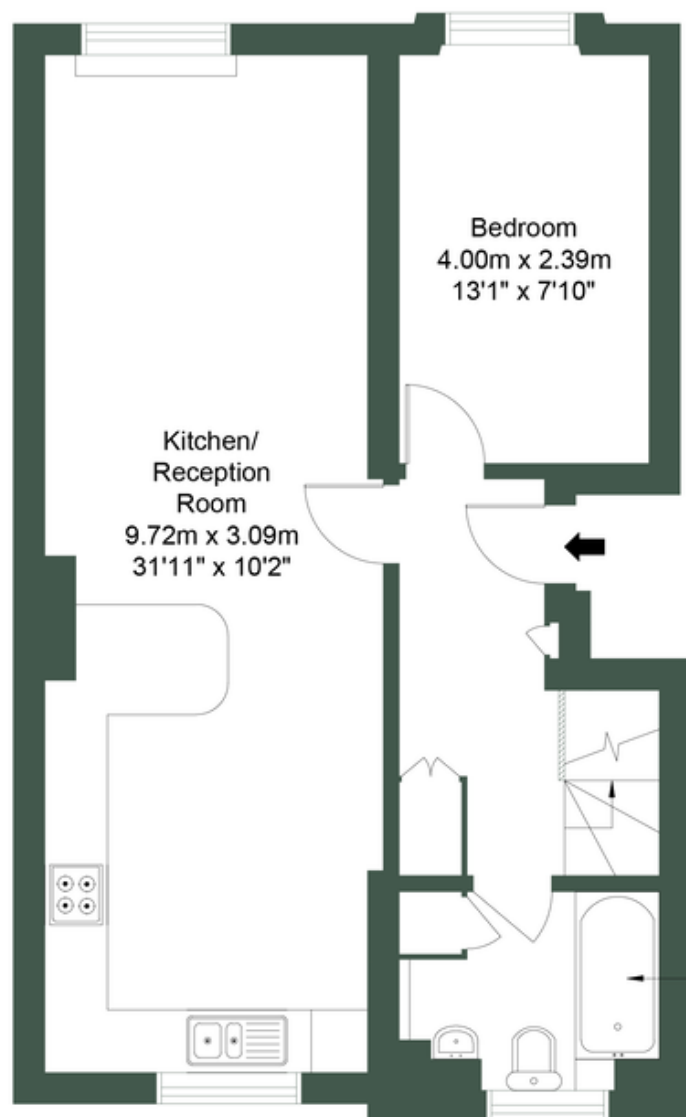
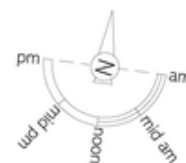
- Private Roof Terrace
- Bright and Airy
- Excellent Condition
- Ideally Located
- Three Bedrooms
- Spacious
- Abundance of Natural Light
- Large Open plan kitchen living
- Westminster
- Walking distance to Underground

# GLOUCESTER TERRACE, W2

Approximate Gross Internal Area = 97.86 sq.m / 1053 sq.ft

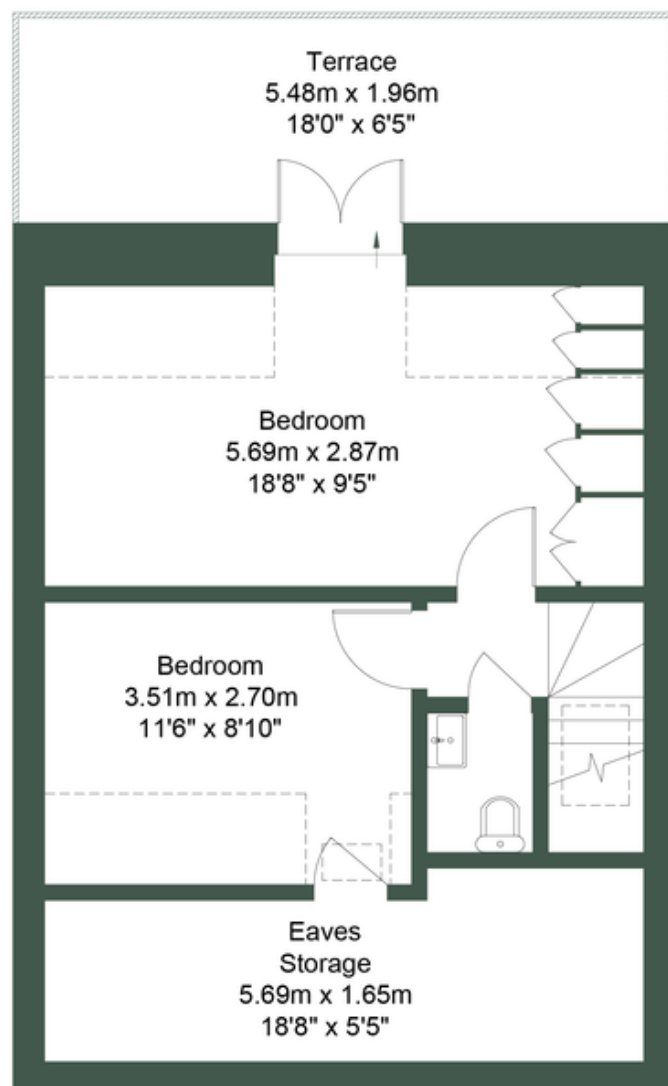
(Including Eaves Storage)

Eaves Storage = 9.46 sq.m / 102 sq.ft



Fourth Floor

Bathroom  
2.49m x 1.90m  
8'2" x 6'3"



Fifth Floor

M MILE

**MONEY LAUNDERING REGULATIONS 2003:** Intending purchasers will be asked to produce identification documentation at a later stage and we would ask for your co-operation in order that there will be no delay in agreeing the sale.

**General:** While we endeavour to make our sales particulars fair, accurate and reliable, they are only a general guide to the property and, accordingly, if there is any point which is of particular importance to you, please contact the office and we will be pleased to check the position for you, especially if you are contemplating travelling some distance to view the property.

**Measurements:** These approximate room sizes are only intended as general guidance. You must verify the dimensions carefully before ordering carpets or any built-in furniture.

**Services:** Please note we have not tested the services or any of the equipment or appliances in this property, accordingly we strongly advise prospective buyers to commission their own survey or service reports before finalising their offer to purchase.