



Brondesbury Villas, London NW6

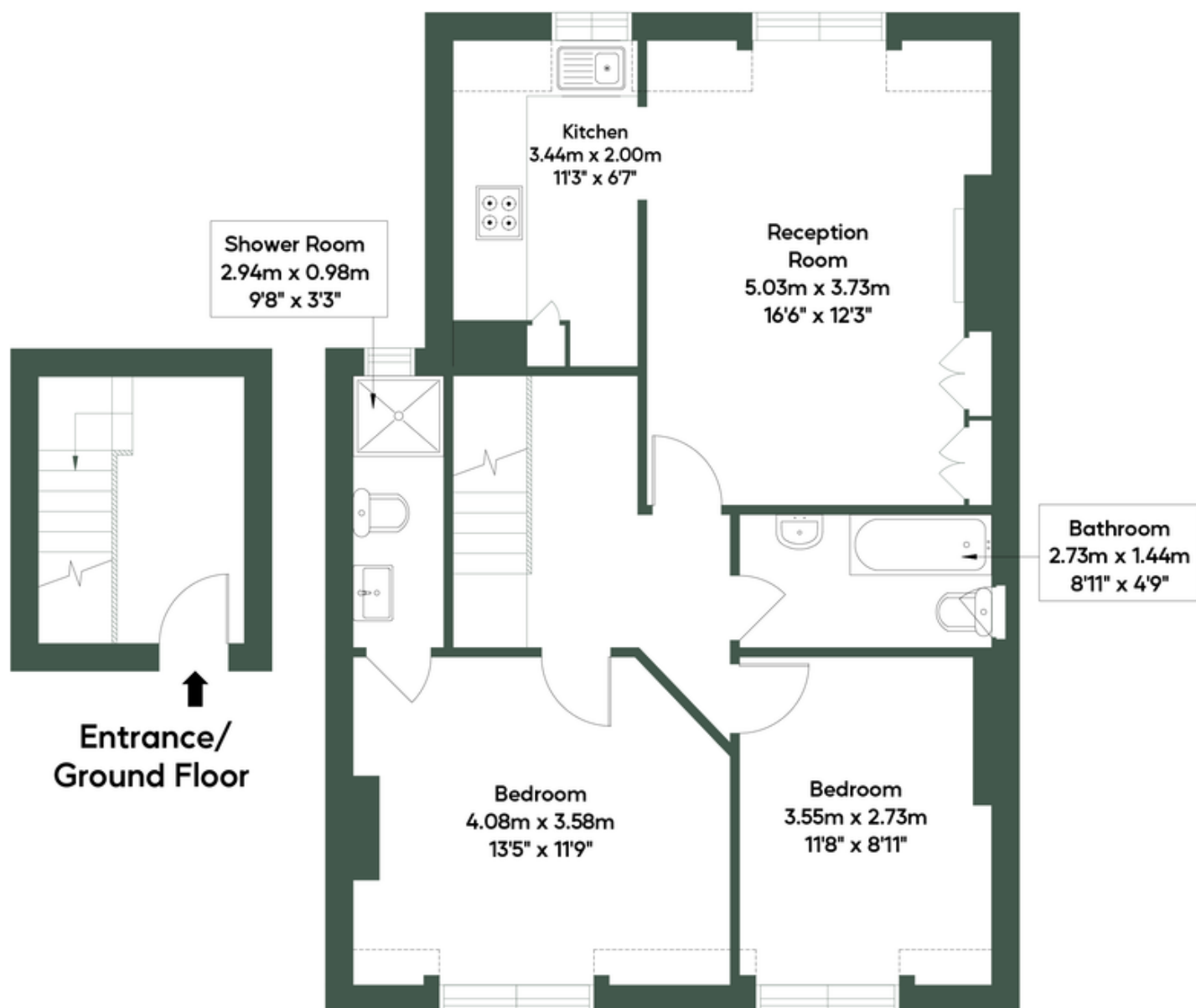
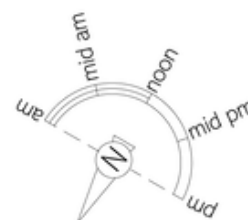
£2,500 pcm

Welcome to Brondesbury Villas – a stunning, bright and airy two-bedroom apartment available to let in one of North West London’s most desirable locations. Spanning 787 sq ft, this beautifully presented home offers generous living space, two well-proportioned bedrooms, and two stylish bathrooms, all finished to an excellent standard. The apartment is part-furnished and ready to move into from October, making it an ideal choice for those seeking a seamless transition into their new home. Perfectly positioned in prime NW6, you’ll find yourself just moments from the vibrant Salusbury Road with its array of independent cafés, award-winning restaurants, artisan bakeries and boutique shops, giving the neighbourhood a truly village-like feel. A short stroll brings you to the green open spaces of Queen’s Park, with its sports facilities, Sunday farmers’ market and family-friendly atmosphere, while the fashionable shops and nightlife of West Hampstead, Maida Vale and Notting Hill are also within easy reach. For excellent connectivity, Queen’s Park station is only a few minutes’ walk away, offering both the Bakerloo Line and London Overground services into the West End and the City. Brondesbury Park and Kilburn High Road stations are nearby too, ensuring swift links across London. This apartment offers the perfect blend of stylish modern living, outstanding local amenities and superb transport connections – a rare opportunity in such a sought-after part of London.

- Second floor apartment
- Two double bedrooms
- Two bathrooms
- 787 sq ft
- Part furnished
- Available early October
- Excellent condition
- Great location
- Bright and airy
- Close to shops and transports

BRONDESBURY VILLAS, NW6

Approximate Gross Internal Area = 73.14 sq.m / 787 sq.ft



Entrance/
Ground Floor

Second Floor

M MILE

MONEY LAUNDERING REGULATIONS 2003: Intending purchasers will be asked to produce identification documentation at a later stage and we would ask for your co-operation in order that there will be no delay in agreeing the sale.

General: While we endeavour to make our sales particulars fair, accurate and reliable, they are only a general guide to the property and, accordingly, if there is any point which is of particular importance to you, please contact the office and we will be pleased to check the position for you, especially if you are contemplating travelling some distance to view the property.

Measurements: These approximate room sizes are only intended as general guidance. You must verify the dimensions carefully before ordering carpets or any built-in furniture.

Services: Please note we have not tested the services or any of the equipment or appliances in this property, accordingly we strongly advise prospective buyers to commission their own survey or service reports before finalising their offer to purchase.