



Orchid Mews, London NW10

£2,650 pcm

We are pleased to bring you this amazing three bedroom house situated in this residential area in NW10.

This fabulous home provides an incredible 1400 sq ft of modern living space across three floors.

- Modern constructed house
- Semi detached
- Three double bedroom
- Available September
- Private roof terrace
- Garage
- Secure development
- Excellent condition
- 1400 sq ft
- Close to shops and transport

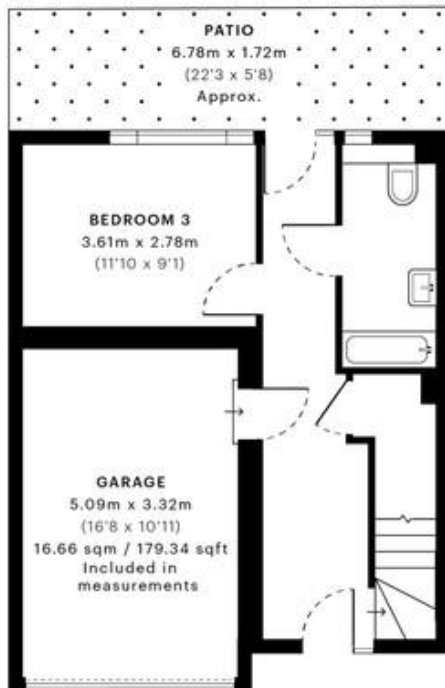


Orchid Mews, NW10

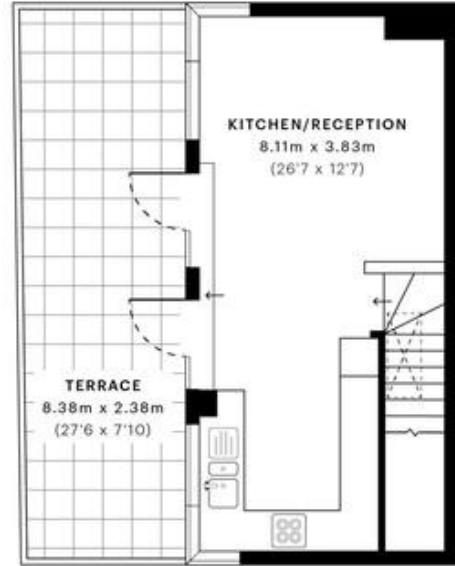
CAPTURE DATE 26/09/2022 LASER SCAN POINTS 84,329,174

GROSS INTERNAL AREA

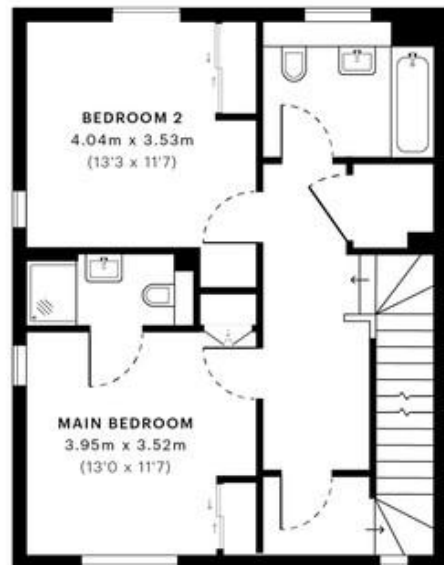
131.25 sqm / 1412.76 sqft



— Ground Floor



— Second Floor



— First Floor

GROSS INTERNAL AREA (GIA)
The footprint of the property
131.25 sqm / 1412.76 sqft

NET INTERNAL AREA (NIA)
Excludes walls and external features
Includes landings, restricted head height
97.66 sqm / 1051.20 sqft

EXTERNAL STRUCTURAL FEATURES
Balconies, terraces, verandas etc.
19.48 sqm / 209.68 sqft

RESTRICTED HEAD HEIGHT
Limited use area under 2.0 m
0.00 sqm / 0.00 sqft

Specified floor plans are produced in accordance with

ENFS 50:2020:2020 142.00 sqm / 1528.00 sqft

MONEY LAUNDERING REGULATIONS 2003: Intending purchasers will be asked to produce identification documentation at a later stage and we would ask for your co-operation in order that there will be no delay in agreeing the sale.

General: While we endeavour to make our sales particulars fair, accurate and reliable, they are only a general guide to the property and, accordingly, if there is any point which is of particular importance to you, please contact the office and we will be pleased to check the position for you, especially if you are contemplating travelling some distance to view the property.

Measurements: These approximate room sizes are only intended as general guidance. You must verify the dimensions carefully before ordering carpets or any built-in furniture.

Services: Please note we have not tested the services or any of the equipment or appliances in this property, accordingly we strongly advise prospective buyers to commission their own survey or service reports before finalising their offer to purchase.