

FREEHOLD



House - Terraced

BARNMEAD ROAD, DAGENHAM, RM9 5DX

Asking Price

£350,000

FEATURES

- Two bedrooms
- Fitted kitchen
- Outside WC
- Gas central heating
- Lounge
- Upstairs Bathroom
- Double glazing
- Off street parking



STEPS

Estate Agents

2 Bedroom House - Terraced located in Dagenham

Entrance

Via Wood Grain Effect uPVC door to hallway

Hallway

Radiator. Understairs storage cupboard. Staircase to first floor. Wood grain effect uPVC window to rear.

Lounge

12'9" x 12'7"

Wood grain effect uPVC window to front. Laminate effect wood flooring. Feature fire place. Radiator.

Kitchen

9'8" x 8'2"

Range of fitted wall and base units with roll top work surfaces. Stainless steel single drainer sink unit with mixer taps. Tiled walls. Wall mounted boiler. Spaces for washing machine, Fridge freezer and cooker. Radiator. Wood grain effect uPVC window to Rear. Wood grain effect uPVC door to garden.

Landing

Access to loft. Doors to

Bedroom One

16'1" x 10'0"

Wood grain effect uPVC window to front. Radiator.

Bedroom Two

11'4" x 7'8"

Wood grain effect uPVC window to rear. Radiator.

Bathroom

8'3" x 4'6"

Panel enclosed bath. Pedestal wash hand basin. Low level WC. Tiled splash backs. Radiator. Wood grain effect obscure glazed uPVC window to rear.

Outside WC

3'5" x 3'1"

Low level WC. Wash hand basin.

Rear Garden

60'0" x 17'4"

Front Garden

Providing off street parking.

We routinely refer potential purchasers to Move with Us Ltd. It is your decision whether you choose to deal with Move with Us Ltd. In making that decision, you should know that we receive an annual payment benefits from Move with Us Ltd, equating to approximately £314.48 per referral.

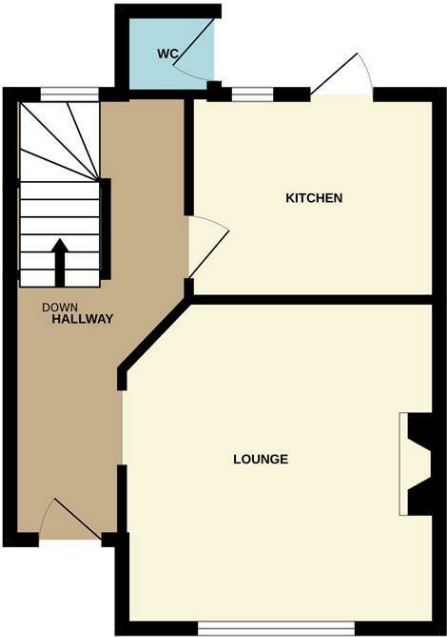


DAGENHAM SALES | STEPS ESTATE AGENTS, 298 HEATHWAY, DAGENHAM, ESSEX, RM10 8LU

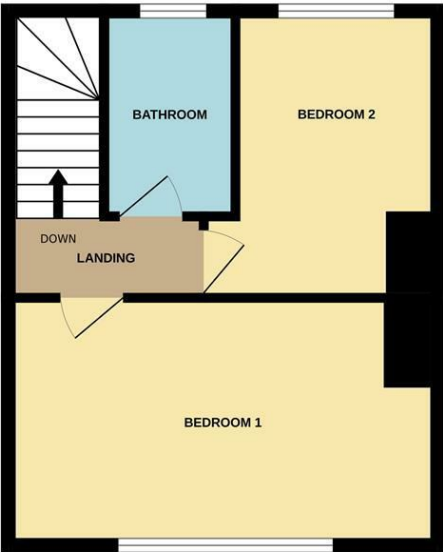
Call us on
020 8593 5933
dagenham@steps.me.uk
www.steps.me.uk

Council Tax Band
C

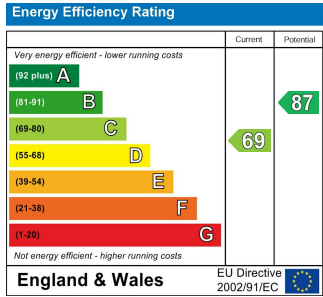
GROUND FLOOR



1ST FLOOR



Whilst every attempt has been made to ensure the accuracy of the floorplan contained here, measurements of doors, windows, rooms and any other items are approximate and no responsibility is taken for any error, omission or mis-statement. This plan is for illustrative purposes only and should be used as such by any prospective purchaser. The services, systems and appliances shown have not been tested and no guarantee as to their operability or efficiency can be given.
Made with Metropix ©2025



Agents Note: Whilst every care has been taken to prepare these particulars, they are for guidance purposes only. All measurements are approximate and are for general guidance purposes only and whilst every care has been taken to ensure their accuracy, they should not be relied upon and potential buyers are advised to recheck the measurements.

