



VERNON COURT
HENDON WAY
LONDON
NW2 2PE

PRICE: £2,000 Per

PART FURNISHED

HEATING AND HOT WATER INCLUDED

Situated in this very sought-after Mock Tudor style purpose-built block, this very large two-bedroom, 2-bathroom (1ensuite) apartment (1093 sq ft) is situated on the second floor (with lift).

The property benefits from a large reception room and dining room, a separate kitchen, principal bedroom with built in wardrobes & en-suite, spacious second bedroom also with built in wardrobes, and large storage cupboard in hallway.

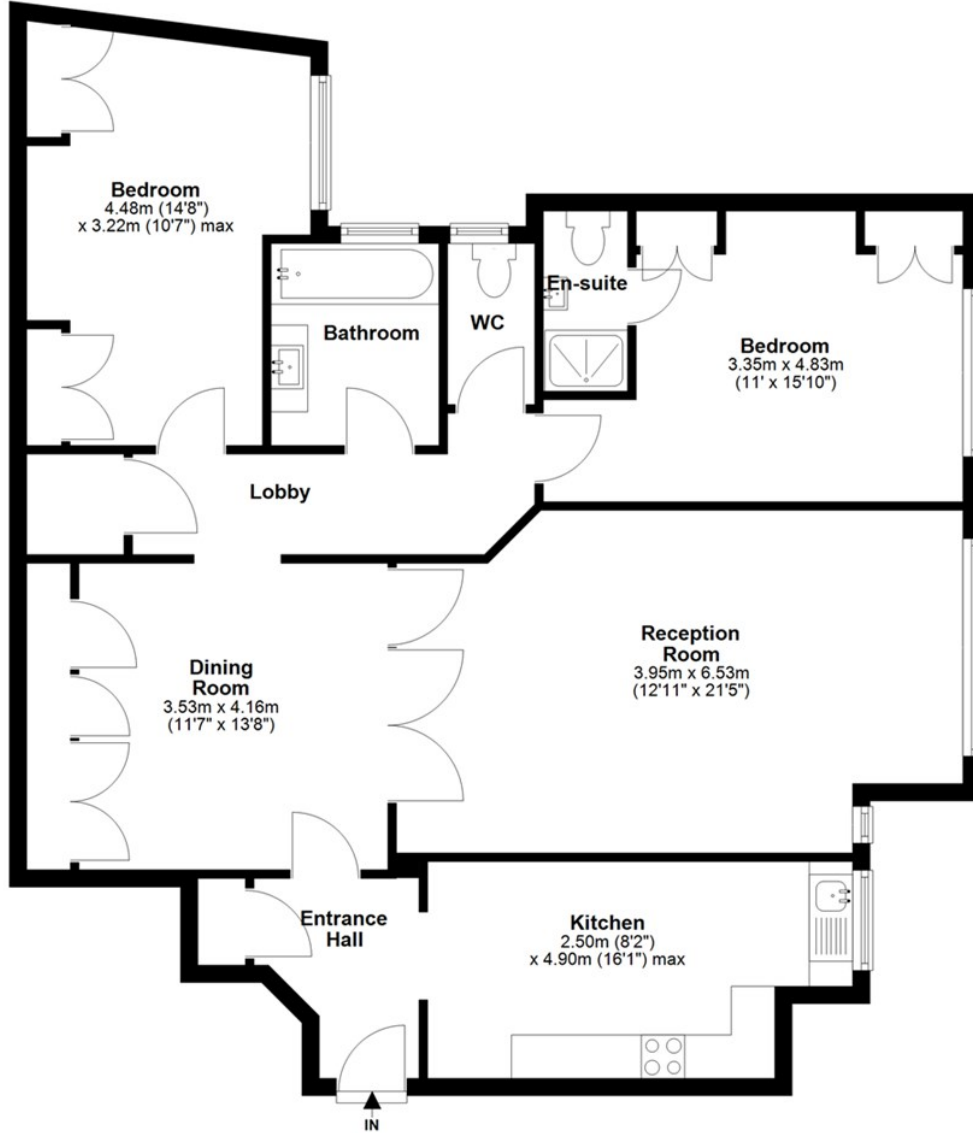
Further benefits include access to communal gardens, wood flooring and double glazing throughout. The development is positioned within close proximity to the facilities and amenities of Finchley Road, West Hampstead, and Golders Green with a variety of transport links, including Jubilee Line/Metropolitan Line (Finchley Road and West Hampstead) the Northern Line (Golders Green), as well as the Overground link and the bus routes into Central London.

See Video Tour



FEATURES:

Second Floor
Approx. 101.6 sq. metres (1093.5 sq. feet)

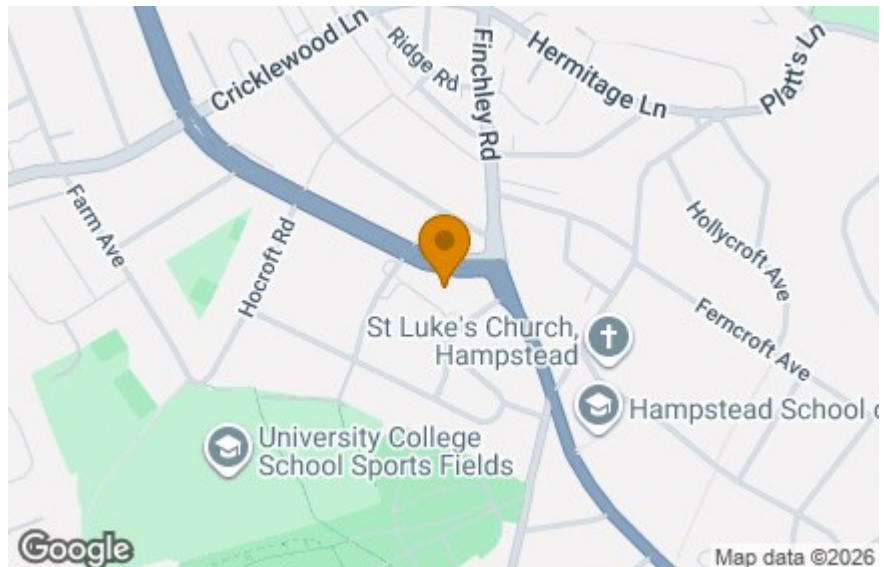


Total area: approx. 101.6 sq. metres (1093.5 sq. feet)

Energy Efficiency Rating

	Current	Potential
Very energy efficient - lower running costs		
(92 plus) A		
(81-91) B		
(69-80) C		
(55-68) D		
(39-54) E		
(21-38) F		
(1-20) G		
Not energy efficient - higher running costs		
England & Wales	EU Directive 2002/91/EC	

69



IMPORTANT NOTICE

Whilst every attempt has been made to ensure the accuracy of these details and floor plans contained here, measurements of doors, windows and rooms are approximate and no responsibility is taken for any error, omission or mis-statement. These plans and details are for representation only as defined by RICS code of measuring practice and should be used as such by any prospective tenant. Not to scale. Copyright: RHW Estates