



112 FINCHLEY ROAD  
LONDON NW3 5HT  
INFO@RHWESTATES.CO.UK  
020 7431 7121

WWW.RHWESTATES.CO.UK



GOLDHURST TERRACE  
SOUTH HAMPSTEAD  
LONDON  
NW6 3HB

**PRICE: £2,650 PCM**

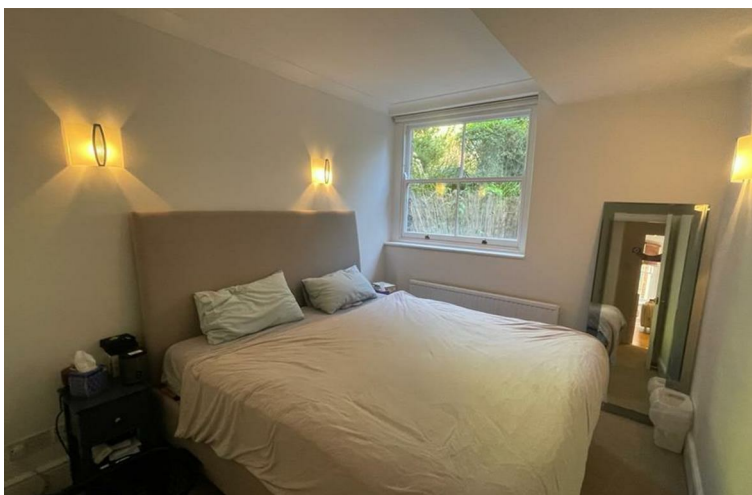
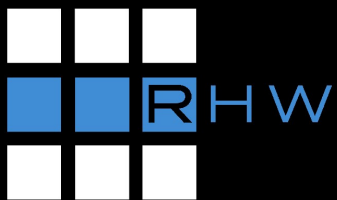
UNFURNISHED

We are pleased to offer this spacious apartment with a private entrance that has recently been extensively newly decorated. 2 double bedroom garden flat located on one of the most desired roads in the area, within a few minutes walk of Finchley Road tube station and shopping facilities.

Benefiting from a spacious reception/dining room, a fully fitted modern kitchen with all appliances, a modern bathroom, 2 double bedrooms and direct access to a large private terrace and shared garden.

\* See Video Tour\* (sofas & bed now removed)

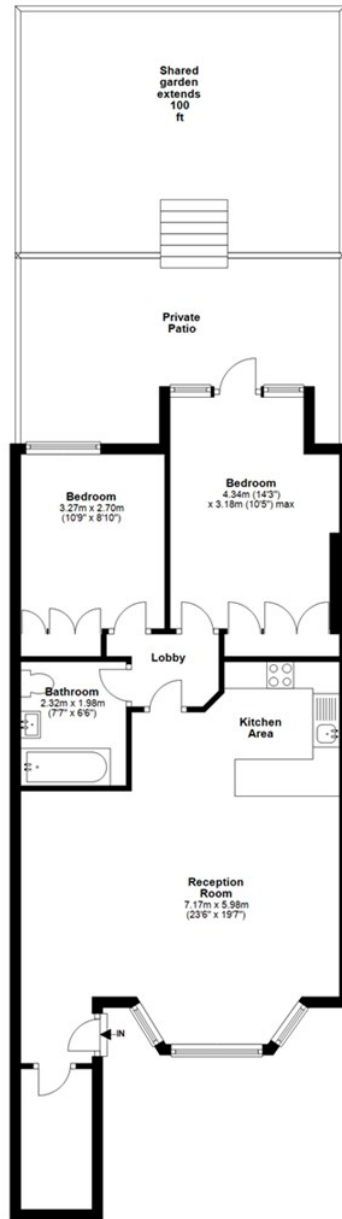





## FEATURES:

- Garden Flat
- Spacious
- 2 mins to Finchley Road Tube station
- Private Entrance
- Recently Decorated

# Ground Floor



Total area: approx. 71.1 sq. metres (764.9 sq. feet)

Energy Efficiency Rating		
	Current	Potential
Very energy efficient - lower running costs		
(92 plus) A		
(81-91) B		
(69-80) C		
(55-68) D		
(39-54) E		
(21-38) F		
(1-20) G		
Not energy efficient - higher running costs		
England & Wales	EU Directive 2002/91/EC	

## IMPORTANT NOTICE

Whilst every attempt has been made to ensure the accuracy of these details and floor plans contained here, measurements of doors, windows and rooms are approximate and no responsibility is taken for any error, omission or misstatement. These plans and details are for representation only as defined by RICS code of measuring practice and should be used as such by any prospective tenant. Not to scale. Copyright: RHW Estates

