



112 FINCHLEY ROAD
LONDON NW3 5HT
INFO@RHWESTATES.CO.UK
020 7431 7121

WWW.RHWESTATES.CO.UK



ST JOHNS COURT
FINCHLEY ROAD
LONDON
NW3 6LE

PRICE: £1,850 PCM

FURNISHED

We are delighted to offer this very well-presented one-bedroom apartment within this highly desired Art Deco purpose-built block.

The apartment is set on the 3rd floor accessed via the portered lobby with a passenger lift. Rear-facing so unaffected by any noise and features a bay window reception room, separate fitted kitchen, bedroom with en-suite bathroom/WC.

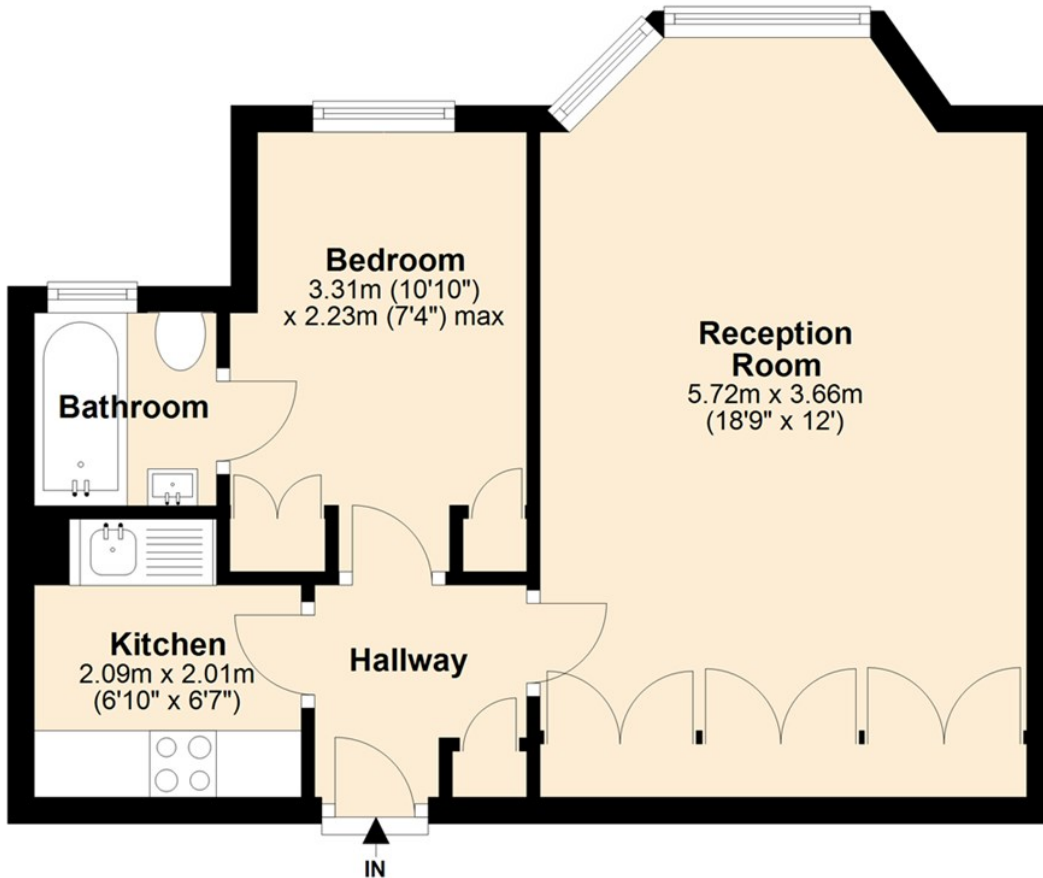
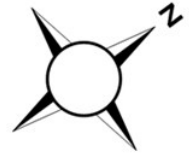
Included within the services of the block are communal heating and hot water and is ideally located adjacent to Finchley Road tube station (Jubilee & Metropolitan lines) with extensive shopping, restaurants and cafes in the immediate area. Available now furnished.




- FEATURES:**
- 3rd floor Apartment
 - Passenger lift & Porter
 - Communal heating & Hot water
 - Adjacent to Finchley Road tube station

Third Floor

Approx. 36.5 sq. metres (393.0 sq. feet)



Total area: approx. 36.5 sq. metres (393.0 sq. feet)

Energy Efficiency Rating		
	Current	Potential
Very energy efficient - lower running costs		
(92 plus) A		
(81-91) B		
(69-80) C		
(55-68) D		
(39-54) E		
(21-38) F		
(1-20) G		
Not energy efficient - higher running costs		
England & Wales	EU Directive 2002/91/EC	

IMPORTANT NOTICE

Whilst every attempt has been made to ensure the accuracy of these details and floor plans contained here, measurements of doors, windows and rooms are approximate and no responsibility is taken for any error, omission or misstatement. These plans and details are for representation only as defined by RICS code of measuring practice and should be used as such by any prospective tenant. Not to scale. Copyright: RHW Estates

