



GOLDHURST TERRACE

LONDON  
NW6 3HA

PRICE: £1,925 PCM

FURNISHED

See Video Tour

We are pleased to offer this 2 bedroom flat in the heart of South Hampstead only a short walk from Finchley Road tube station and shops.

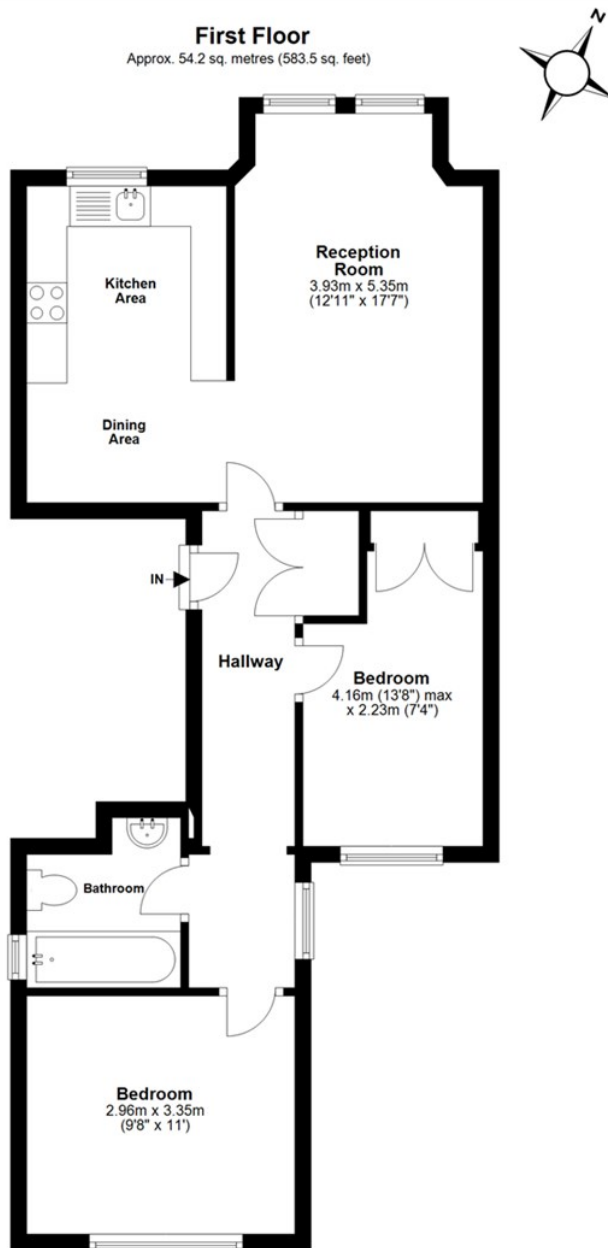
The flat is on the first floor of this well maintained Victorian Conversion. It benefits from a good-sized reception, fitted kitchen and 2 double bedrooms.

Available Furnished.






FEATURES:



Total area: approx. 54.2 sq. metres (583.5 sq. feet)

Energy Efficiency Rating		
	Current	Potential
Very energy efficient - lower running costs		
(92 plus) <b>A</b>		
(81-91) <b>B</b>		
(69-80) <b>C</b>		
(55-68) <b>D</b>	59	66
(39-54) <b>E</b>		
(21-38) <b>F</b>		
(1-20) <b>G</b>		
Not energy efficient - higher running costs		
<b>England &amp; Wales</b>	EU Directive 2002/91/EC	

#### IMPORTANT NOTICE

Whilst every attempt has been made to ensure the accuracy of these details and floor plans contained here, measurements of doors, windows and rooms are approximate and no responsibility is taken for any error, omission or misstatement. These plans and details are for representation only as defined by RICS code of measuring practice and should be used as such by any prospective tenant. Not to scale. Copyright: RHW Estates

