



112 FINCHLEY ROAD
LONDON NW3 5HT
INFO@RHWESTATES.CO.UK
020 7431 7121

WWW.RHWESTATES.CO.UK



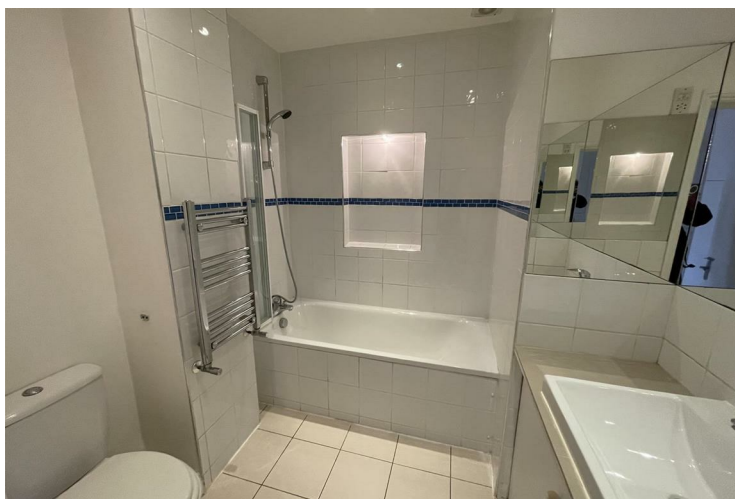
GREENCROFT GARDENS
SOUTH HAMPSTEAD
LONDON
NW6 3LS

PCM £1,950 PCM
SUBJECT TO CONTRACT

* VIDEO TOUR AVAILABLE * A very spacious 1 bedroom (+study) first-floor conversion within terraced Victorian residence backing 2.5 acres of beautiful communal parkland. Located at the top end of this popular address ideally placed around the corner of Finchley Road Tube.

Very large bay window reception room with access to the communal parkland. Double bedroom + a study area, quality bathroom/WC, and a fully equipped kitchen.

It is very rare to find such a large one bedroom flat in this location - Must be viewed.



FEATURES

- Very spacious
- Bright
- Use of Communal Gardens
- 2 mins to Finchley Road Tube station
- Unfurnished

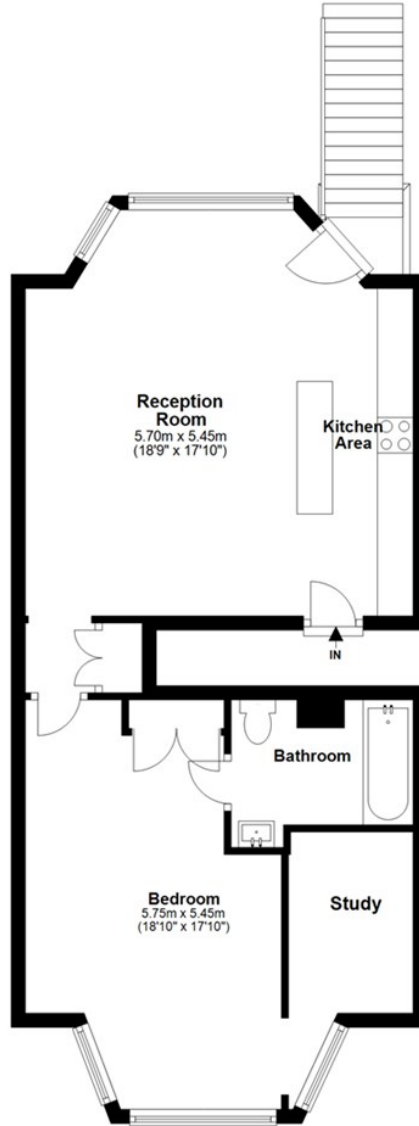
VIDEO TOUR:

SERVICE CHARGE: £

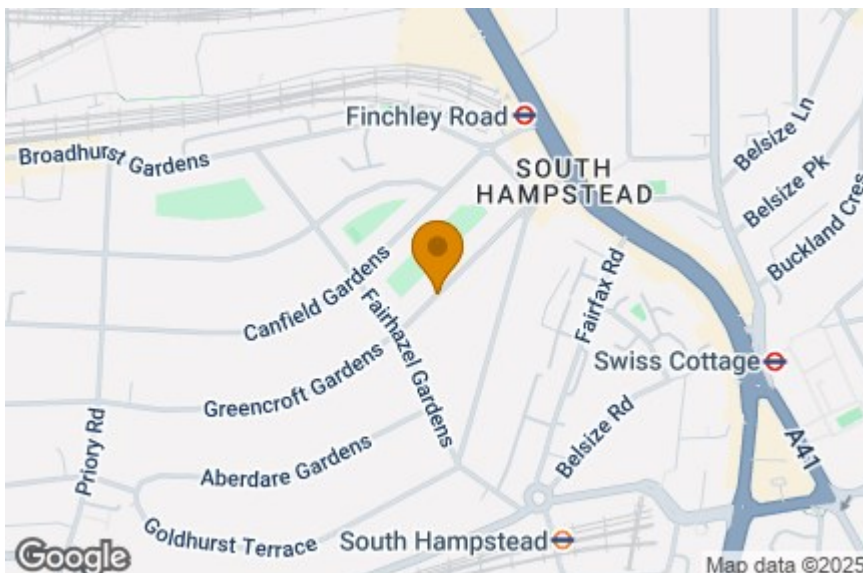
TENURE:

COUNCIL TAX: D

First Floor



Total area: approx. 58.6 sq. metres (630.7 sq. feet)



Energy Efficiency Rating		
	Current	Potential
Very energy efficient - lower running costs		
(92 plus) A		81
(81-91) B		
(69-80) C	71	
(55-68) D		
(39-54) E		
(21-38) F		
(1-20) G		
Not energy efficient - higher running costs		
England & Wales		
EU Directive 2002/91/EC		



IMPORTANT NOTICE

Whilst every attempt has been made to ensure the accuracy of these details and floor plans contained here, measurements of doors, windows and rooms are approximate and no responsibility is taken for any error, omission or mis-statement. These plans and details are for representation only as defined by RICS code of measuring practice and should be used as such by any prospective purchaser.

Not to scale. Copyright: RHW Estates