

112 FINCHLEY ROAD
LONDON NW3 5HT
INFO@RHWESTATES.CO.UK
020 7431 7121

WWW.RHWESTATES.CO.UK



CLAREMONT HEIGHTS
PENTONVILLE ROAD
ISLINGTON
N1 9PR

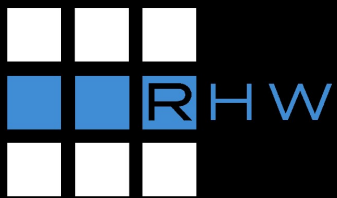
PCM £2,750 PCM
SUBJECT TO CONTRACT

SEE VIDEO TOUR

We are delighted to offer this first floor 2 bedroom apartment within a luxury modern development featuring Concierge and passenger lift. Ideally located moments from Angel Tube station and the bustling Islington Upper Street.

The flat features a master bedroom with an en-suite shower and a second bedroom with a front-facing balcony. Reception room with balcony with bright open aspect and archway to fully fitted kitchen. Large entrance hall with storeroom and further bathroom/WC.

Secure gated off-street parking space.



FEATURES

- Spacious 2 Bedroom Apartment
- Ideally located for Angel Tube Station
- Two balconies
- Concierge and Lift
- Off Street parking

VIDEO TOUR:

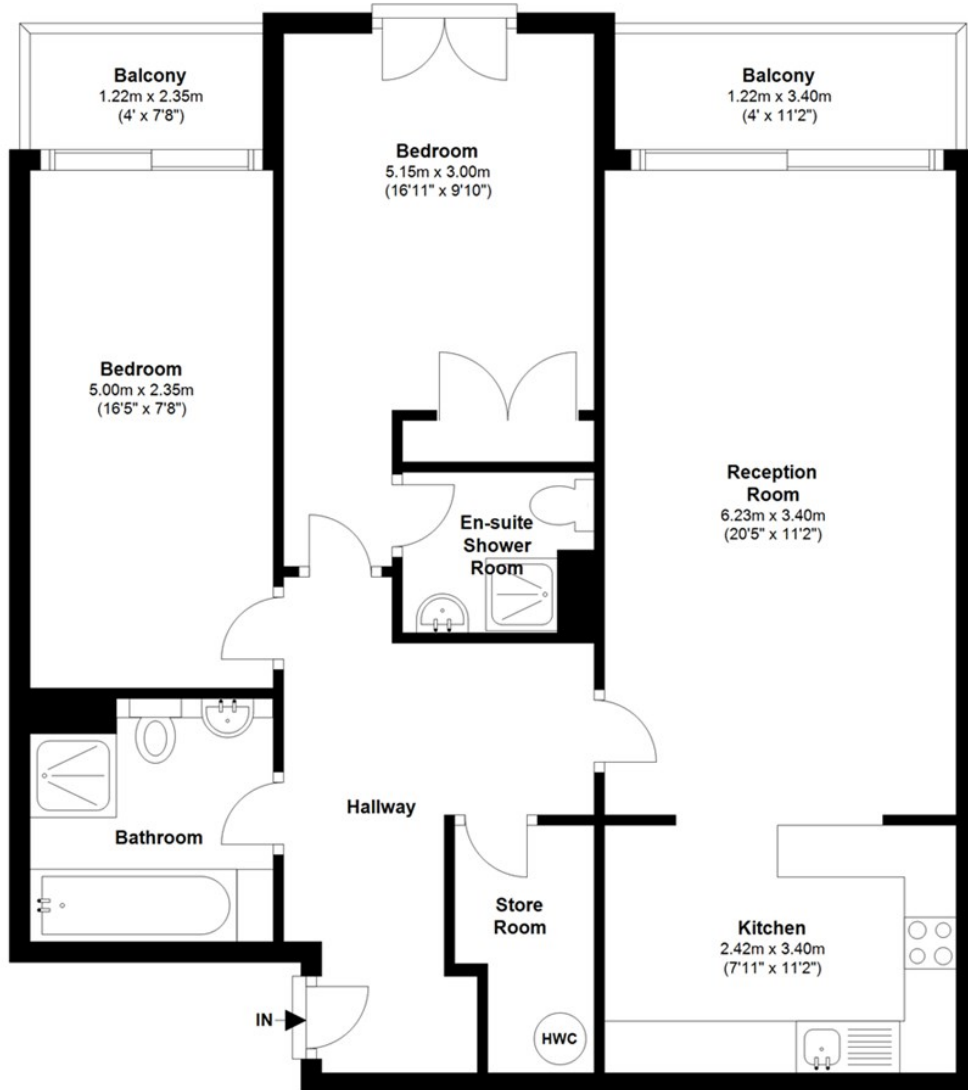
SERVICE CHARGE: £

TENURE:

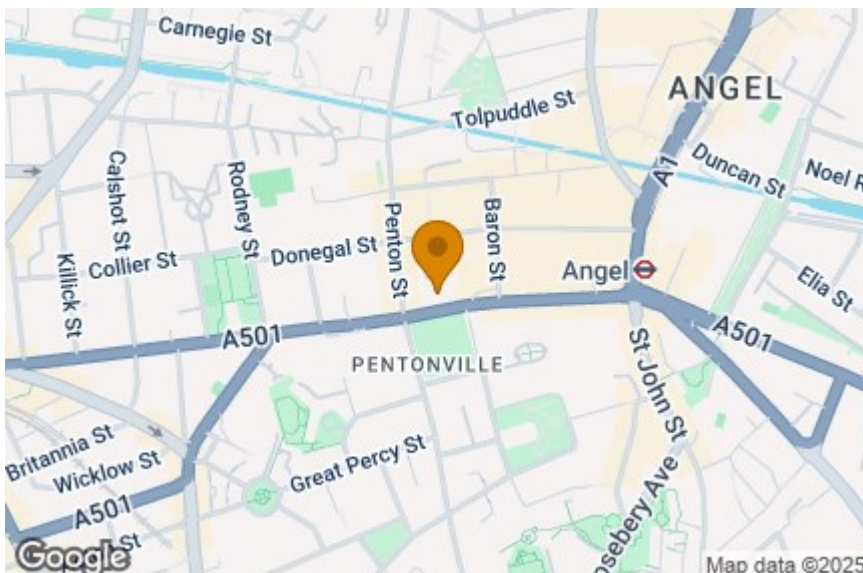
COUNCIL TAX: F

First Floor

Approx. 78.4 sq. metres (844.4 sq. feet)



Total area: approx. 78.4 sq. metres (844.4 sq. feet)



Energy Efficiency Rating		
	Current	Potential
Very energy efficient - lower running costs		
(92 plus) A		
(81-91) B		
(69-80) C		
(55-68) D		
(39-54) E		
(21-38) F		
(1-20) G		
Not energy efficient - higher running costs		
England & Wales	73	79
EU Directive 2002/91/EC		



IMPORTANT NOTICE

Whilst every attempt has been made to ensure the accuracy of these details and floor plans contained here, measurements of doors, windows and rooms are approximate and no responsibility is taken for any error, omission or mis-statement. These plans and details are for representation only as defined by RICS code of measuring practice and should be used as such by any prospective purchaser.

Not to scale. Copyright: RHW Estates