



LANCASTER GROVE  
BELSIZE PARK  
LONDON  
NW3 4NX

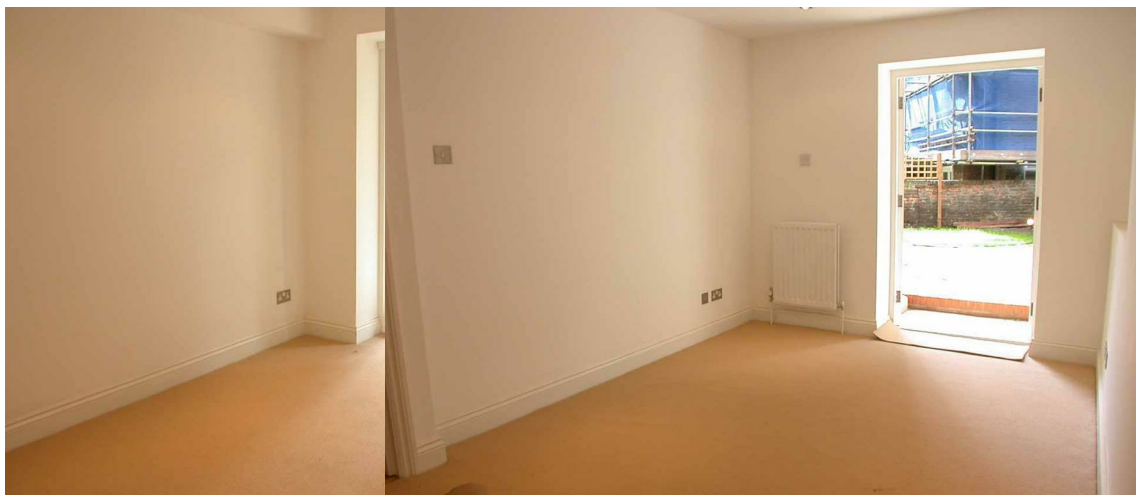
**PRICE: £2,750 PCM**

FURNISHED/UNFURNISHED

**\* SEE VIDEO TOUR\***

A two double-bedroom garden conversion within a stucco-fronted period residence located in this highly desired address ideally placed for both Swiss Cottage or Belsize Park tube stations and fantastic local amenities.

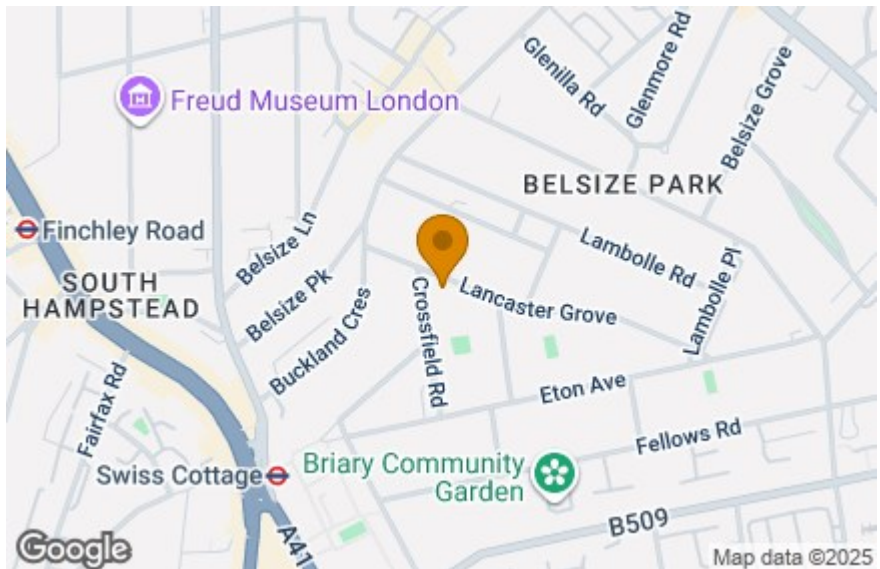
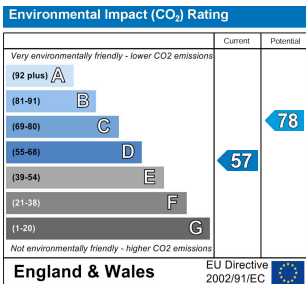
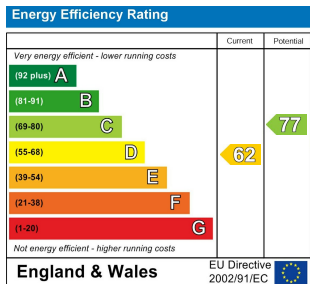
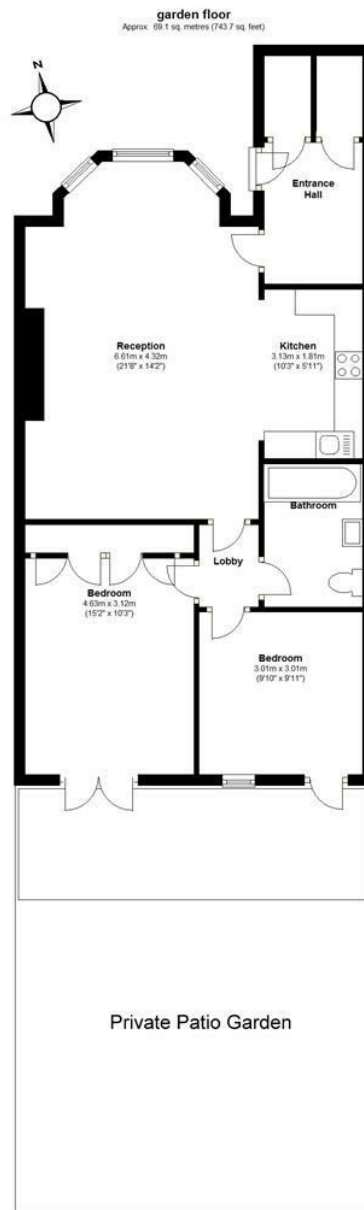
Finished to an excellent specification with solid oak flooring, luxury fitted kitchen and modern bathroom/WC. With a private entrance and a private rear patio garden. Independent gas central heating and available furnished or unfurnished.



## FEATURES:

- Private garden and Private entrance
- Wood flooring
- Newly Decorated
- Ideal for Swiss Cottage or Belsize park Tube





#### IMPORTANT NOTICE

Whilst every attempt has been made to ensure the accuracy of these details and floor plans contained here, measurements of doors, windows and rooms are approximate and no responsibility is taken for any error, omission or misstatement. These plans and details are for representation only as defined by RICS code of measuring practice and should be used as such by any prospective tenant. Not to scale. Copyright: RHW Estates