



FROGNAL
HAMPSTEAD
LONDON
NW3 6AG

A very attractive 2 bedroom flat located on one of the premier roads in the area.

The apartment has lots of character, 2 double bedrooms, exposed brick work, very large reception room, wooden floors and a fully fitted kitchen. The property also benefits from well-maintained communal gardens.

PRICE: £1,700 PCM

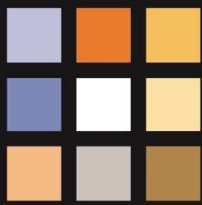
Located within a few minute walk from Finchley Road shops and Tube Station

FURNISHED



FEATURES:

- Top Floor Conversion
- 2 x Double Bedrooms
- Spacious Reception
- Communal Gardens
- Short walk to Finchley Road Tube station

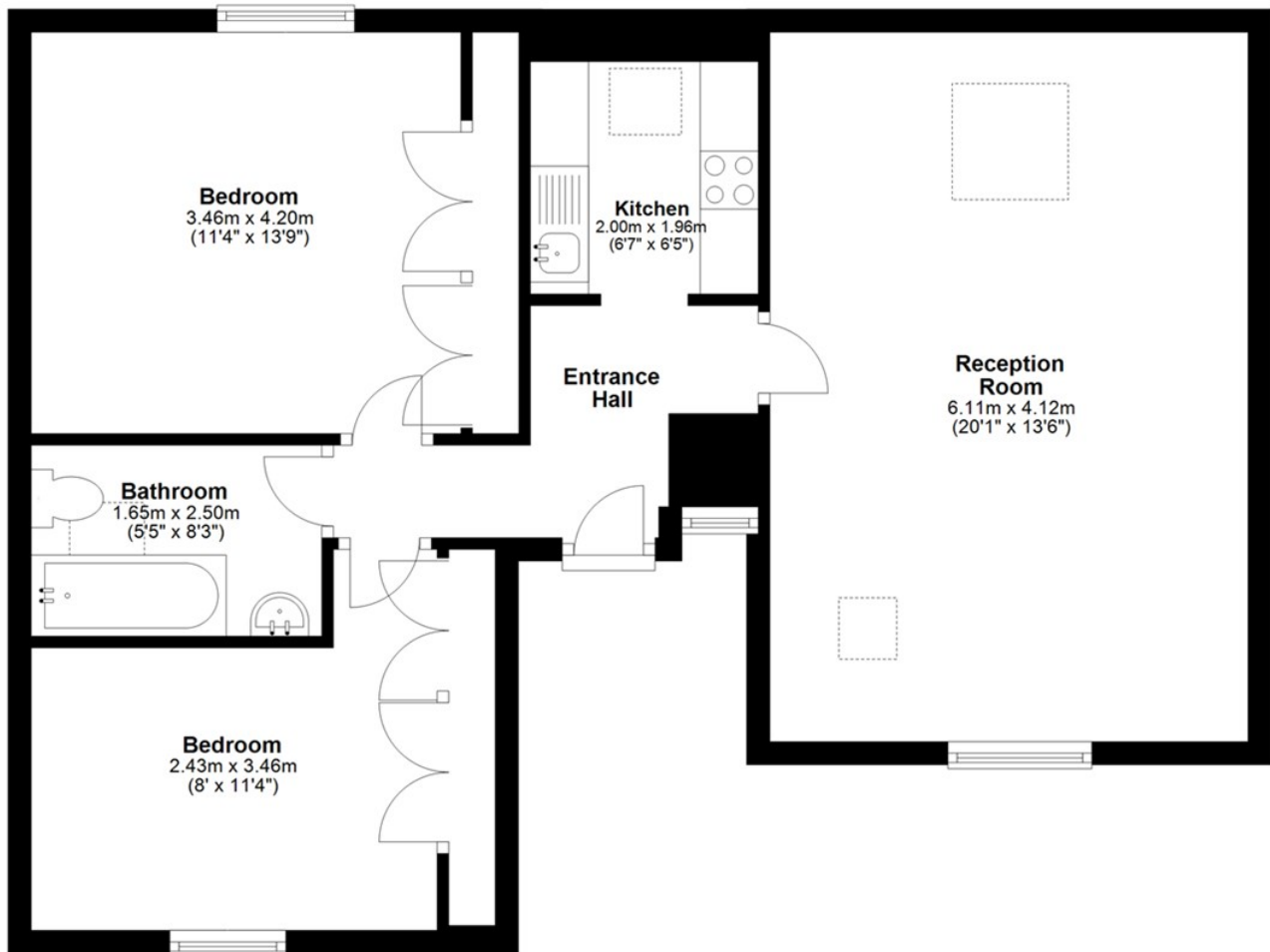


rhwestates.co.uk

112 FINCHLEY ROAD
LONDON NW3 5HT
020 7431 7121
info@rhwstates.co.uk

Third Floor

Approx. 65.6 sq. metres (706.2 sq. feet)



Total area: approx. 65.6 sq. metres (706.2 sq. feet)

Energy Efficiency Rating	
Current	Potential
78	50
England & Wales	
EU Directive 2002/91/EC	

Environmental Impact (CO ₂) Rating	
Current	Potential
79	43
England & Wales	
EU Directive 2002/91/EC	



IMPORTANT NOTICE

Whilst every attempt has been made to ensure the accuracy of these details and floor plans contained here, measurements of doors, windows and rooms are approximate and no responsibility is taken for any error, omission or misstatement. These plans and details are for representation only as defined by RICS code of measuring practice and should be used as such by any prospective purchaser.

Not to scale. Copyright: RHW Estates