



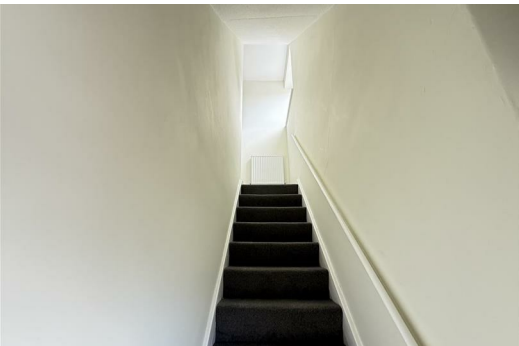
24A Tudor Road, Nuneaton, CV10 9EH

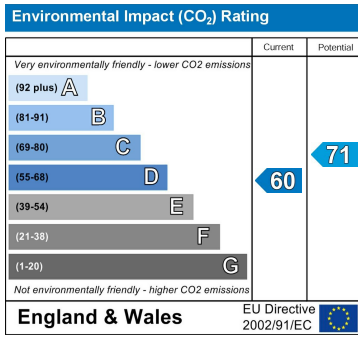
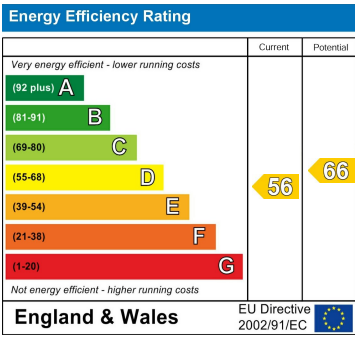
£650 Per Month

SE Propertie presents this two-bedroom maisonette in Nuneaton CV10 available to let NOW.
Ideal for working professionals and couples.

This 2-bedroom maisonette is located on the first floor and comprises lounge, one double bedroom, one single bedroom with storage.
Fitted kitchen with a pantry, over-the counter and upper units and brand new electric cooker with oven (cooker is gifted).
Bathroom features a shower over the bath and a window for natural light and ventilation.
Carpets throughout in the lounge, bedrooms and the stairs, fresh vinyl flooring in the bathroom.

Double glazing and gas central heating and is close to bus routes and local amenities.





63-65 Regent Street, Nuneaton, CV11 4BL
 T. 02476343683 F. 02476371939 E. sally@seproperties.co.uk
 PROPRIETOR - Sally A Ellis (DIP RLM)
 VAT Reg No: 233 3230 52 Company No: 09803013