

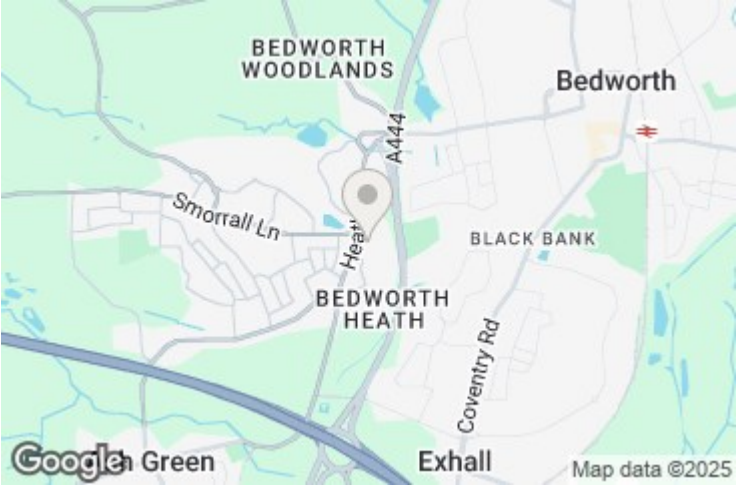


### **34 Alice Close, Bedworth, CV12 0BS**

**Asking Price £225,000**

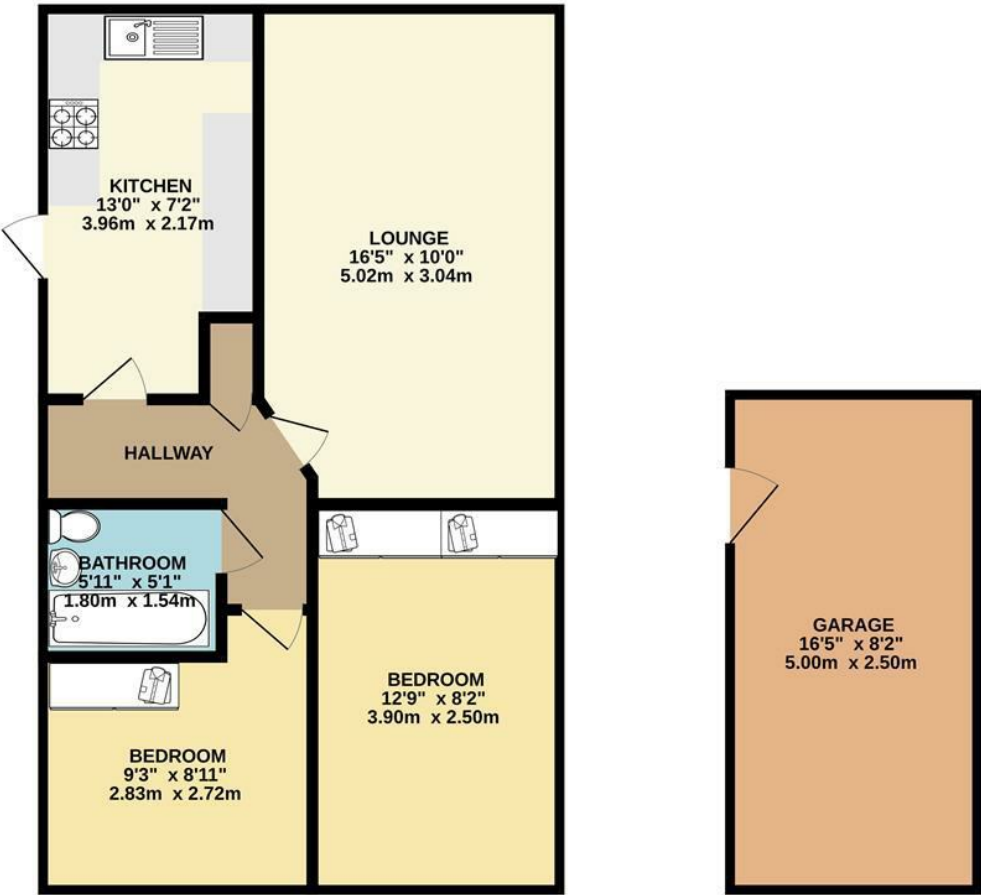
This charming detached bungalow is situated in a sought-after location and offers a generously sized main double bedroom complete with built-in wardrobes. and a second single bedroom again with built in storage.

The well-appointed kitchen features built-in pantries, while the separate reception room provides a comfortable living space with beautiful garden views. Outside, the property boasts ample parking, a single garage, and a lovely garden retreat—perfect for relaxation and outdoor enjoyment.

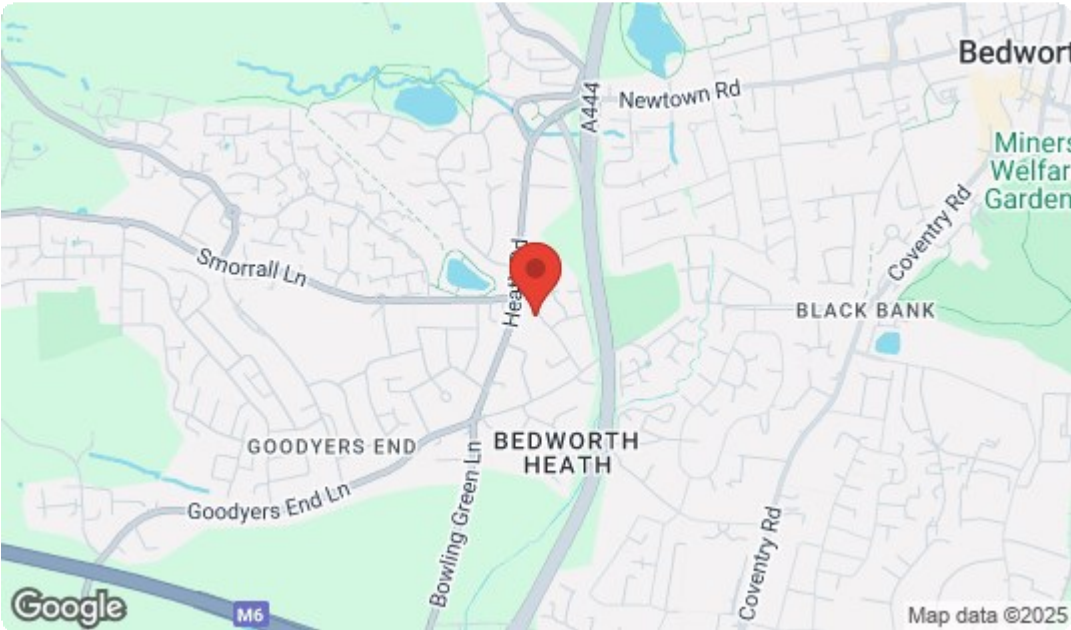




GROUND FLOOR  
635 sq.ft. (59.0 sq.m.) approx.



TOTAL FLOOR AREA : 635 sq.ft. (59.0 sq.m.) approx.  
Whilst every attempt has been made to ensure the accuracy of the floorplan contained here, measurements of doors, windows, rooms and any other items are approximate and no responsibility is taken for any error, omission or mis-statement. This plan is for illustrative purposes only and should be used as such by any prospective purchaser. The services, systems and appliances shown have not been tested and no guarantee as to their operability or efficiency can be given.  
Made with Metropix ©2025



Energy Efficiency Rating			
		Current	Potential
Very energy efficient - lower running costs			
(92 plus)	A		
(81-91)	B		
(69-80)	C		
(55-68)	D		
(39-54)	E		
(21-38)	F		
(1-20)	G		
Not energy efficient - higher running costs			
		62	
EU Directive 2002/91/EC			
England & Wales			
Environmental Impact (CO <sub>2</sub> ) Rating			
		Current	Potential
Very environmentally friendly - lower CO <sub>2</sub> emissions			
(92 plus)	A		
(81-91)	B		
(69-80)	C		
(55-68)	D		
(39-54)	E		
(21-38)	F		
(1-20)	G		
Not environmentally friendly - higher CO <sub>2</sub> emissions			
EU Directive 2002/91/EC			
England & Wales			

63-65 Regent Street, Nuneaton, CV11 4BL  
T. 02476343683 F. 02476371939 E. sally@seproperties.co.uk  
PROPRIETOR - Sally A Ellis (DIP RLM)  
VAT Reg No: 233 3230 52 Company No: 09803013