



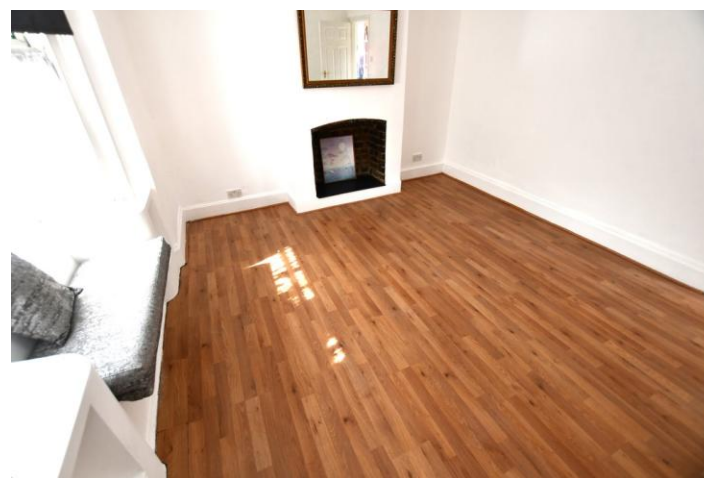
- Three double bedrooms
- Garden to the rear
- Spacious living room
- Spacious kitchen

## Richmond Road, Croydon, CR0 4SQ

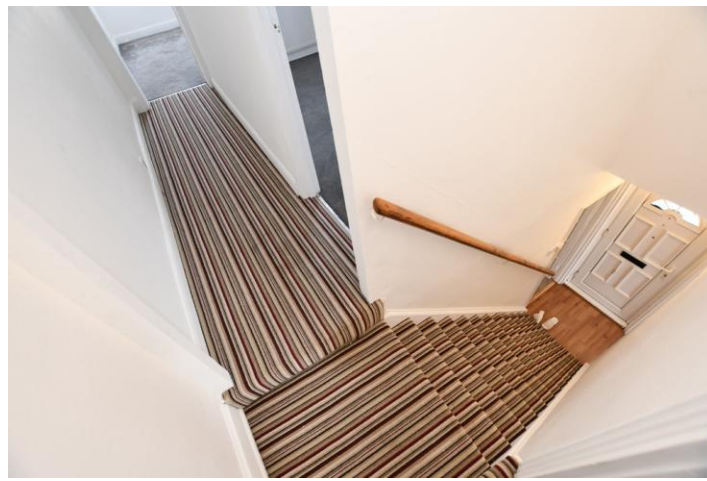
Spacious and must be seen! Lovely Three double bedroom family home situated in a popular location ideal for schools and amenities. The property has just has new carpets fitted throughout and a complete refresh of the decorating! There is a lovely secluded garden to the rear. Viewing is highly recommended and keys are held by us! Call now!  
EPC Rating D. Tax Band C.

**£2,400 pcm**

## Property Description







%epcGraph\_c\_1\_334%

49 Lower Addiscombe Road,  
Croydon, Surrey, CR0 6PQ

[www.bensonpartners.co.uk](http://www.bensonpartners.co.uk)  
[eastcroydon@bensonpartners.co.uk](mailto:eastcroydon@bensonpartners.co.uk)  
02086863335

Agents Note: Whilst every care has been taken to prepare these sales particulars, they are for guidance purposes only. All measurements are approximate are for general guidance purposes only and whilst every care has been taken to ensure their accuracy, they should not be relied upon and potential buyers are advised to recheck the measurements