

- POTENTIAL!
- Development site
- 5 x5 Detached Dwellings
- Clear of Restrictions
-

Dollywood Close, Buxworth, High Peak, SK23 7NX

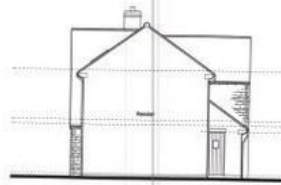
PLANNING PERMISSION GRANTED!! This site currently has permission for 5 x 5 Bedroom detached houses. The land is clear of all covenants and restrictions and ready to START IMMEDIATELY. Outline planning consent was granted by High Peak Borough Council (Planning Reference: Hpk/2016/0108) for the residential development of the site. The outline application reserved all matters for future consideration.

Offers In Region Of £350,000

Property Description



FRONT ELEVATION



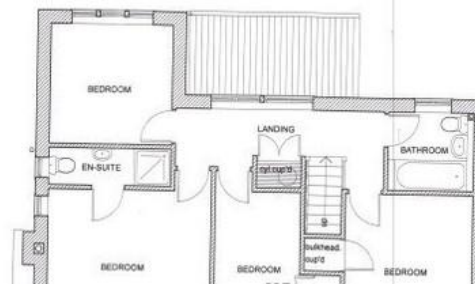
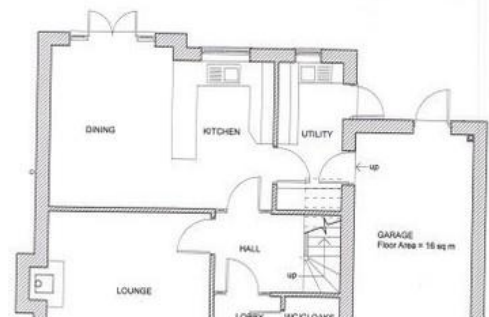
SIDE ELEVATION



REAR ELEVATION



SIDE ELEVATION



%epcGraph_c_1_334%

Benson & Partners Ltd
4 – 6 Station Road
London
SE25 5AJ

southnorwood@bensonpartners.co.uk
020 8653 3444

Agents Note: Whilst every care has been taken to prepare these sales particulars, they are for guidance purposes only. All measurements are approximate are for general guidance purposes only and whilst every care has been taken to ensure their accuracy, they should not be relied upon and potential buyers are advised to recheck the measurements.