



## WILLIS WAY

Purton, Swindon, SN5 4BD

## Willis Way, Purton, Swindon SN5 4BD

- AVAILABLE NOW
- First Floor Apartment
- Two DOUBLE Bedrooms
- Allocated Parking
- 19ft Lounge/Diner
- Kitchen
- Bathroom
- Built In Wardrobe & Storage Cupboards
- Sought After Location
- Council Tax Band B

**£1,000 PCM**



**\*\*\* AVAILABLE NOW \*\*\*** We are delighted to offer this spacious and well presented first floor two DOUBLE bedroom apartment offered unfurnished. The accommodation briefly comprises of entrance hallway (with storage cupboards), lounge/diner, kitchen, two bedrooms and bathroom. Property also benefits from allocated parking for one vehicle. Located in the popular village of Purton within walking distance to all its local amenities. An early viewing is highly recommended.

### **Location**

Purton is thriving village which lies about 3 miles north of the M4 from junction 16. The village is well served by a number of local shops and amenities with two convenience stores, an organic farm shop, a library, doctors, dentist, veterinary surgery as well as a number of independent shops, pubs and restaurants. The village has an excellent primary and secondary school. The larger town of Royal Wootton Bassett has further facilities and is just 5 miles away whilst the commercial centre of Swindon with its mainline train station is located about 6 miles away. The M4 provides convenient access to London, Bristol and Bath, whilst the village is also within easy reach of the A417/A419 to Cirencester and

Cheltenham and the M5 motorway.

### **Sizes**

Please note, all measurements of room sizes given are not guaranteed and figures are for guidance only.

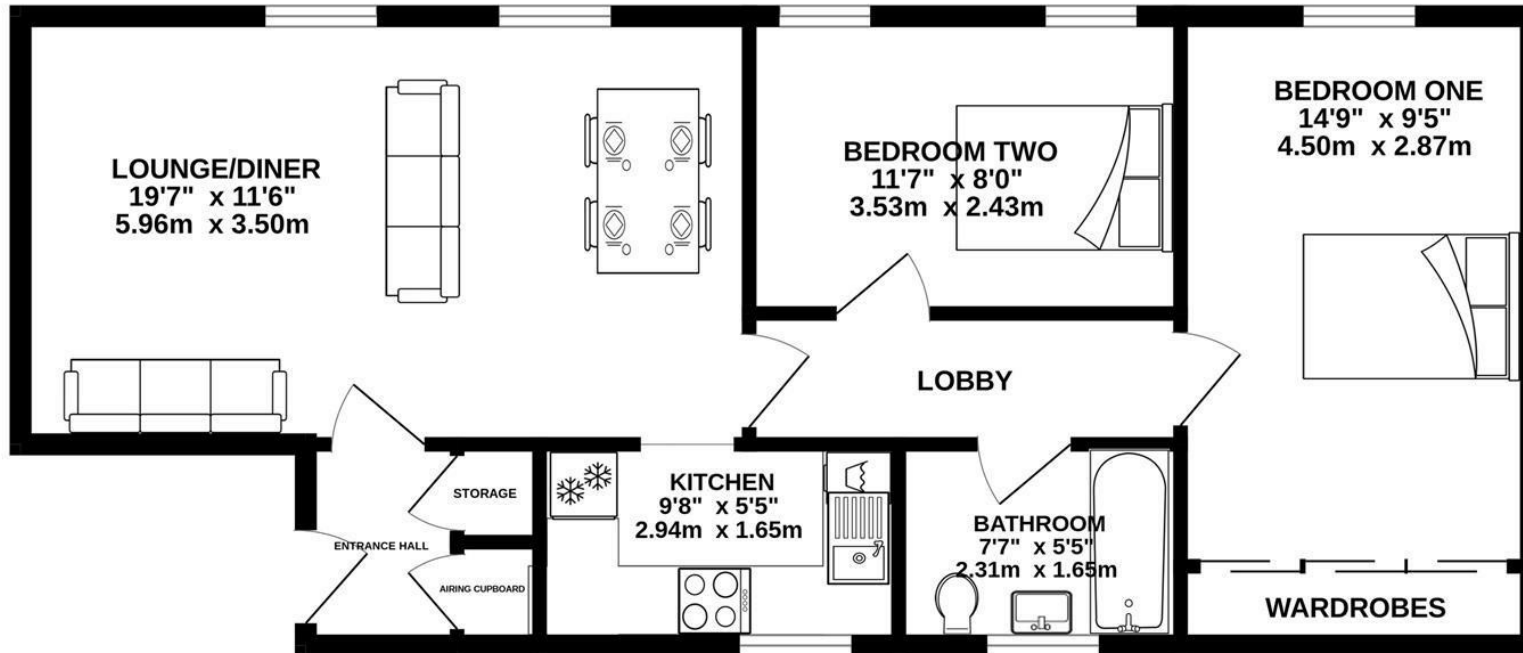
### **Viewings**

Strictly via our Swindon office telephone (01793) 641641.



# FIRST FLOOR

643 sq.ft. (59.8 sq.m.) approx.



TOTAL FLOOR AREA : 643 sq.ft. (59.8 sq.m.) approx.

Whilst every attempt has been made to ensure the accuracy of the floorplan contained here, measurements of doors, windows, rooms and any other items are approximate and no responsibility is taken for any error, omission or mis-statement. This plan is for illustrative purposes only and should be used as such by any prospective purchaser. The services, systems and appliances shown have not been tested and no guarantee as to their operability or efficiency can be given.  
Made with Metropix ©2026

01793 641641

101 Commercial Road, Swindon, SN1 5PL

info@primaryhomesandlettings.co.uk

**PRIMARY**  
HOMES & LETTINGS