



\*\*\* AVAILABLE NOW \*\*\* Primary Homes & Lettings are delighted to offer this well presented one bedroom ground floor maisonette. Located in the popular area of Westlea within easy access to local amenities, schools, West Swindon shopping centre and transport links such as the M4 motorway. The accommodation comprises of lounge/diner, kitchen, bedroom and bathroom. Property also benefits from allocated parking, patio area to the front, gas central heating and uPVC double glazing.



**£850 PCM**

**THORNFORD DRIVE**

Westlea, Swindon, Wilts SN5 7BB



AVAILABLE NOW

Ground Floor Maisonette

One Bedroom

Unfurnished/Part Furnished

Allocated Parking

Gas Central Heating

Patio Area To The Front

Lounge/Diner

Modern Bathroom

Kichen

### **Tenant Information**

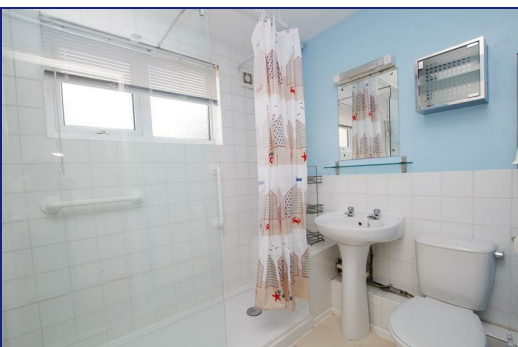
Length of Tenancy: Long term let with initial tenancy agreement of 6 months

Council: Swindon Borough Council

Tax Band: A

### **Viewings**

Strictly via our Swindon office telephone (01793) 641641.



**01793 641641**

10 Commercial Road, Swindon, SN1 5PL

**info@primaryhomesandlettings.co.uk**

