



## THE HEIGHTS

Old Town, Swindon, SN1 4NN



## The Heights, Old Town, Swindon SN1 4NN

- AVAILABLE NOW
- First Floor Maisonette
- One Bedroom
- Unfurnished
- Parking
- Lounge/Diner
- Kitchen
- Bathroom
- Good Location

**£775 PCM**



**\*\*\* AVAILABLE NOW \*\*\*** We are pleased to offer this first floor one bedroom maisonette offered unfurnished. The accommodation comprises of entrance hallway, lounge/diner, kitchen, bedroom and bathroom. Property also benefits from parking, communal garden and uPVC double glazing. Located in the popular area of Old Town, within easy access to Swindon town centre, train station, schools and transport links such as the M4 motorway.

#### **Entrance Hallway**

Storage cupboard. Airing cupboard.

#### **Lounge/Diner**

uPVC windows to front and side elevation. Storage heater.

#### **Kitchen**

uPVC window to side elevation. Matching wall and base units with rolled edge worktops over. Stainless steel sink and drainer with half bowl. Built in single oven. Electric hob with extractor hood over. Space and plumbing for washing machine. Space for fridge/freezer. Part tiled walls. Tiled flooring.

#### **Bedroom**

uPVC window to front elevation. Storage heater.

#### **Bathroom**

Obscured uPVC window to rear elevation. White suite comprising of panelled bath with electric shower over, pedestal wash hand basin and low level W.C. Part tiled walls. Vinyl flooring. Heated towel rail.

#### **Communal Area**

Communal garden. Bin store.

#### **Parking**

Allocated parking space.

#### **Tenant Information**

Length of Tenancy: Long term let with initial tenancy agreement of 6 months

Council: Swindon Borough Council

Tax Band: A

#### **Sizes**

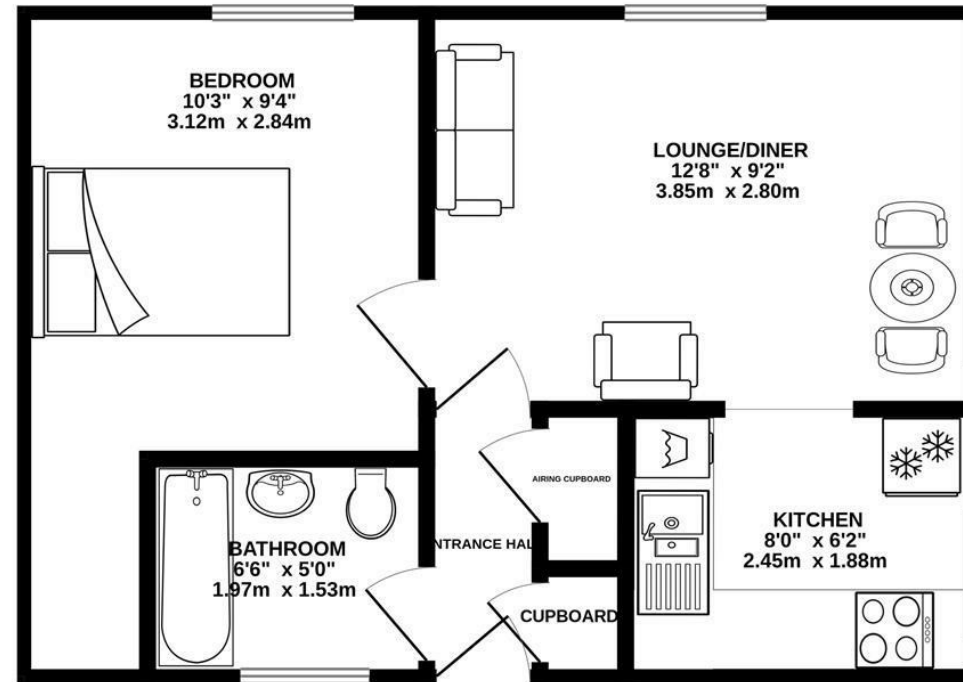
Please note, all measurements of room sizes given are not guaranteed and figures are for guidance only.

#### **Viewings**

Strictly via our Swindon office telephone (01793) 641641.



1ST FLOOR  
337 sq.ft. (31.3 sq.m.) approx.



TOTAL FLOOR AREA : 337 sq.ft. (31.3 sq.m.) approx.

Whilst every attempt has been made to ensure the accuracy of the floorplan contained here, measurements of doors, windows, rooms and any other items are approximate and no responsibility is taken for any error, omission or mis-statement. This plan is for illustrative purposes only and should be used as such by any prospective purchaser. The services, systems and appliances shown have not been tested and no guarantee as to their operability or efficiency can be given.  
Made with Metropix ©2025

**01793 641641**

10 Commercial Road, Swindon, SN1 5PL

**info@primaryhomesandlettings.co.uk**

**PRIMARY**  
HOMES & LETTINGS